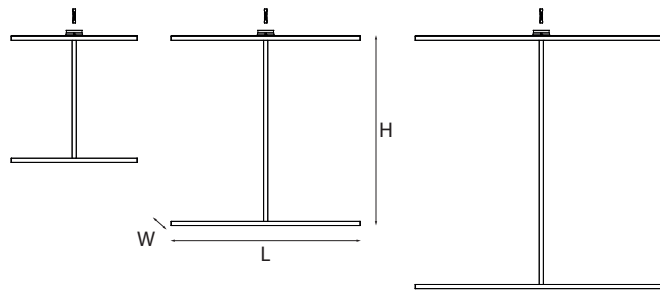
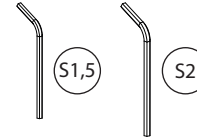


# kreon

## technics

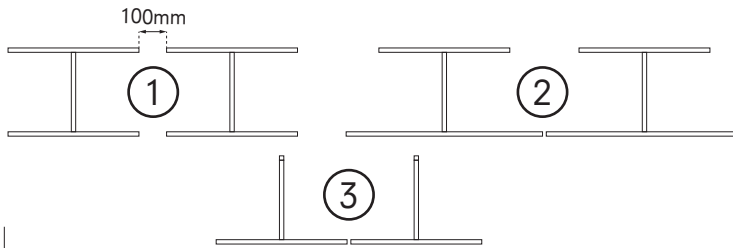


Name	Reference	drive current	wattage	AxB	C*	LxWxH
Fuga 600	KR974172-yy-xx	500mA	6,4W	102x102	270	600x20xYY
Fuga 900	KR974272-yy-xx	500mA	9,5W	102x102	420	900x20xYY
Fuga 1200	KR974372-yy-xx	500mA	12,7W	102x102		1200x20xYY

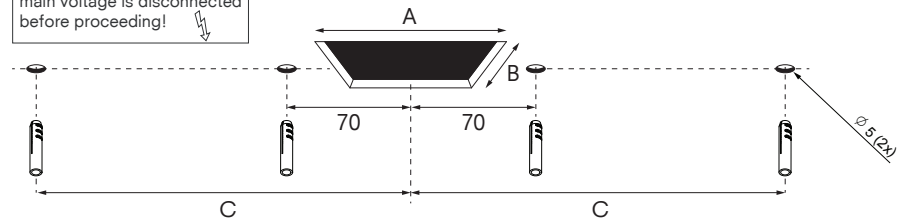


## 1 installation

BE AWARE: when multiple fuga fixtures are placed next to each other, make sure there is a minimum distance of 100mm between the ceiling profiles (1). you can also use ceiling profiles that are smaller than the LED (2), or install the ceiling profile perpendicular to the LED (3).

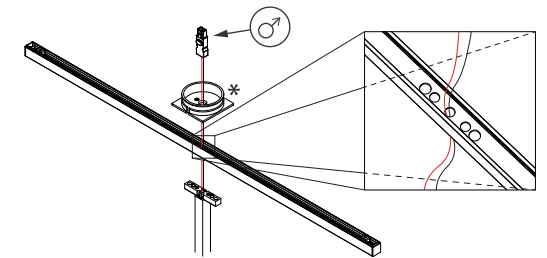
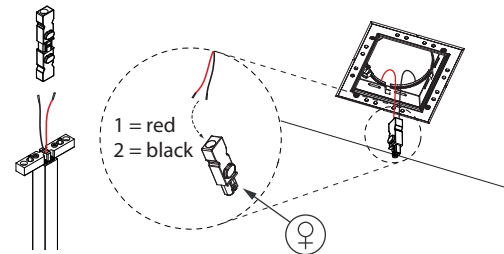
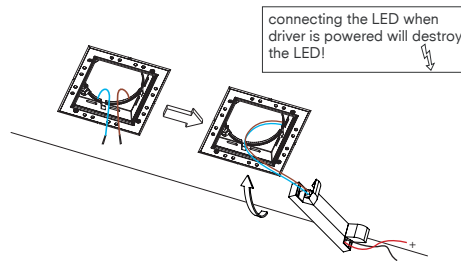


Please make sure that main voltage is disconnected before proceeding!



## 2 installation

cut a square hole for the plasterkit and four round holes for the plugs, check the correct measurements for each fuga on the table above, install the plugs before proceeding



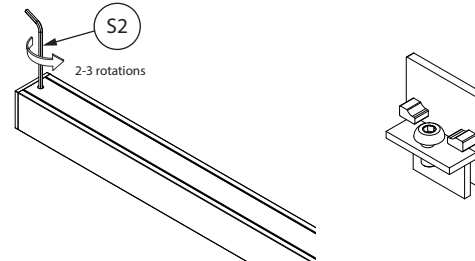
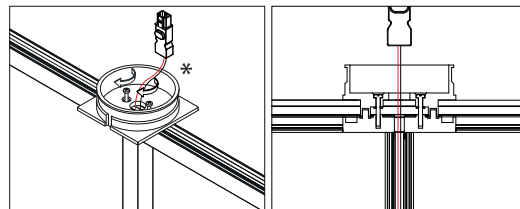
## 3 installation

to install the down in-line 80 plasterkit see manual KR8170001758 install the correct gear with strain relief on the hollow ceiling

disconnect the connectors from the vertical profile and make sure the cable stays inside, then connect the female connector to the driver

pull the LED cable through the ceiling profile and mounting plate, then attach the male connector back to the cable

\* kreon provides a black and white mounting plate, client can choose which he wants to install

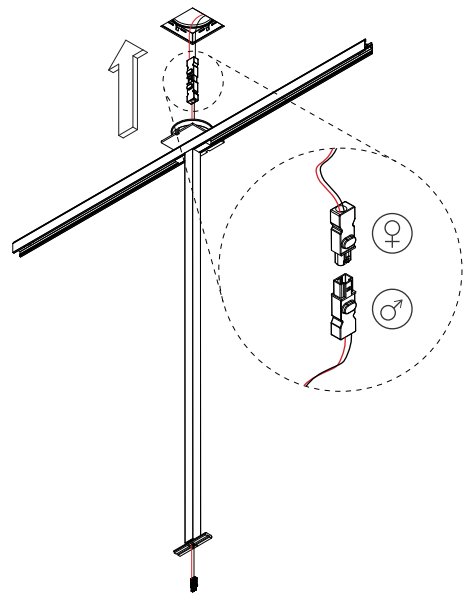


## 4 installation

assemble the parts together with the pre-mounted screws

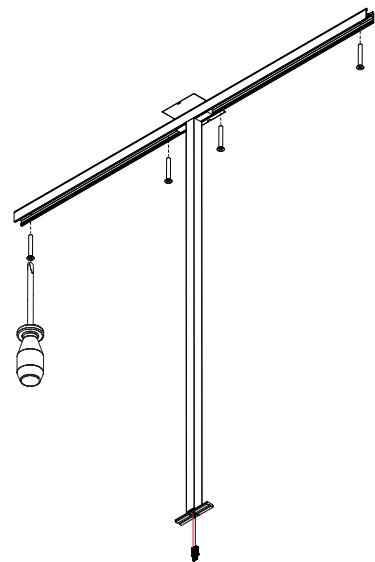
remove the end-caps by turning the hexagon key 2-3 times, keep the screw inside the end-cap for easier installment later

remove both cover profiles by sliding them out

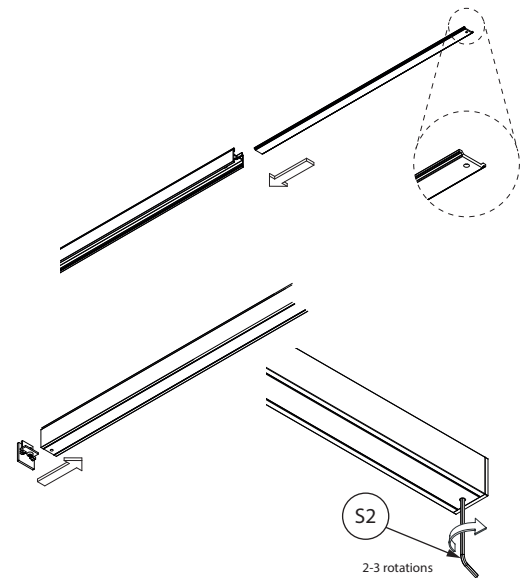


**5 installation**

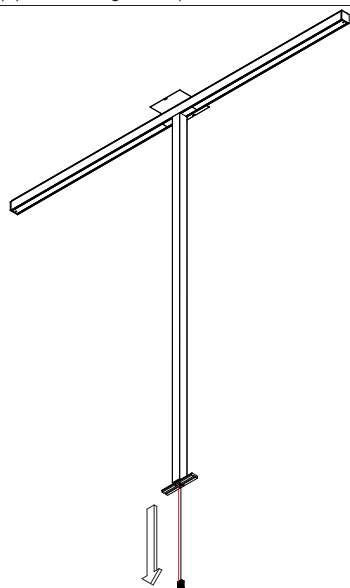
connect male and female connector to each other and push the top part of the fuga in the plasterkit



fixate the ceiling profile with four screws

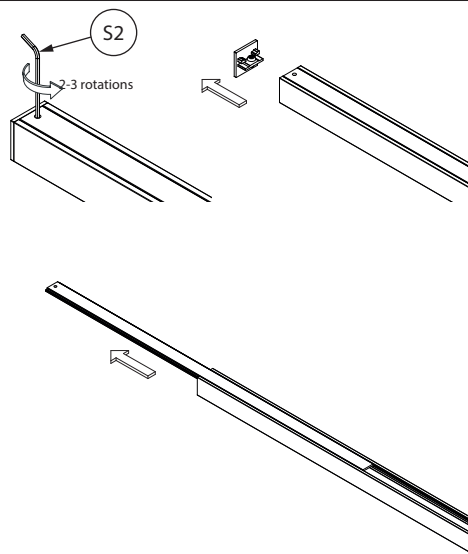


slide the covers back into place (make sure the hole is on the outside) then put the end-caps back and fixate them with the hexagon key

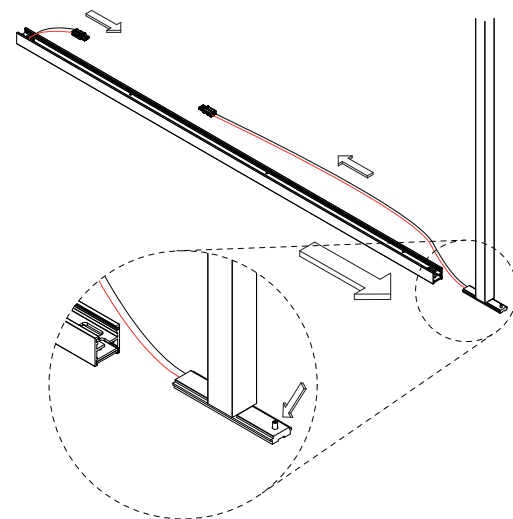


**6 installation**

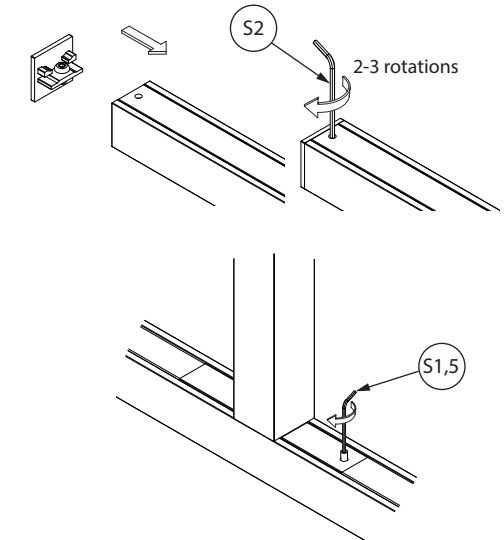
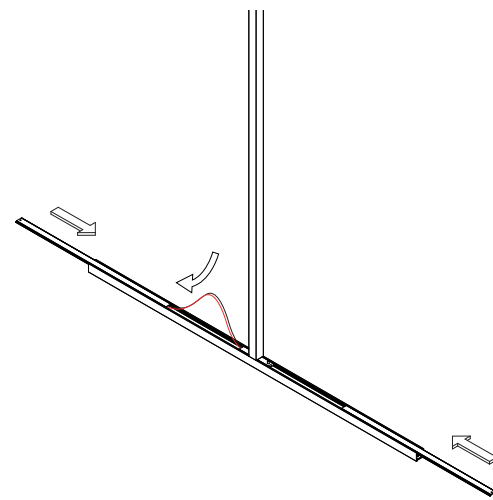
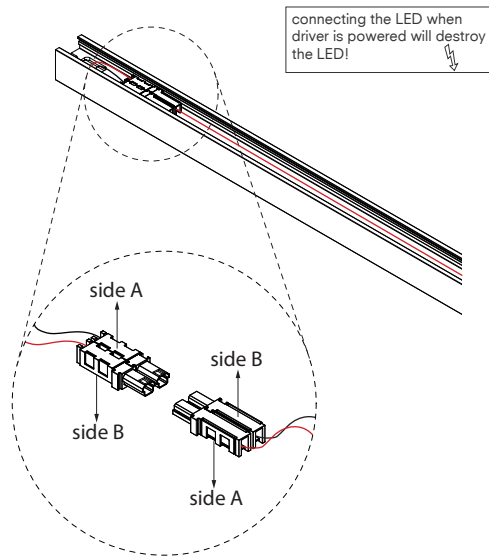
pull the cable for the LED down softly



remove both end-caps and covers from the LED-element



slide the LED-element on the vertical from the correct side! make sure the connectors are pointed towards each other and that the set screw is positioned on the other side!

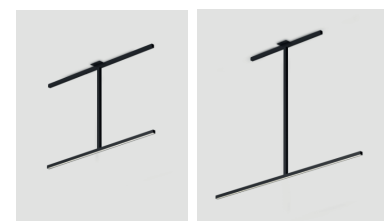
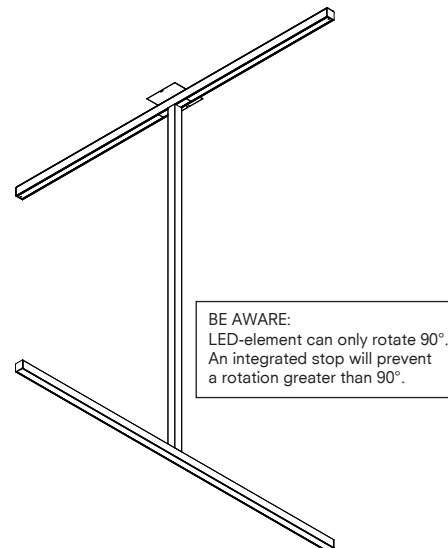
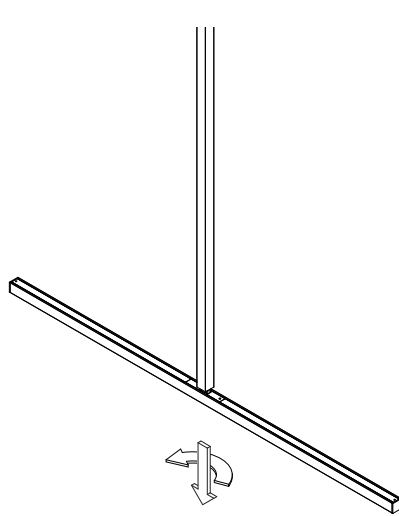


## 7 installation

connect the wire to wire connectors, make sure the colors match (red-red, black-black) and that they are sided opposite of each other

slide the covers back into place, the cable must be tucked under the cover. (if you want the fuga asymmetrical, go to page 4)

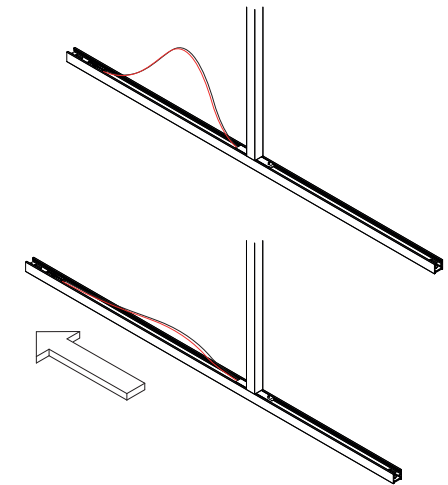
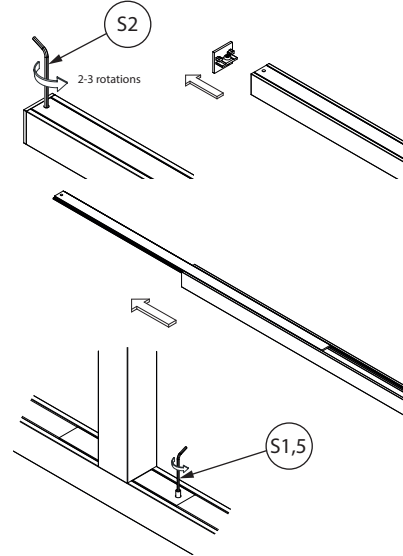
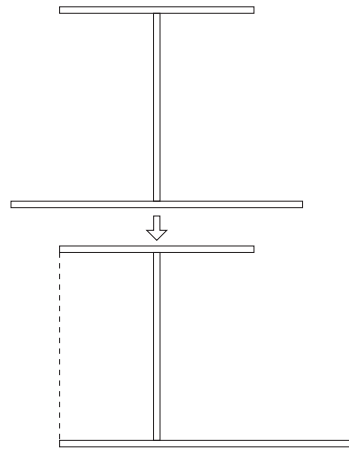
re-attach the end-caps and fixate the socket set screw inside the coupler mechanism



## 8 installation

the LED-element can be pulled down softly and rotated 90 degrees for a perpendicular set-up

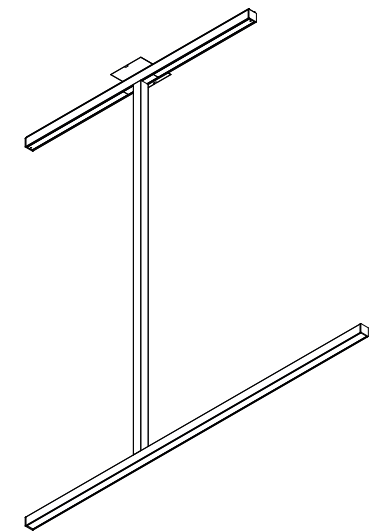
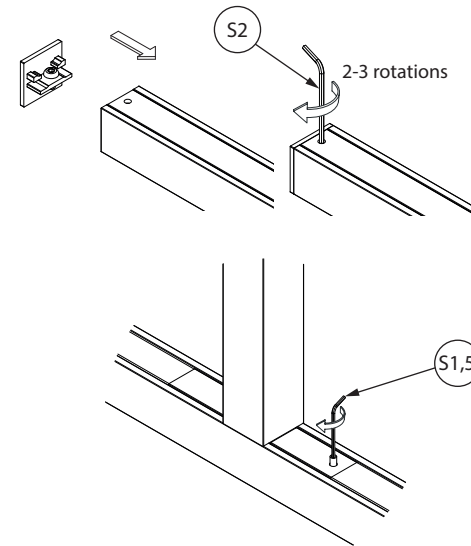
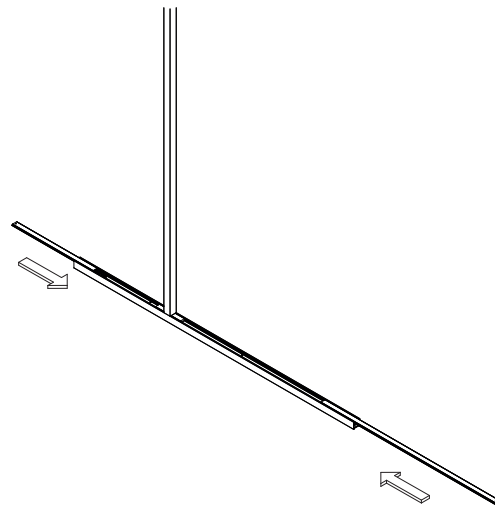
BE AWARE:  
fuga can only be placed asymmetrical if  
the ceiling profile is smaller than the LED



**9 accessoires**

to place the LED asymmetric to the vertical profile, first remove the end-caps and covers and unscrew the socket set screw in the coupler mechanism

slide the LED asymmetric. Make sure the vertical profile slides away from the connectors



**10 accessoires**

slide the asymmetrical covers into place

re-attach the end-caps and fixate the socket set screw inside the coupler mechanism