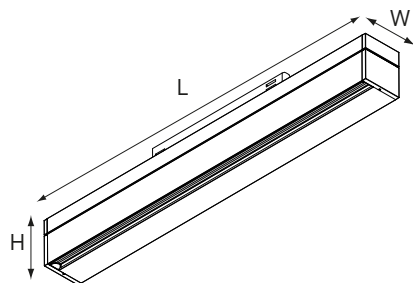


# kreon

## technics

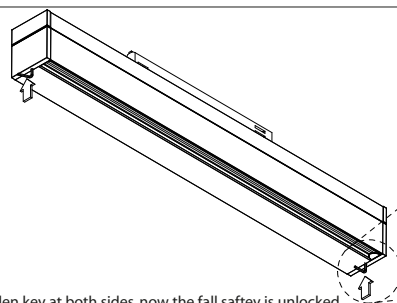


Name  
Rei on track

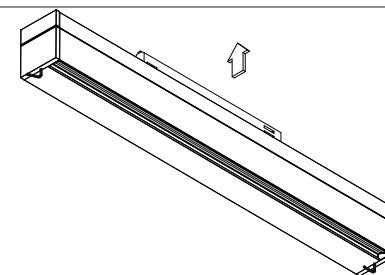
Reference  
KR98313x-xxxx-xx  
CRI 80 or 90  
colour temp  
27=2700K  
30=3000K  
SW  
VD  
DD

L x W x H  
600x58x70

## 1 dimensions



Push allen key  
until end.

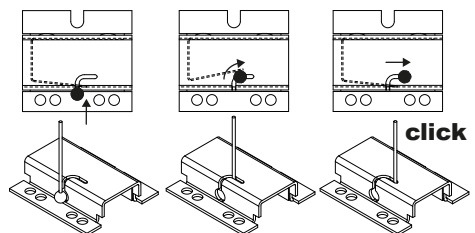
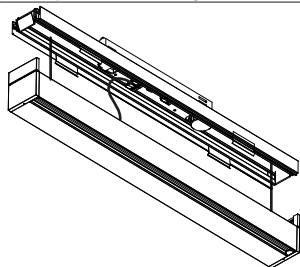


## 2 installation

Insert allen key at both sides, now the fall safety is unlocked.  
Caution: support the profile to avoid falling.

Keep both allen keys inserted during deinstallation.

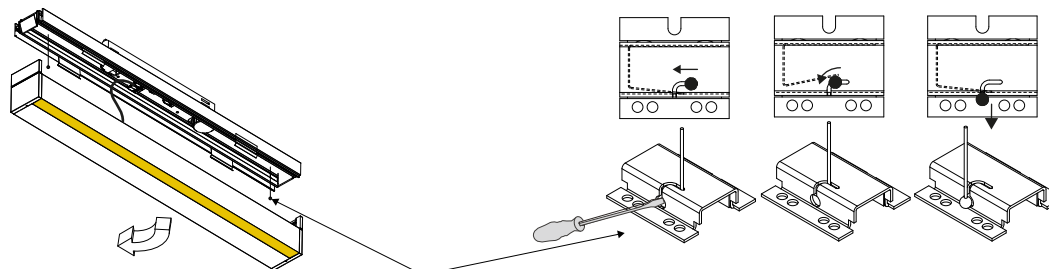
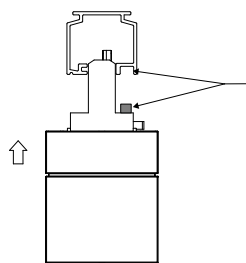
Pull at the upper extrusion to open  
the profile.



Please make sure that  
main voltage is disconnected  
before proceeding!

## 3 installation

In case fall safety is not locked, fix cable to bracket.

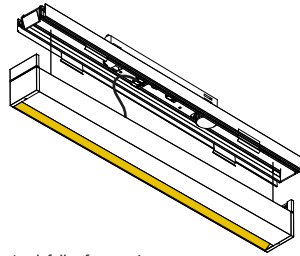


## 4 installation

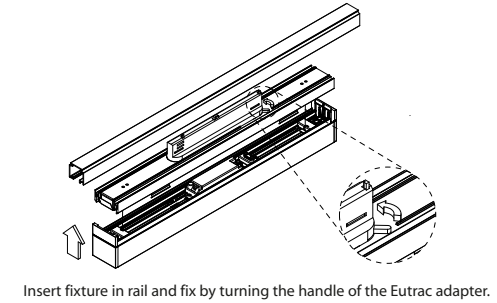
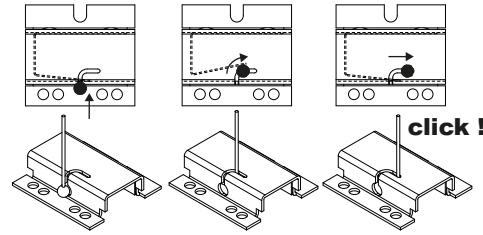
Choose correct orientation for luminaire.

In case the light output is at the wrong direction, unlock the fall safety, and  
turn the fixture 180°.

## 5 installation

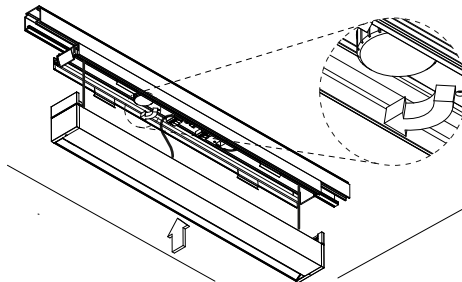


Lock fall safety again.

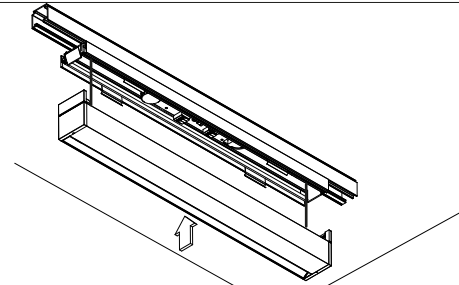


Insert fixture in rail and fix by turning the handle of the Eutrac adapter.

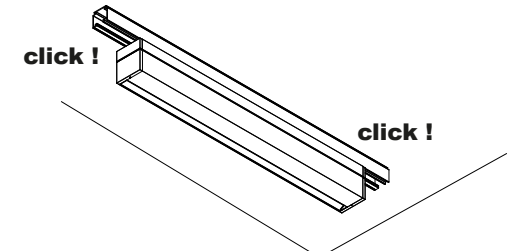
## 6 installation



Use correct circuit for the luminaire by turning the wheel on the adapter, for circuit 3 first pull and then turn the wheel.



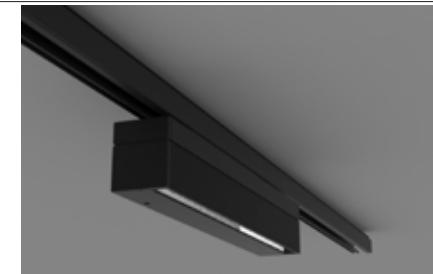
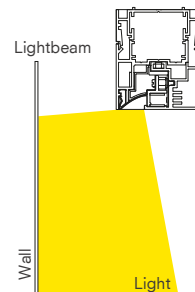
Close the profile.



To uninstall the fixture follow the steps from line 2 on sheet 1, turn the circuit wheel to 0 (line 6) unlock the eutrac adapter (line 5).

## 7 installation

in case of wallwasher



## 8 installation