

# ACANTIA A2

Design by: Studio Stile Masiero

# MASIERO



Telaio in metallo e fusione d'ottone  
Paralumi in tessuto damascato

Cast brass and metal frame  
Damask fabric lampshades

Metallstruktur mit Messingguss  
Lampenschirme aus Damast

Structure en métal et laiton moulé  
Abat-jours damassés


Металлический каркас и  
латунное литье  
Абажуры из ткани с камчатным  
узором

CE 

H 40 cm / 15.74"

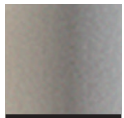
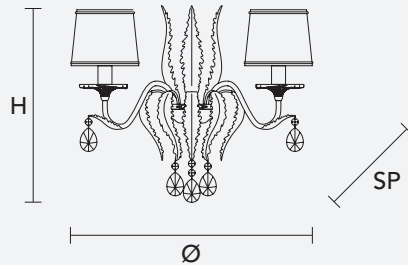
L 45 cm / 17.71"

SP 18 cm / 7.08"

 2×E14×40 W max

USA 2×E12×40 W max  
(not included)

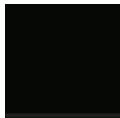
Paralumi/shade DAM/14/WH



WH-M



G03



BK-M