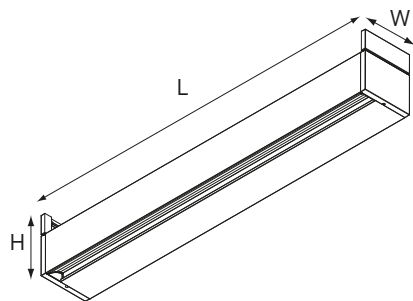


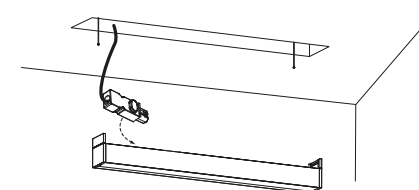
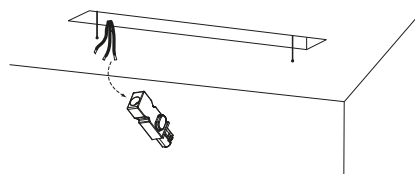
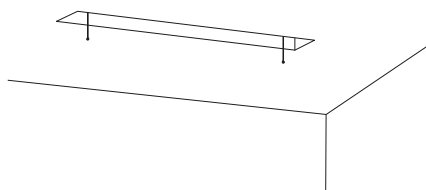
## technics



Name	Reference	L x W x H
Rei wallwasher recessed profile - on/off	KR98324x	Lx58x70
Rei wallwasher recessed profile - 1-10V	KR98384x	Lx58x70
Rei wallwasher recessed profile - dali (no touch dim)	KR98354x	Lx58x70
Rei downlight recessed profile - on/off	KR99324x	Lx58x70
Rei downlight recessed profile - 1-10V	KR99384x	Lx58x70
Rei downlight recessed profile - dali (no touch dim)	KR99354x	Lx58x70

## 1 dimensions

## 2 installation

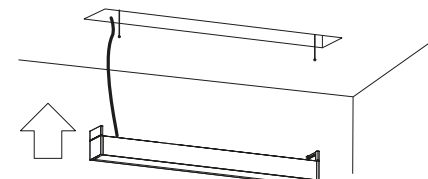
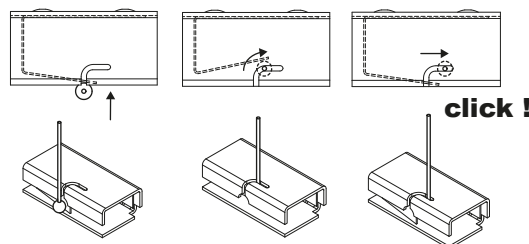
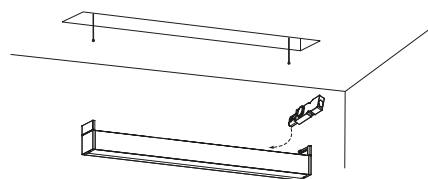


To install the plasterkit. See installation manual KR8830401868.

Connect female connector with strain relief to powersupply and dali dim.

Make correct connection with male connector in the luminaire.

## 3 installation

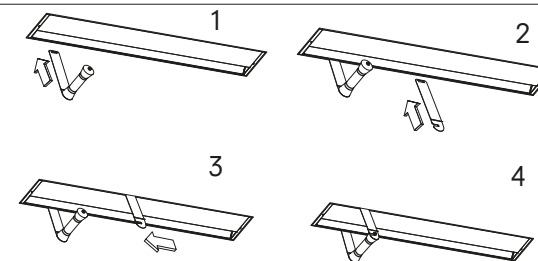
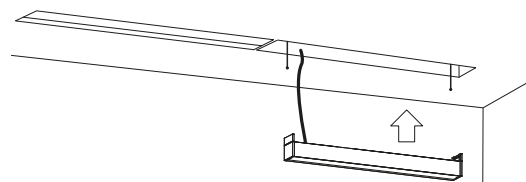
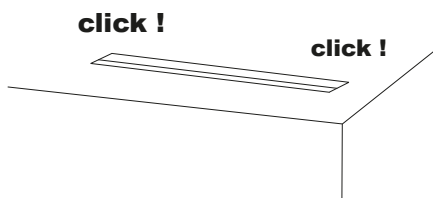


Close the unused connectors at the opposite side with the included female connectors.

Add cable to fall safety at both ends. When profile is >2,5m one extra fall safety in the middle.

Add inner profile

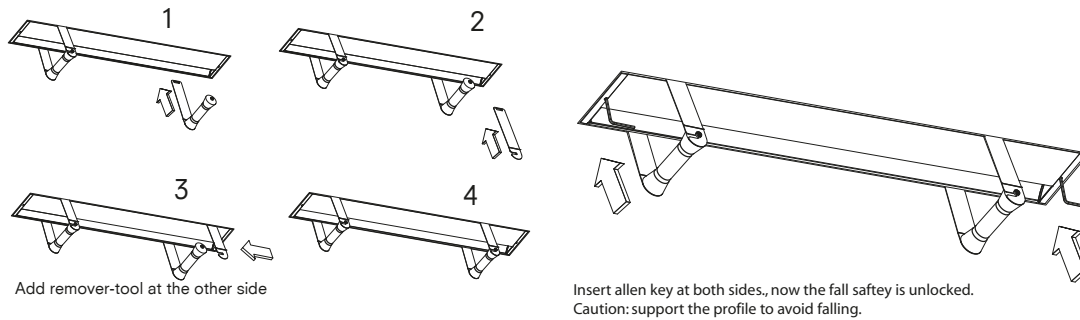
## 4 installation



In case of several pieces, repeat previous steps for all pieces. Caution: match the inner parts with the corresponding plasterkits!

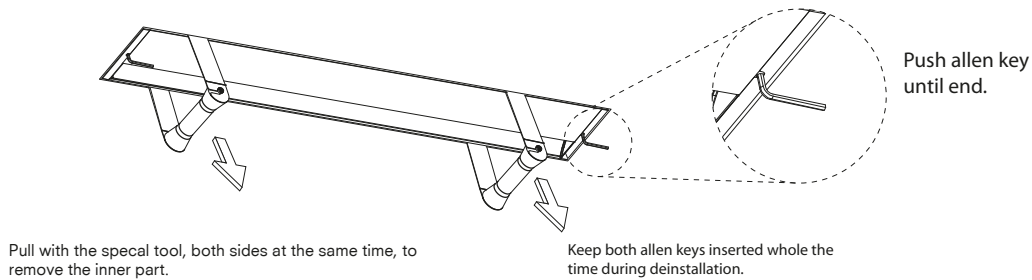
To remove the innerpart, add remover-tool at one side.

## 5 installation



When the fall safety is unlocked, support the profile to avoid falling.

## 6 installation

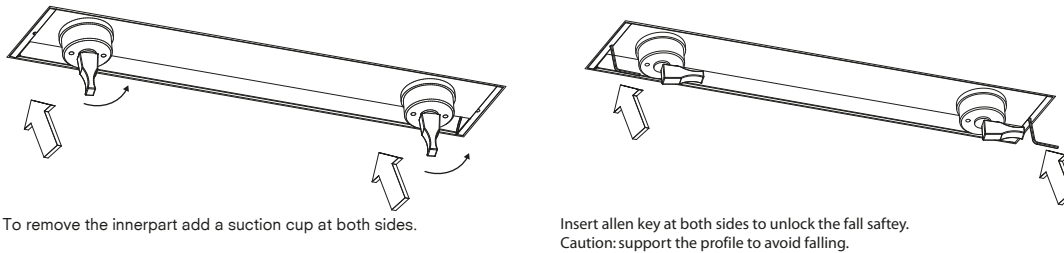


Pull with the special tool, both sides at the same time, to remove the inner part.

Keep both allen keys inserted whole the time during deinstallation.

## 7 installation

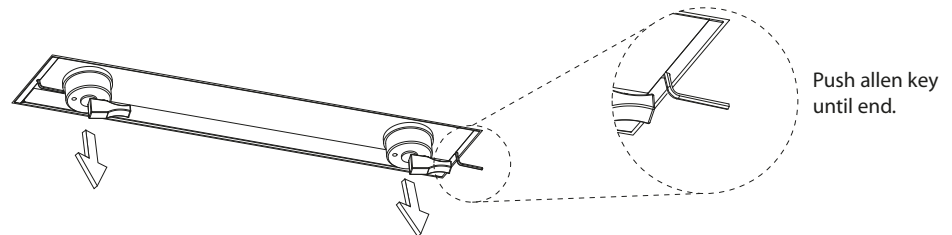
In case of suction cup KR783540



To remove the innerpart add a suction cup at both sides.

Insert allen key at both sides to unlock the fall safety. Caution: support the profile to avoid falling.

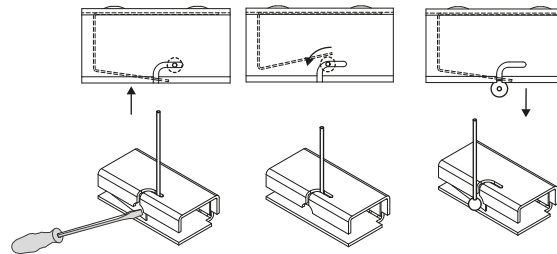
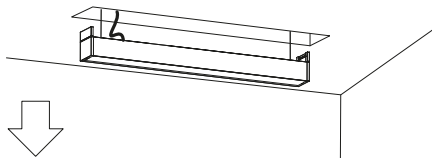
When the fall safety is unlocked, support the profile to avoid falling.



## 8 installation

Pull with on both suction cups simultaneously to remove the inner part horizontally out of the ceiling.

Keep both allen keys inserted whole the time during deinstallation.



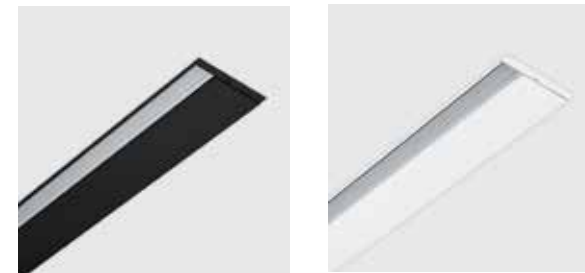
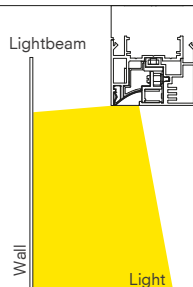
**6 installation**

Remove cable from fall safety at both ends. When profile is >2,5m one extra fall safety in the middle.

**7 installation**

**8 installation**

**in case of wallwasher**



**9 installation**

**kreon nv**

Industrieweg Noord 1152  
3660 Opglabbeek  
Belgium

Tel + 32 89 81 97 80  
Fax + 32 89 81 97 90

www.kreon.com  
mailbox@kreon.be

revision date: 17/01/2017 | Sheet 3/3  
KR8835401835