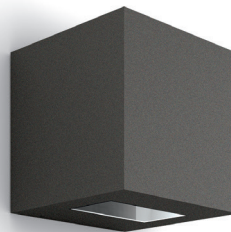
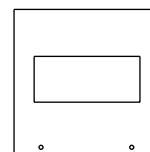


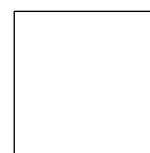
- Wall mounted LED projector for indoor and outdoor applications
- Aluminium body with surface protection treatment and subsequent polyester powder paint resistant to corrosion, atmospheric conditions and salt spray
- Polycarbonate diffusers
- Double and single light beam emission
- Power supply integrated in the product body
- Maximum permissible ambient temperature + 50 °C



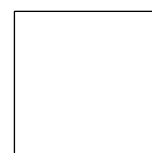
- *Proiettore LED a parete per interni ed esterni*
- *Corpo in alluminio con trattamento superficiale di protezione e successiva verniciatura in polvere di poliestere resistente agli agenti atmosferici, alla corrosione ed alle nebbie saline*
- *Diffusori in policarbonato*
- *Doppia e singola emissione del fascio di luce*
- *Alimentatore integrato nel corpo del prodotto*
- *Temperatura ambiente massima ammissibile +50 °C*



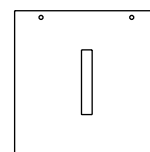
120



120



120

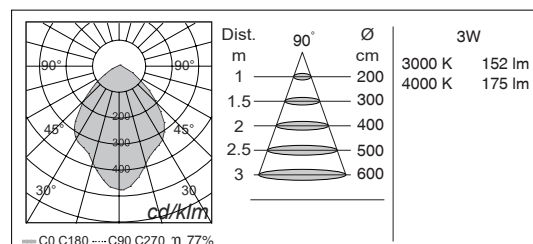
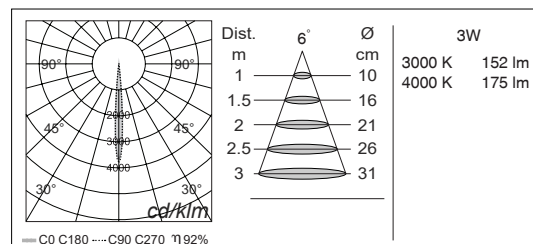
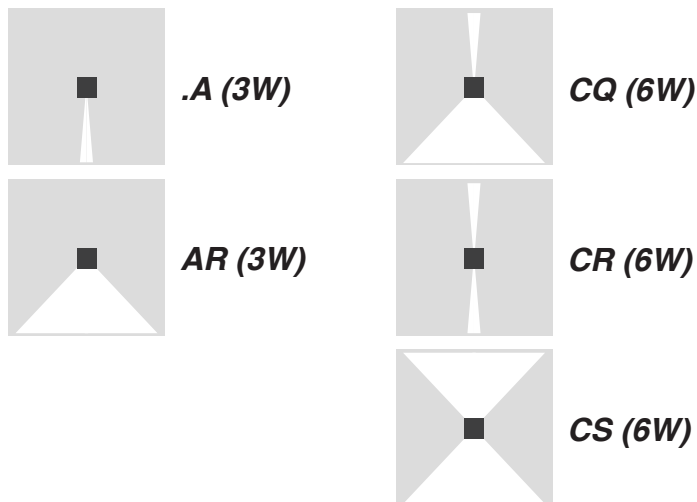


Lamp / Lampada	Input / Alimentazione	Power / Potenza	Color Tolerance/ Tolleranza Cromatica	CRI / CRI
1 / 2 PCB 1 LED CREE	220/240V 50/60Hz	3/ 6W	2-SDCM / 3-SDCM	80 MIN



NEXO LUCE (Factory)  
Strada Mirabella, 10  
46040 Cavriana (MN), ITALY  
T +39 0376 771513 F +39 0376 772235  
sales@nexoluce.com www.nexoluce.com

Made in Italy



MAIN CODE CODICE BASE	RELEASE EDIZIONE	LIGHT COLOR COLORE LUCE	WATT WATT	OPTIC OTTICA	CONTROL CONTROLLO	FRAME COLOR COLORE
6565	.1	B 3000K	.03 3W	.A 6°	1 ON/OFF	.C DARK GREY / ANTRACITE
		C 4000K	.06 6W	AR 90°		
		* others on request / altri su richiesta		CQ 6° - 90°		
				CR 6° - 6°		
				CS 90° - 90°		

CODE EXAMPLE : Projector with warm white light color at 3000K, 3W, 6° optic, ON/OFF control, dark grey color  
6565.1B.03.A1.C

ESEMPIO DI CODIFICA : Proiettore con luce calda a 3000K, 3W, ottica 6°, controllo ON/OFF, colore antracite  
6565.1B.03.A1.C

NEXO LUCE (Factory)  
Strada Mirabella, 10  
46040 Cavriana (MN), ITALY  
T +39 0376 771513 F +39 0376 772235  
sales@nexoluce.com www.nexoluce.com

Made in Italy