

PALM A

Design by: mammini . candido

MASIERO



Struttura in metallo verniciato, rivestimento in diverse finiture, illuminazione LED.

Painted metal frame, different finishes cover, LED lighting.

Struktur aus lackiertem Metall, in verschiedenen Ausführungen erhältlich, LED-Leuchtsystem.

Structure en metal verni, différentes finitions disponibles, éclairage LED.

Окрашенный металлический каркас, подвесы с различной отделкой, светодиодное освещение.



H 34 cm / 13.38"

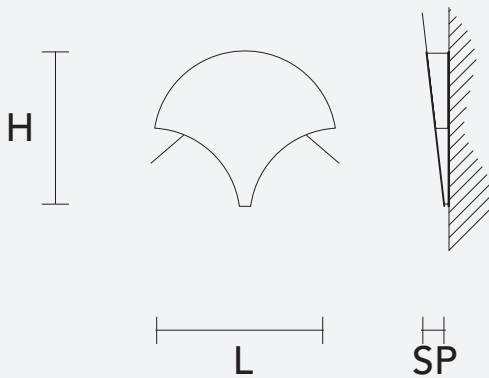
L 40 cm / 15.74"

SP 5 cm / 1.96"

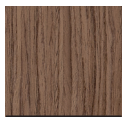
LED x 13 W CRI>80

3000 K - 770 lm

Not dimmable



W04



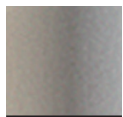
W05



W06



W07



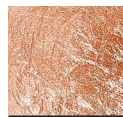
WH-M



F01



F02



F-03