

Products / Low Tables / Frame Aluminium Table 160x100x32

# Frame aluminium table 160x100x32

by Ramón Esteve

Frame, outdoor collection by Ramon Esteve, comes from generating serene and timeless shapes using the framework as elementary geometry. The endless possibilities offered by the material using advanced technology, was the motivation to explore the limits.



# Info

---

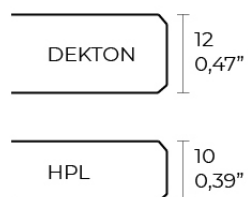
## Description

Extruded aluminum with cast lacquered aluminum base. HPL Table top ó Dekton Table top. Item suitable for indoor and outdoor use. HPL Table top.

Weight: 30.91 Kg



FRAME Mesa Baja Aluminio 100 x 160 cm  
FRAME Low Table Aluminium Base 39 1/4" x 63"



# Finishes

---

## finishes

---

### LACQUERED

Ref. 54246F



white



black



ecru

Lacquered aluminium profile.

### LACQUERED + SOLID CORE

Ref. 54246FB



white

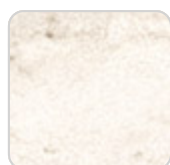
Lacquered aluminium profile.

### LACQUERED + DEKTON

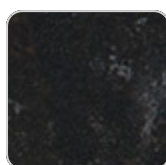
Ref. 54246FM



entzo



danae



kelya

Lacquered aluminium profile.

# Ambients

---

