

Products / Planters / Suave Planter ø55x100 Cm

# Suave planter ø55x100 cm

by Marcel Wanders

Suave in&out furniture collection, designed by Marcel Wanders for Vondom, blends the boundaries between indoor and outdoor furniture and achieves a higher level of softness, comfort and relaxation.



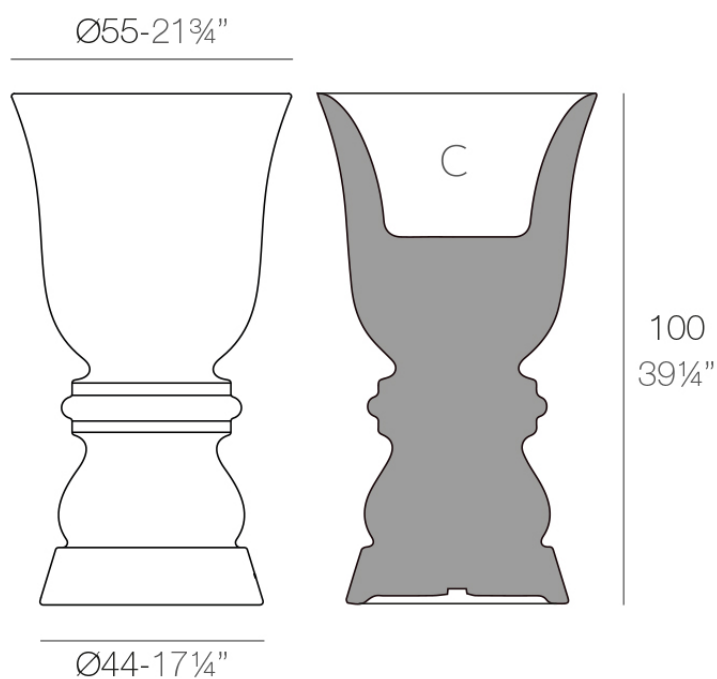
# Info

---

## Description

Pot made of polyethylene resin by rotational moulding. 100% Recyclable. Item suitable for indoor and outdoor use. Available in different finishes.

Weight: 10.7 Kg



SUAVE Macetero 100 cm  
SUAVE Planter 39 1/4"

C = 82 L  
C = 21 3/4 gal

# Finishes

---

## finishes

---

### BASIC

Ref. 67012A



crema



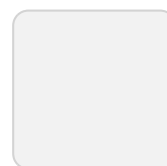
green



purjai red



orange



ice



notte blue



white



black



bronze



steel



anthracite



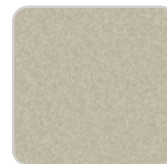
red



khaki



taupe



ecru

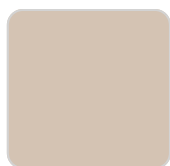


beige

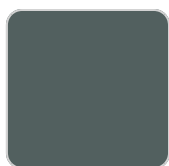
### Matt Polyethylene

### SELF-WATERING

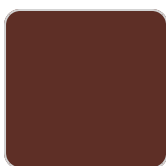
Ref. 67012R



crema



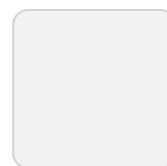
green



purjai red



orange



ice



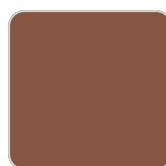
notte blue



white



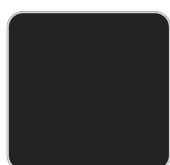
black



bronze



steel



anthracite



red



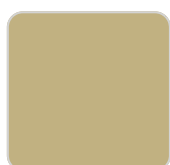
khaki



taupe



ecru



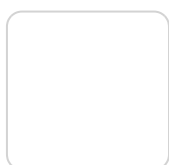
beige

Self-watering system included in all planters except those with basic finish

## LACQUERED Ref. 67012RF



purjai red



white



black



bronze



steel



anthracite



red



khaki



taupe



ecru



beige

modo green

champany

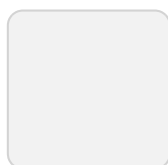
Lacquered Polyethylene

## lighting

---

### LIGHT

Ref. 67012W

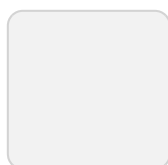


ice

White internally lit unit with LED technology. Available only in matte ice white finish.

### RGBW LED

Ref. 67012L

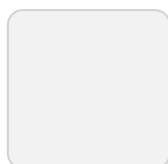


ice

Unit with internal lighting with RGBW LED technology and remote control unit for switching colors. Available only in matte ice white finish. Remote control included.

### RGBW LED BATTERY

Ref. 67012Y

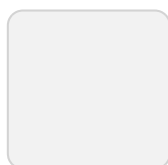


ice

Unit with internal lighting with battery-powered RGBW LED technology. Includes charger and remote control for switching colors and charger. Available only in matte ice white finish.

## RGBW LED DMX BATTERY

Ref. 67012DY



ice

Unit with internal lighting with RGBW LED technology and remote control unit for switching colors. Also controlled by DMX-1024 (wireless), enabling communication between one or more products simultaneously via the DMX transmitter (not included). There are two options to choose from: Professional XLR DMX and Home WIFI DMX. (Remote control included).

# Ambients

---

