

Products / Dining Tables / Mari-sol 3-legged Double Table Base

Mari-sol 3-legged double table base

by Eugeni Quitllet

Mari-sol Collection, designed by Eugeni Quitllet for Vondom, is composed by a design table that **combines technology in its function with sensuality** in its shape. The answer for adorning terraces around the world.



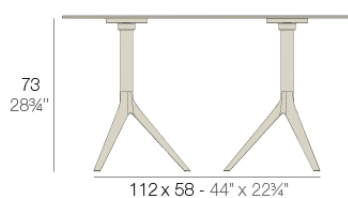
Info

Description

Extruded aluminum tube with cast aluminum base coated with epoxy baked painting. Item suitable for indoor and outdoor use. Table top not included.

Weight: 6.88 Kg

BASE 3 LEGS - BASE 3 PATAS



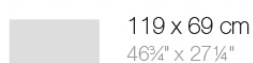
fixed top / fijo *ref.65031*

collapsible top / abatible *ref.65031T*

MARI-SOL BASE DOBLE 112x58 H73

MARI-SOL DOUBLE BASE 44x22 3/4" H28 3/4"

TABLE TOPS OPTIONS - OPCIONES SOBRES



Finishes

finishes

Fixed

Ref. 65031



red



british gray



pickle



ecru



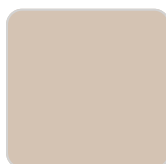
almond



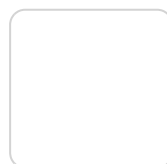
traffic gray



black



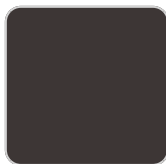
crema



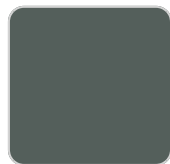
white



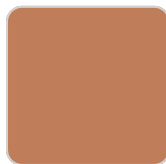
castoro fiber



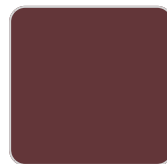
bronze



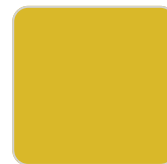
modo green



melon



purjai red



mostaza

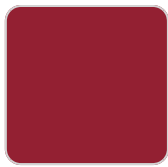


notte blue

Powder coated aluminum base with non collapsable attachment made of polyamide and fiber glass

COLLAPSIBLE TOP

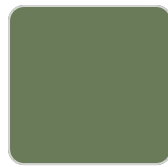
Ref. 65031T



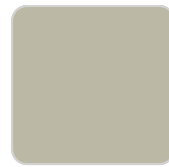
red



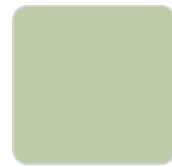
british gray



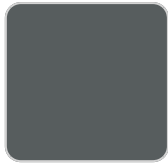
pickle



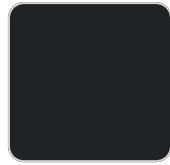
ecru



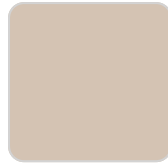
almond



traffic gray



black



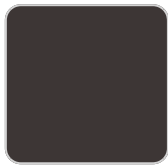
crema



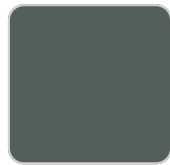
white



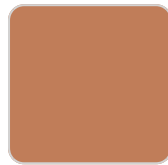
castoro fiber



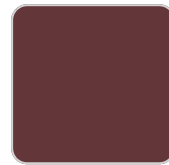
bronze



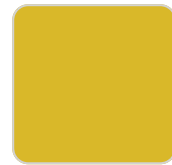
modo green



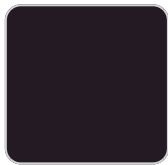
melon



purjai red



mostaza



notte blue

Powder coated aluminum base with 90° collapsable attachment made of polyamide and fiber glass

tabletops

HPL - BLACK

Ref. 66031



white



black



ecru

HPL black edge

