

MORFEMA suspension

Laura Alesi and Silvia Braconi design

ООО "Мастерская светотехники
8 800 100 39 72
8 495 727 14 91
9725087@masv.ru
http://masv.ru

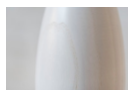
year 2016

SE126 1B INT

TECHNICAL SHEET

STRUCTURE "A"

material turned wood
colour white



CEILING CUP "E"

material metal
colour gold

ELECTRICAL CABLE "C"

material cotton
colour green thyme
natural linen

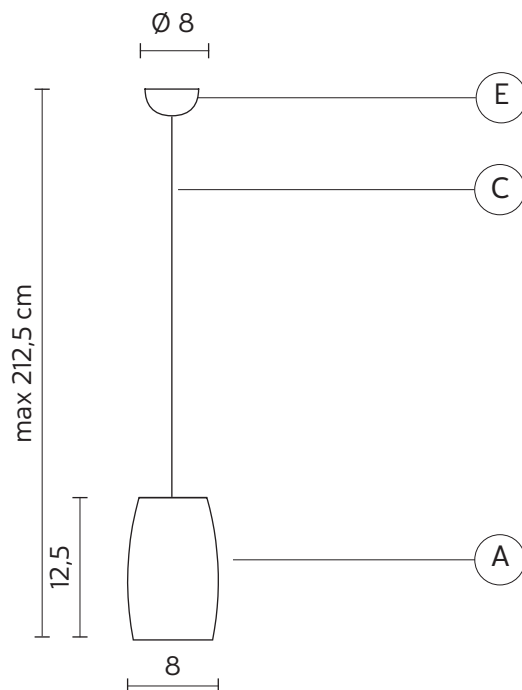


ELECTRICAL SYSTEM

socket GU10
source max 1x 20w
energy class from E to A++

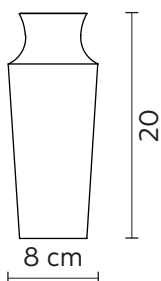
PACKAGING

n° colli 1
net weight/kg 0,7
imballo/cm 22x29x9



AC126 2B INT

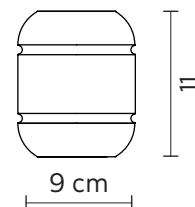
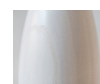
material wood
colour white



net weight/Kg 0,6

AC126 3B INT

material wood
colour white



net weight/Kg 0,33

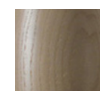
AC126 2V INT

material wood
colour green



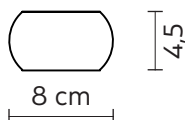
AC126 3V INT

material wood
colour green



AC126 4B INT

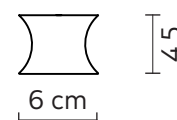
material wood
colour white



net weight/Kg 0,15

AC126 5B INT

material wood
colour white



net weight/Kg 0,05

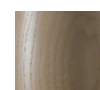
AC126 4V INT

material wood
colour green



AC126 5V INT

material wood
colour green



AC126 4M INT

material wood
colour mahogany



AC126 5M INT

material wood
colour mahogany

