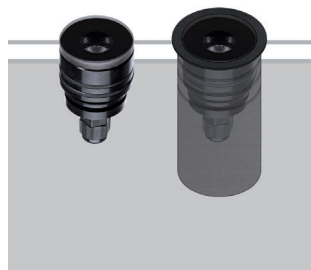


GLASS 2

Uplights

design Roberto Mantovani



A walkable IP67 for ground recessing of the highest build quality and with a glass front. Extremely small dimensions combine with elevated luminous fluxes. With a body in thick anodised aluminium, it has tempered extra-clear glass, an ATEX cable gland and neoprene cable. Can be fitted with an anti-glare filter for maximum visual comfort.

Incassi a terra IP67 calpestabili di altissima qualità costruttiva, con frontale in vetro. Dimensioni estremamente contenute ed elevati flussi luminosi. Corpo in alluminio anodizzato a spessore, vetro extrachiaro temprato, pressacavo ATEX, cavo in neoprene. Equipaggiabili con filtro antiabbagliamento per il massimo comfort visivo.

Spots à encastrer au sol IP67 de très haute qualité de construction, avec façade en verre. Dimensions extrêmement limitées et à flux lumineux élevés. Corps en aluminium anodisé épais, verre extra-clair trempé, presse-étoupe ATEX, câble en néoprène. Peut être équipé de filtre anti-éblouissement pour le plus grand confort visuel.

IP67 begehbare Bodeneinbauleuchten von sehr hoher Bauqualität, mit Glasfront. Extrem kleine Abmessungen und hohe Lichtströme. Dickes, eloxiertes Aluminiumgehäuse, gehärtetes, extraklares Glas, ATEX-Kabelverschraubung, Neoprenkabel. Kann mit Blendschutzfilter für maximalen Sehkomfort ausgestattet werden.

IP67 made in Italy

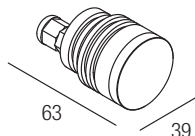


Supply current
350-500 mA (V, 2,9V)

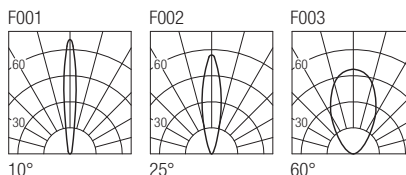
Power
1-2 W

Series wiring

Dimensions



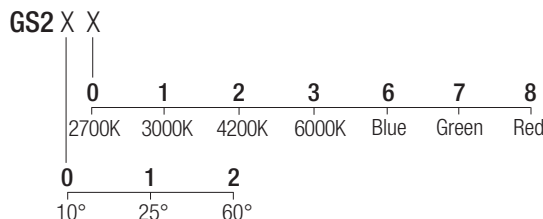
Photometric diagrams



CCT/CRI/Flux

	350mA	500mA
2700K	89lm	128lm
3000K	93lm	133lm
4200K	103lm	154lm
6000K	114lm	165lm

Code construction

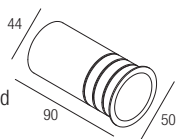


Note: cable cut to measure on request

Optionals

CSGS01
Recessing box with trim

Note: recessing box needed for installation



LGS201
Low luminance louver

Note: the filter must be ordered together with the lighting fixture



Drivers

