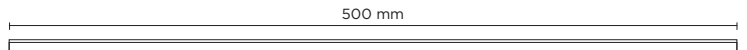
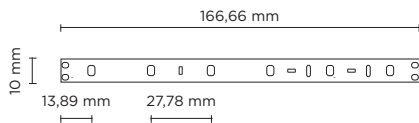
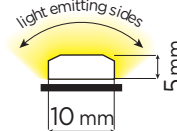





402101-402102

## HYDROCOVE 5000

Cove light 5.000 mm length, 5 mm x 10 mm section, fully encapsulated flexible LED strip for linear lighting outdoor and indoor; LED circuit completely encapsulated with UV and high-resistant polyurethane sheath, with transparent finish, homogeneous light emission. LED brand Nichia 757. 24V DC remote driver needed. IP68 rated.



402101	HYDROCOVE X36 5000		
light source*	light beam options	lumen output (lm)	lumin. efficacy (lm/w)
<b>3000°K warm-white</b>			
low power led	 diffused	510/meter	56.66

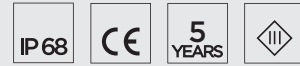
### Finish color options:

Transparent

### remote driver selection

brand	manufacturer code	type	watt	IP rate	numbers of fixtures
Meanwell	LPV-60-24	constant voltage 24V DC	60W	IP67	1

### Technical features

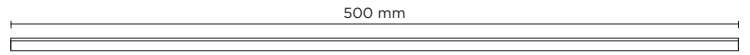
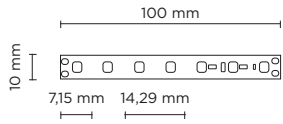


### Technical data

Material	High performances Polyurethane, UV resistant, saltwater resistant
	No yellowish after years
Light source	LED brand Nichia 757
Transformer	24V DC remote driver needed
	Supplied with Male/Female connectors for in-line installation

### Technical data

Wattage	9 WATT
IP Rating	IP68
	Cutttable every 166.66 mm
Light source	Nr. 36 LED per meter



**402102** **HYDROCOVE X70 5000**

light source	light beam options	lumen output (lm)	lumin. efficacy (lm/w)
<b>3000°K warm-white</b>			
low power led	diffused	1.500/meter	83.33

**Technical data**

Wattage	18 WATT
IP Rating	IP68
	Cutttable every 100 mm
Light source	Nr. 70 LED per meter

**Finish color options:**

Transparent

**remote driver selection**

brand	manufacturer code	type	watt	IP rate	numbers of fixtures
Meanwell	LPV-100-24	constant voltage 24V DC	100W	IP67	1

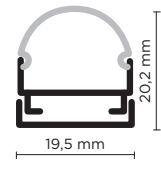
**AC039** **ALUMINUM LINEAR PROFILE FOR HYDROCOVE RANGE**

1.000 mm Linear profile for Hydrocove, realized in anodized aluminum, to secure with screws. Ideal for straight installation on a wall or ceiling.



**AC040** **ROUND COVER - DIFFUSER**

Round shape opal diffuser in polycarbonate, to be used with aluminum profile.



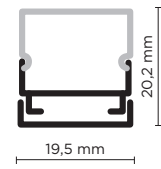
**AC041** **ROUND END CAP**

Plastic end cap to close aluminum profile + round diffuser.



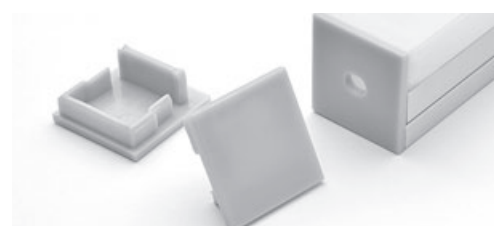
**AC042** **SQUARE COVER - DIFFUSER**

Square shape opal diffuser in polycarbonate, to be used with aluminum profile.



**AC043** **SQUARE END CAP**

Plastic end cap to close aluminum profile + square diffuser.



**AC054** **LEADER CABLE FOR HYDROCOVE RANGE**

Initial cable to connect the driver to first luminaire of an in-line installation of multiple luminaires, all connected to one driver. Kit contains two leader cables, one with male connector and one with female connector, to allow start the installation from both sides.

