

NUARÉ PL6

Design by: Studio Stile Masiero

MASIERO



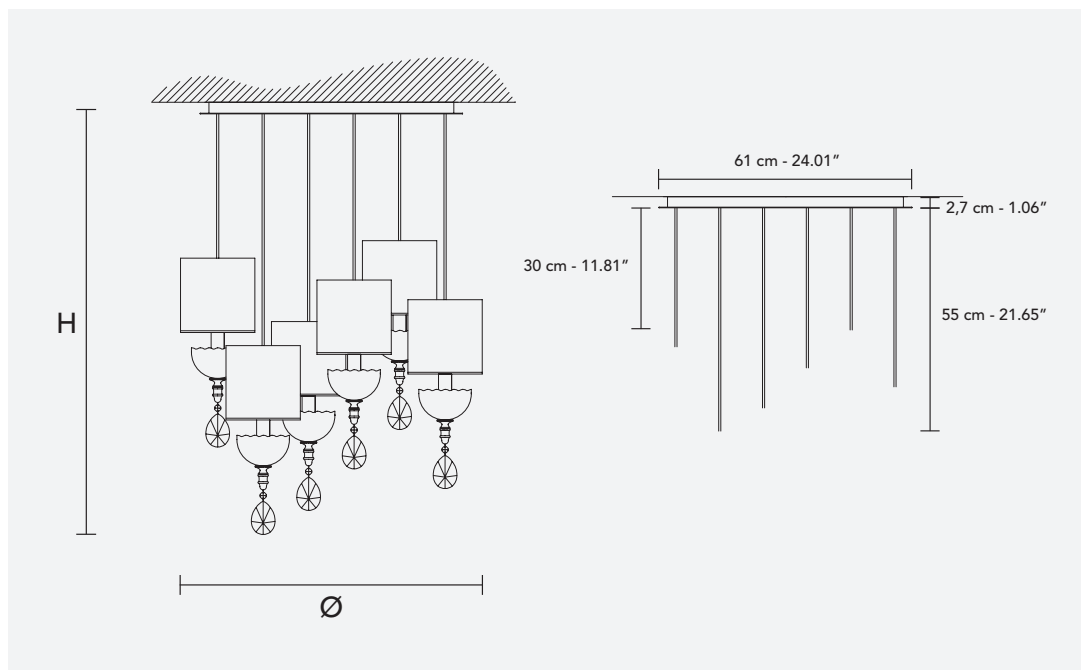
Struttura in metallo e fusione d'ottone.
Bobeges e sfera centrale in borosilicato fumè, paralumi in raso Silver Night.
Pendagli in cristallo fumè.

Metal and cast-brass frame.
Smoky borosilicate bobèches and central sphere, satin shades col. Silver Night.
Smoky crystal pendants

Struktur aus Metall und Messingguss.
Borosilikat-Schalen und Kugel in der Farbe Fumé, Lampenschirme aus Satin in der Farbe Silver Night.
Fumé Kristall-Behang.

Structure en métal et fusion de laiton.
Bobèches et boule en borosilicate fumé, abat-jours en satin col. Silver Night.
Pendentifs de cristal fumé.

Металлический каркас и латунное литье.
Чаша и центральная сфера боросиликатного дымчатого стекла, абажуры из сатины в цвете Silver Night.
Подвесы из цветного хрустала.

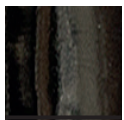


CE UL*

H 100 cm / 39.37"
Ø 70 cm / 27.55"

6×E14×40 W max
USA 6×E12×40 W max
(not included)

Paralumi/shade SAT/17H17/SN



G08

* "UL" logo refers to articles which can be modified with UL-compliant components. The "UL" listing mark stands for tested and evaluated product to recognized us safety standards.