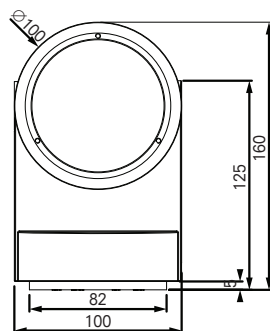
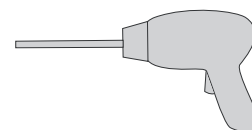


Technics



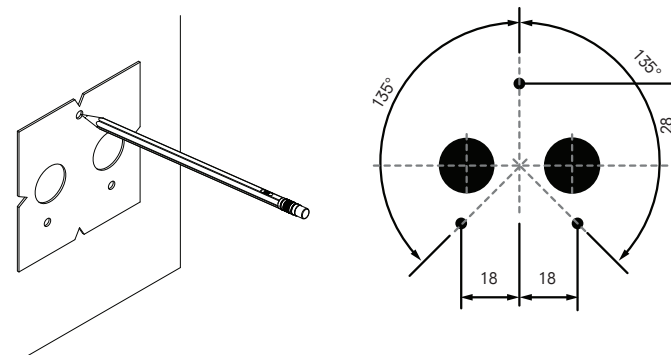
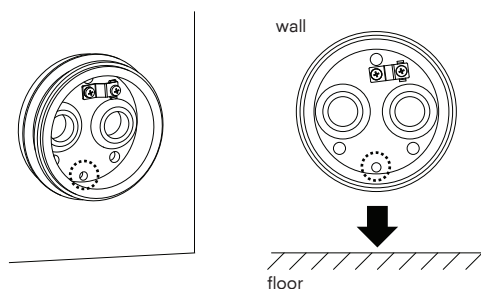
Name	Reference	Voltage ⚡	Current
Wabi 80 gear exclusive	KR943252		350mA
Wabi 80 gear inclusive	KR943052	230V	

Please make sure the main voltage is disconnected before proceeding! ⚡



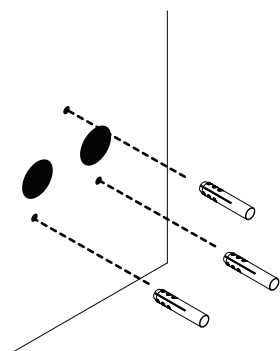
1 dimensions

IMPORTANT NOTE:
when installed on a WALL, the position of the drainage hole in the installation part is important.
make sure the drainage hole is on the bottom side/facing downward

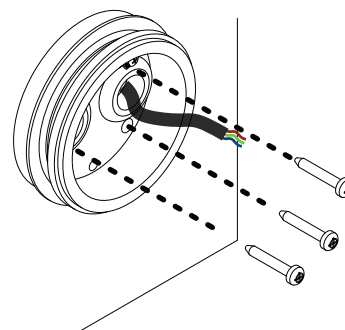


the delivered cardboard mold can be used to indicate the installation holes

2 installation



drill three holes (D 8mm) and on or two large holes for the cable throughput
insert the wall plugs



pull the connection cable(s) through the liquid tight bushings and fix the installation part with three screws. Add the rubber O-ring underneath each screw!

installation

kreon nv

Industrieweg Noord 1152
3660 Oplabbek
Belgium

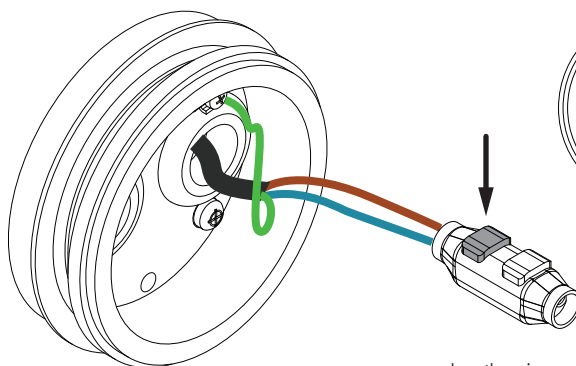
Tel + 32 89 81 97 80
Fax + 32 89 81 97 90

www.kreon.com
mailbox@kreon.be

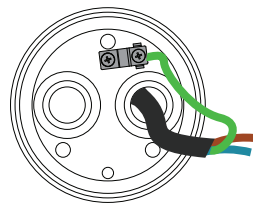
revision date 30/03/2017
KR8430522152

Sheet 1/4

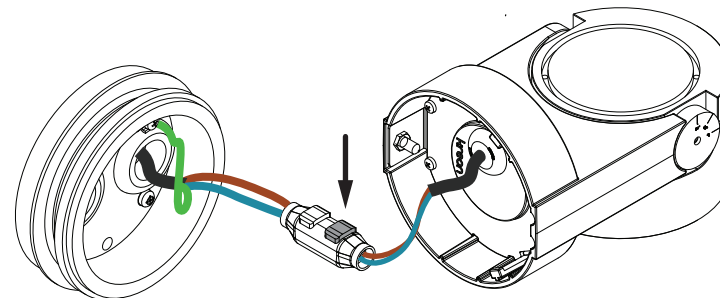
in case of gear inclusive



connect the ground wire to the ground bracket, fix the wire underneath the screw
fix the L and N to the delivered IP connector



when the wires are inserted in the connector, close that side of the connector by applying pressure with a pliers. DO NOT close the other side yet!



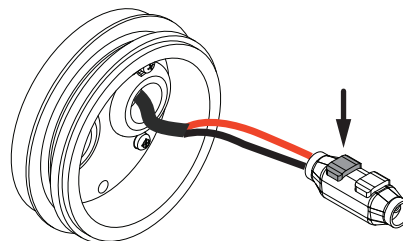
insert the wires coming from the fixture to the other end of the connector
make sure blue is connected with blue and brown with brown.
close that side of the connector as well by applying pressure with a pliers.

installation

in case of gear exclusive

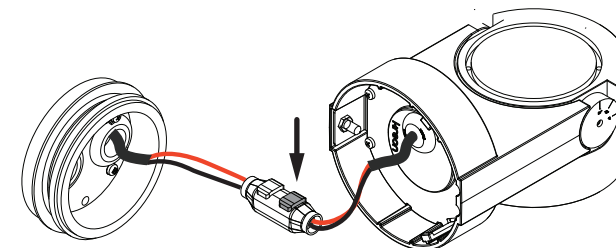
IMPORTANT NOTE:

mind that the gear cannot be installed behind the wabi (e.g. in a hollow wall/ceiling).
the gear should be installed at a distance, where it can still be reached in case of a problem.
max. distance between gear and fixture = 5m.
a greater distance might cause RFI, check specifications of the driver supplier.
the cable entering the wabi must be for the connection between driver and fixture



connect the red and black wire to the connector
mind polarity! + = red, - = black

when the wires are inserted in the connector, close that side of the connector by applying pressure with a pliers. DO NOT close the other side yet!



insert the wires coming from the fixture to the other end of the connector
make sure red is connected with red and black is connected with black.
close that side of the connector as well by applying pressure with a pliers.

installation

kreon nv

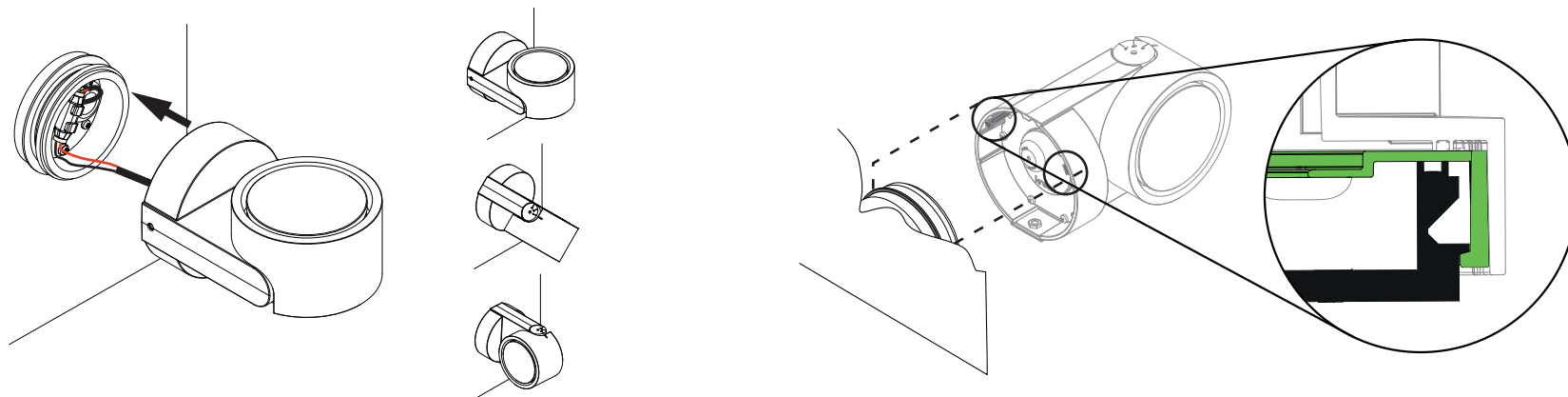
Industrieweg Noord 1152
3660 Opglabbeek
Belgium

Tel + 32 89 81 97 80
Fax + 32 89 81 97 90

www.kreon.com
mailbox@kreon.be

revision date 30/03/2017
KR8430522152

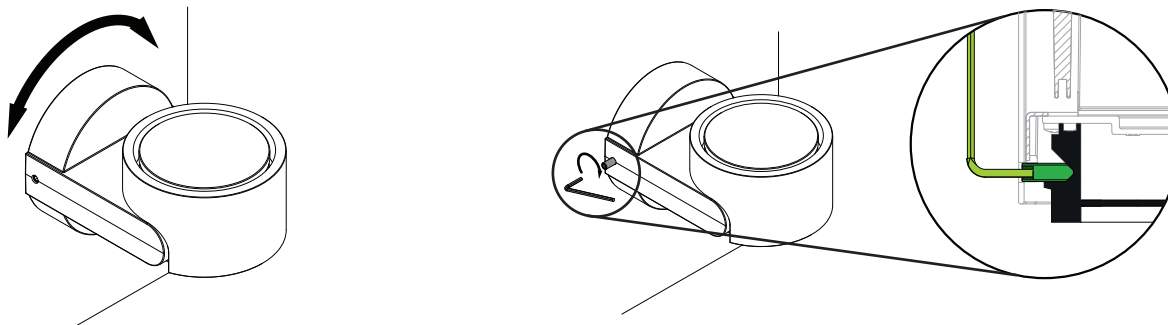
Sheet 2/4



installation

mount the fixture onto the installation part in any desired position

make sure the two indicated nails at the bottom of the fixture snap behind the indicated rail on the installation part



installation

at this point the position of the fixture can still be adjusted slightly

fix the fixture in the desired position with the M5 hex key
make sure the fixture is fixed firmly

inclination of the head in a desired position

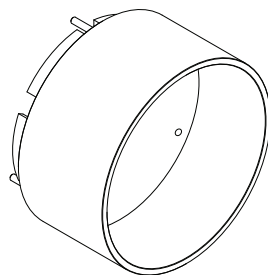


installation

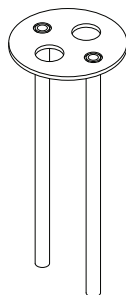
loosen the screw in the angle indicator part a little bit
until the head is free to move

position the head in the desired position
and block its position by fixing the screw again

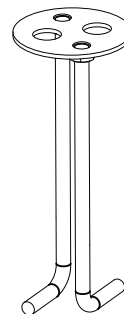
KR743052 - glare preventor



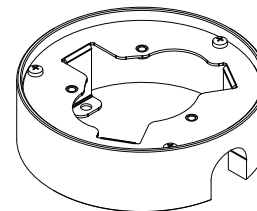
KR743850 - ground pin



KR743750 - concrete anchor



KR743950 - spacer



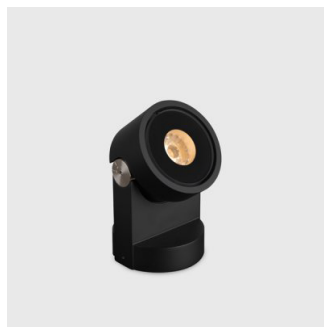
3 accessories

check manual: KR8430502169

check manual: KR8430502168

check manual: KR8430502168

check manual: KR8430502168



4 pictures