

Products / Dining Tables / Frame Aluminium Table 300x120x74

Frame aluminium table 300x120x74

by Ramón Esteve

Frame, outdoor collection by Ramon Esteve, comes from generating serene and timeless shapes using the framework as elementary geometry. The endless possibilities offered by the material using advanced technology, was the motivation to explore the limits.

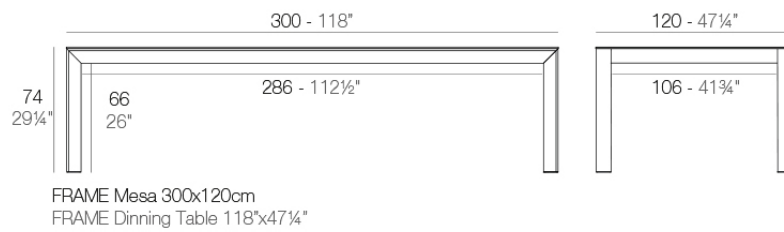


Info

Description

Extruded aluminum with cast lacquered aluminum base. HPL Table top ó Dekton Table top. Item suitable for indoor and outdoor use. HPL Table top.

Weight: 70.7 Kg



Finishes

finishes

LACQUERED

Ref. 54242F



white



black



ecru

Lacquered aluminium profile.

LACQUERED + SOLID CORE

Ref. 54242FB



notte blue



british gray



traffic gray



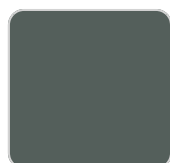
crema



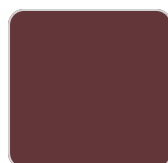
castoro fiber



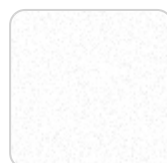
bronze



modo green



purjai red



white

Lacquered aluminium profile.

Ambients

