

Products / Planters / High Cone Pot ø30x39

High cone pot ø30x39

The most extensive collection of indoor and outdoor planters designed by Studio Vondom. Timeless and minimalist designs that allow you to create unique and original atmospheres for homes, restaurants and any space.

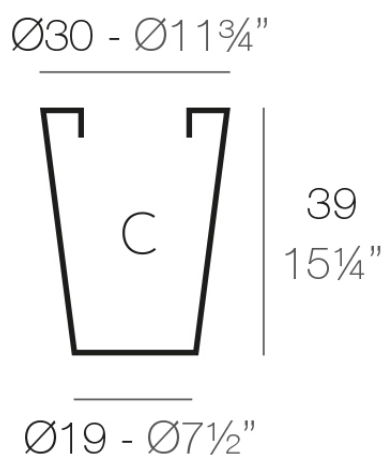


Info

Description

Pot made of polyethylene resin by rotational moulding. 100% Recyclable. Item suitable for indoor and outdoor use. Available in different finishes.

Weight: 0.6 Kg



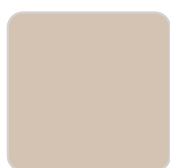
CONO ALTO Ø30	C = 20 L
HIGH CONE Ø11 $\frac{3}{4}"$	C = 5 $\frac{1}{4}$ gal

Finishes

finishes

SIMPLE

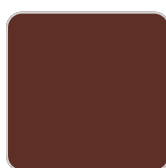
Ref. 40530



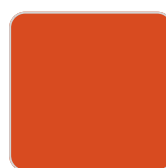
crema



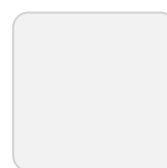
green



purjai red



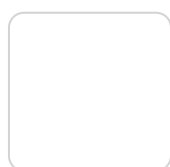
orange



ice



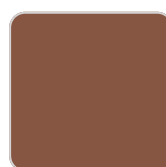
notte blue



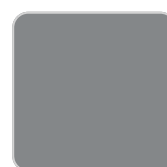
white



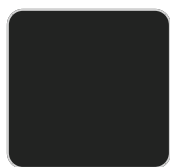
black



bronze



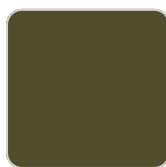
steel



anthracite



red



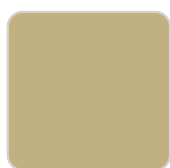
khaki



taupe



ecru



beige

Matt finishes pot one wall

LACQUERED

Ref. 40530F



purjai red



white



black



bronze



steel



anthracite



red



khaki



taupe



ecru



beige



modo green



champany

Lacquered Polyethylene

