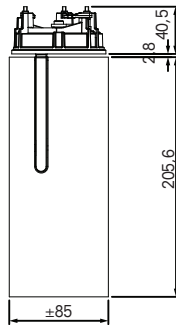


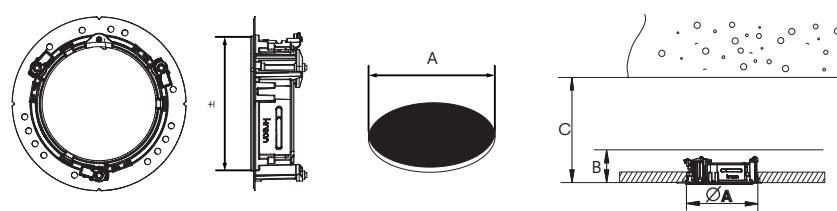
technics



Name	Reference	Current	Voltage
Holon 80 directional recessed	KR96243x-xxxx-xx	1050mA	-
Holon 80 directional in-cana mid	KR93431x-xxxx-xx	-	230V
Holon 80 directional in-cana end	KR93441x-xxxx-xx	-	230V

Please make sure that main voltage is disconnected before proceeding!

1 dimensions

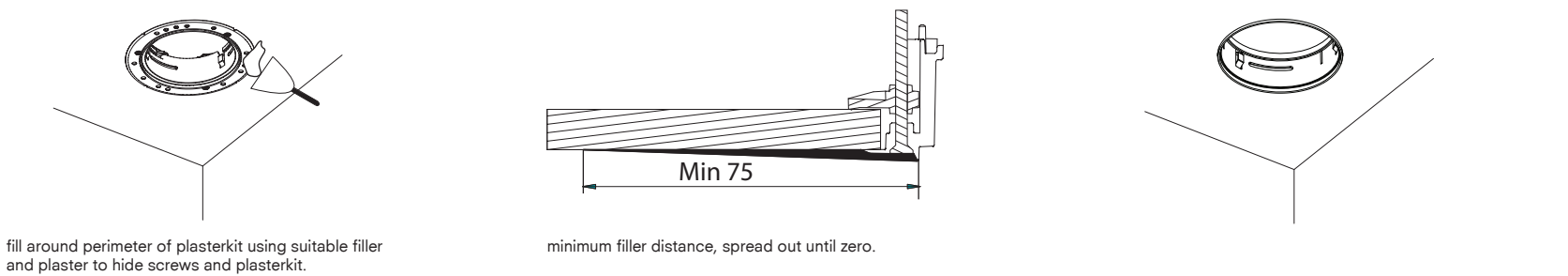
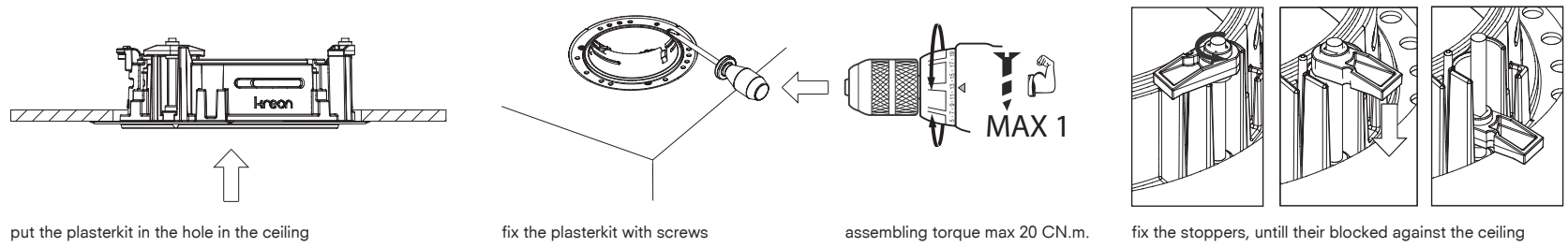


name	reference	visible ±	cut out A	B*	C
Aplis in-line 80 plasterkit no shadow gap	KR717104	± 80	± 102	60	**
Aplis in-line 80 plasterkit shadow gap	KR717108	± 86	± 102	60	**

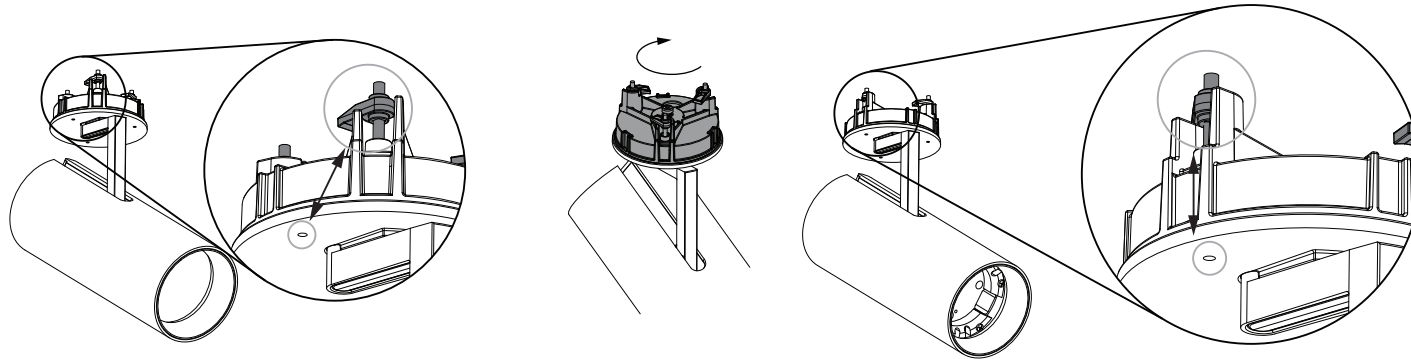
* installation depth B is in case the driver is placed at a distance, so doesn't need to be pushed through the plasterkit
 ** installation depth C is in case the driver has to be pushed through the plasterkit in order to be close to the fixture. Mind that the driver dimensions WxH cannot exceed 67x29,5mm! the length of the driver determines C as it has to be pushed perpendicular through the plasterkit.
 Depth = length of the driver + 30mm
 If the length of the driver is e.g. 100mm then C = 130mm

2 dimensions

3 installation



installation

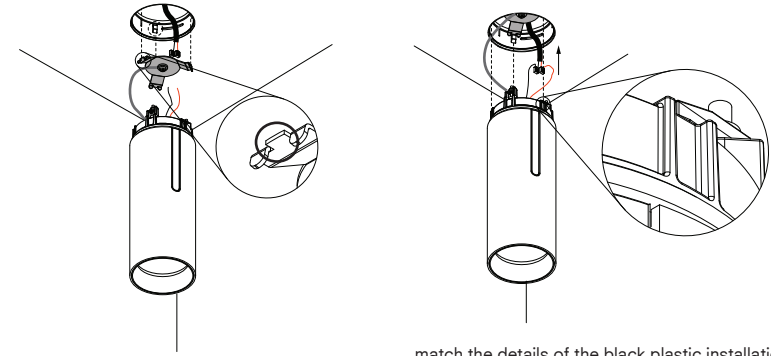
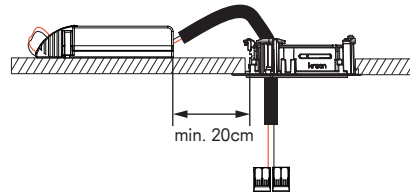
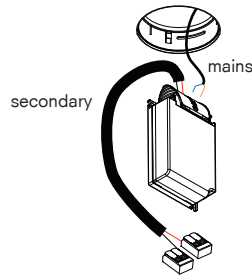


installation

before installation, check if the holes in the cover disc match the screws in the installation disc.

rotate the cover disc counterclockwise until it's blocked and check if the holes match the screws.

mind the polarity of LED!
+ = red, - = black



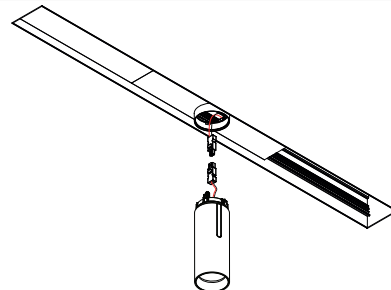
match the details of the black plastic installation part with the springs of the plasterkit

installation

connect the mains voltage to the gear
use the delivered cable for wiring the secondary connection of the gear (use the open end of the cable)

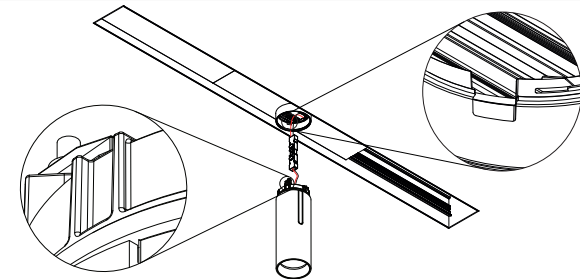
match the details on the fall safety bracket with the springs in the plasterkit.
The indicated flanges needs to click behind the springs

connect the red and black wire coming from the fixture to the red and black wire of the delivered cable. (use the connectors) Push the connectors on the ceiling so they do not interfere with further installation of the fixture



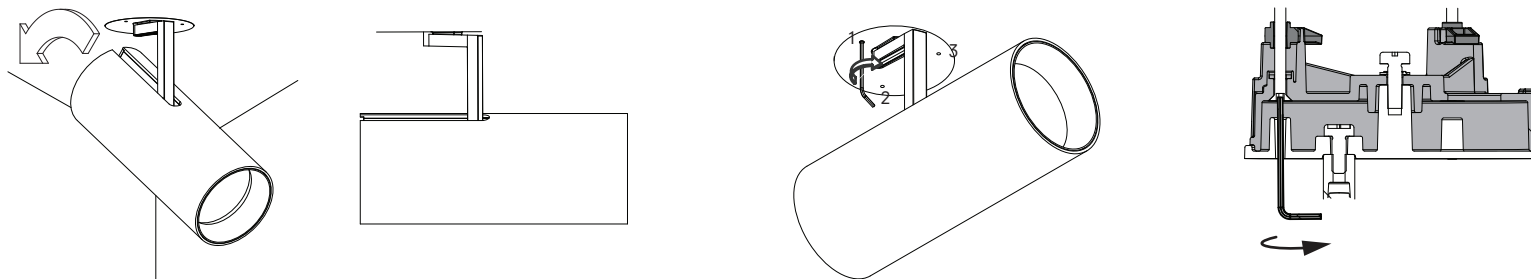
installation

in case of holon 80 directional in-cana: connect male connector to female connector which is already installed in the profile



match the details on the black plastic installation part with the openings inside the round installation ring

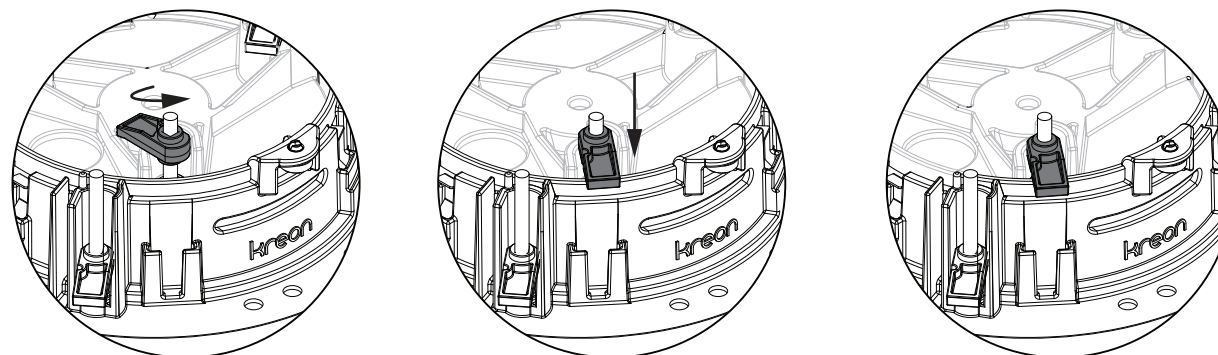
kreon



installation

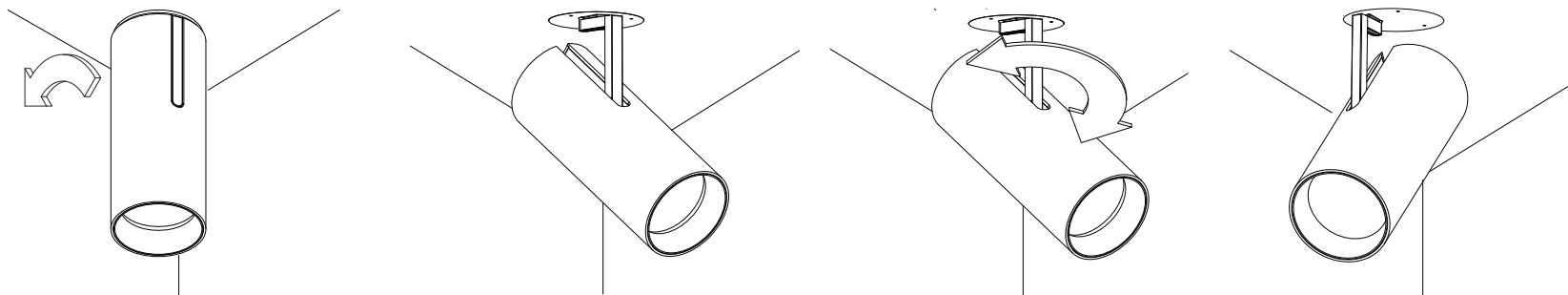
incline the tube by pulling it, to make space to reach the screwholes

fix the fixture by turning the three screws with the hex key



installation

assembly principle



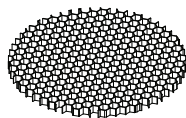
installation

once the holon is completely installed it can be inclined in any angle up to 90° by pullin the tube

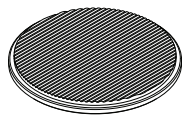
it can also be rotated for 330°

in case of accessories

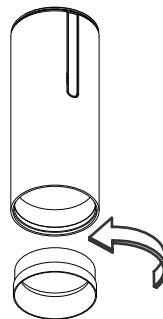
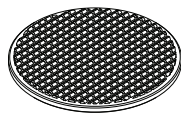
KR726473



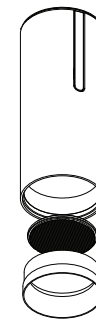
KR726100



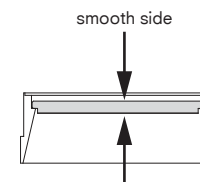
KR726200



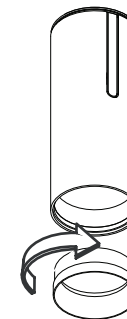
unscrew the louvre in order to take it out of the fixture



place the accessory in the louvre

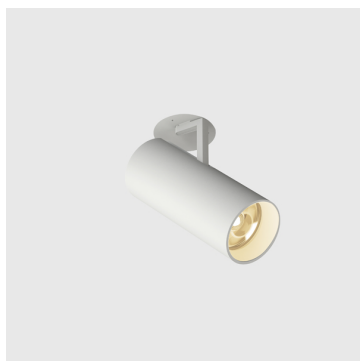


in case of diffusing/sculpture lens: place the structured side downwards



screw the louvre + the accessory back in

4 | accessoires



5 | pictures