

Products / Low Tables / Frame Aluminium Table 100x100x32

Frame aluminium table 100x100x32

by Ramón Esteve

Frame, outdoor collection by Ramon Esteve, comes from generating serene and timeless shapes using the framework as elementary geometry. The endless possibilities offered by the material using advanced technology, was the motivation to explore the limits.



Info

Description

Extruded aluminum with cast lacquered aluminum base. HPL Table top ó Dekton Table top. Item suitable for indoor and outdoor use. HPL Table top.

Weight: 20.95 Kg



FRAME Mesa Baja Aluminio 100x100 cm.
 FRAME Low Table Aluminium 39 1/4 x 39 1/4"



Finishes

finishes

LACQUERED

Ref. 54245F



white



black



ecru

Lacquered aluminium profile.

LACQUERED + SOLID CORE

Ref. 54245FB



white

Lacquered aluminium profile.

LACQUERED + DEKTON

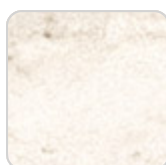
Ref. 54245FM



kelya



entzo



danae

Lacquered aluminium profile.

Ambients

