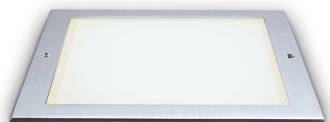


## General info

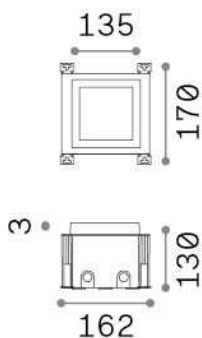
## Outdoor - Recessed lights



<b>Ean</b>	8021696325675
<b>Item</b>	TAURUS PT D13 WIDE SQUARE
<b>Installation</b>	Recessed lights
<b>Guarantee</b>	5 years
<b>Gross weight</b>	1.58 kg
<b>Volume</b>	-

## Technical info

<b>Net weight</b>	1.58 kg
<b>Insulation class</b>	I
<b>Protection index</b>	IP67
<b>Compliance</b>	CE
<b>Operating temperature</b>	-15° ~ +45 °C
<b>Dimmer</b>	NO, On-Off
<b>Power output</b>	220-240 V AC 50/60 Hz
<b>Power supply</b>	In-built, included Replaceable (by qualified operators only), electronic
<b>Recessed specifications</b>	Ø 128 - h. ≥ 110 , 5-30
<b>Adjustability</b>	vert. +/-30°



## Source info

<b>Integrated source</b>	Integrated LED module
<b>Replaceable source</b>	Replaceable (by qualified operators only)
<b>Power</b>	11 W
<b>Emission</b>	Direct
<b>Max consumption</b>	max 11,00 W
<b>Features LED</b>	LED SMD BRIDGELUX
<b>CCT LED</b>	3000 K
<b>Duration LED (t. 25°C)</b>	50000 h
<b>CRI</b>	> 80
<b>Light beam</b>	114°
<b>Light beam flux</b>	1250 lm
<b>Useful light flux</b>	530 lm