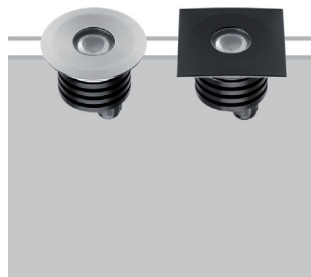


## FATBOY 2

Uplights

design Roberto Mantovani



IP67-rated, ground recessed fixtures of the highest build quality, extremely compact dimensions and high output. Fully anodized aluminium body, versions with front in vehicle-proof AISI 316L stainless steel and in walkable powder-coated anodized aluminium. Extra-clear tempered glass, ATEX cable gland, neoprene cable.

Incassi a terra IP67 di altissima qualità costruttiva, con dimensioni estremamente contenute ed elevati flussi luminosi. Corpo in alluminio anodizzato a spessore, versioni con frontale in acciaio INOX AISI316L carrabili, in alluminio anodizzato e verniciato a polveri calpestabili. Vetro extrachiario temprato, pressacavo ATEX, cavo in neoprene.

Encastrables au sol IP67 de très haute qualité constructive, avec des dimensions extrêmement contenues et flux lumineux élevés. Corps en aluminium anodisé à épaisseur, versions avec frontal en acier INOX AISI316L carrossables, en aluminium anodisé et peint en poudre praticables. Verre extra-clair trempé, presse-étoupe ATEX, câble en néoprène.

Einbau am Boden mit Schutzklasse IP67 mit hoher konstruktiver Qualität von extrem kleiner Größe und hohen Lichtströmen. Gehäuse aus eloxiertem Aluminium mit Stärke, Versionen mit Vorderteil aus Edelstahl AISI 316L, aus eloxiertem und pulverbeschichtetem Aluminium. Extra gehärtetes Glas, ATEX Kabeldurchführung, Neopren-Kabel.

IP67 made in Italy



### Supply current

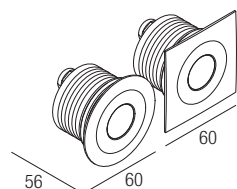
350-500mA (V, 2.9V)

### Power

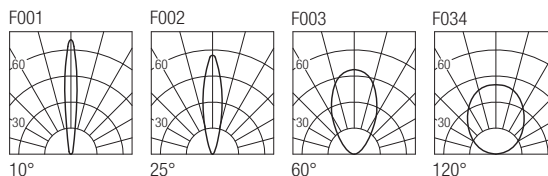
1-2W

### Series wiring

### Dimensions



### Photometric diagrams

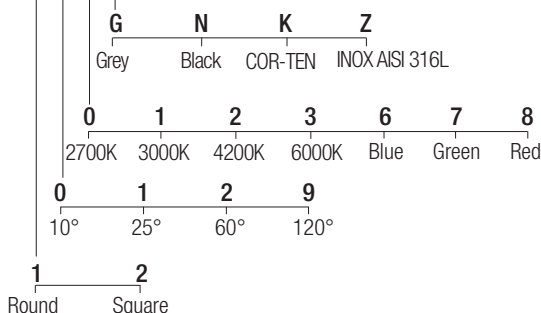


### CCT/CRI/Flux

	350mA	500mA
2700K	89lm	128lm
3000K	93lm	133lm
4200K	103lm	154lm
6000K	114lm	165lm

### Code construction

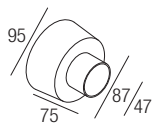
FB1 X X X X



Note: cable cut to measure on request

### Optionals

CSFB01  
Recessing box



### Drivers

350 mA	on/off	dimmable	500 mA	on/off	dimmable
AL1034 (1..11)	30mm IP20	AL4000 (1..12)	72mm IP20 PUSH 1..10V	AL1074 (1..7)	30mm IP20
AL1035 (1..11)	40mm IP20	AL4051 (1..12)	72mm IP20 DALI	AL1077 (1..6)	40mm IP20
AL1037 (1..16)	55mm IP20 S.P.	AL4053 (1..12)	60mm IP20 IGBT-TRIAC	AL1084 (1..11)	55mm IP20 S.P.
AL9011 (1..12)	60mm IP67			AL9051 (1..10)	60mm IP67
				AL4010 (1..12)	72mm IP20 PUSH 1..10V
				AL4151 (1..12)	72mm IP20 DALI
				AL4153 (1..12)	60mm IP20 IGBT-TRIAC