

Products / Planters / Angular Pot

# Angular pot

The most extensive collection of indoor and outdoor planters designed by Studio Vondom. Timeless and minimalist designs that allow you to create unique and original atmospheres for homes, restaurants and any space.



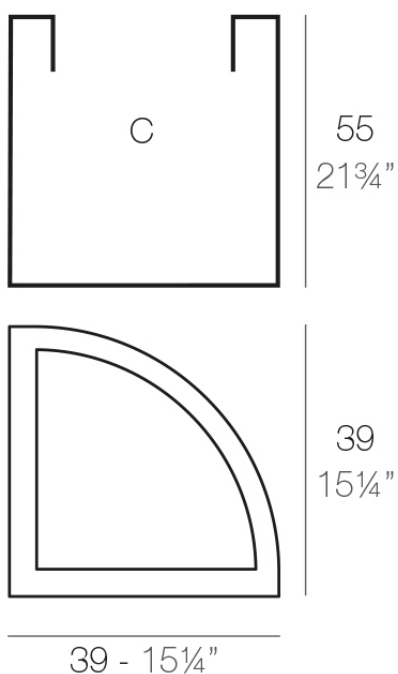
# Info

---

## Description

Pot made of polyethylene resin by rotational moulding. 100% Recyclable. Item suitable for indoor and outdoor use. Available in different finishes.

Weight: 1.9 Kg



ANGULAR 39 x 55 cm      C = 70 L 55 cm  
 ANGULAR 15 1/4" x 21 3/4"      C = 18 1/2 gal \*

# Finishes

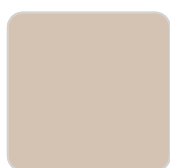
---

## finishes

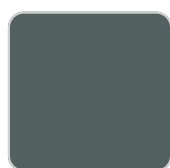
---

### SIMPLE

Ref. 41070



crema



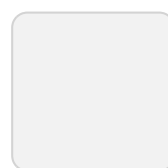
green



purjai red



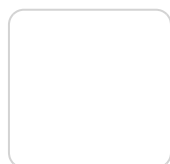
orange



ice



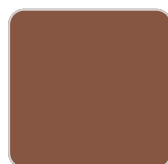
notte blue



white



black



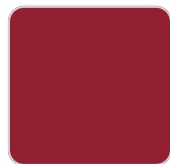
bronze



steel



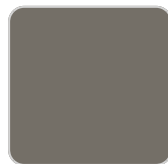
anthracite



red



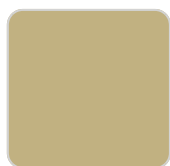
khaki



taupe



ecru



beige

Matt finishes pot one wall

### LACQUERED

Ref. 41070F



purjai red



white



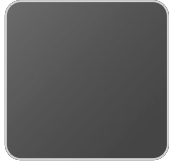
black



bronze



steel



anthracite



red



khaki



taupe



ecru



beige



modo green



champany

## Lacquered Polyethylene

