

Products / Low Tables / Frame Sun Chaise Table 60x60x2

Frame sun chaise table 60x60x2

by Ramón Esteve

Frame, outdoor collection by Ramon Esteve, comes from generating serene and timeless shapes using the framework as elementary geometry. The endless possibilities offered by the material using advanced technology, was the motivation to explore the limits.

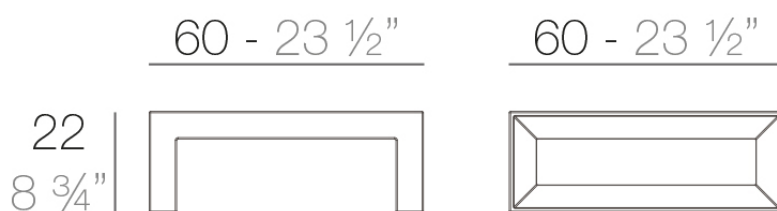


Info

Description

Made of polyethylene resin by rotational moulding. 100% Recyclable. Item suitable for indoor and outdoor use. Available in different finishes.

Weight: 6 Kg



FRAME Mesa Tumbona
FRAME Sun Chaise Table

Finishes

finishes

BASIC

Ref. 54092



purjai red



white



black



steel



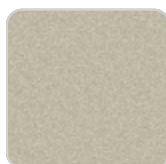
red



khaki



taupe



ecru



beige



green



orange



notte blue



crema

Matt Polyethylene

LACQUERED

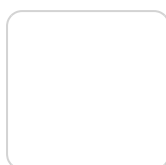
Ref. 54092F



modo green



purjai red



white



black



bronze



steel



champany



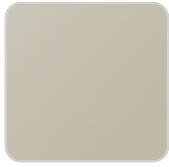
red



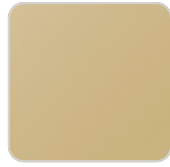
khaki



taupe



ecru



beige

Lacquered Polyethylene

