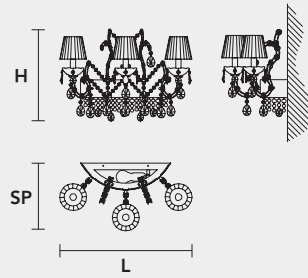


VE 921 A3+1

MASIERO

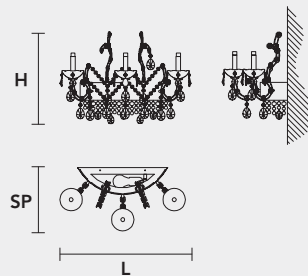
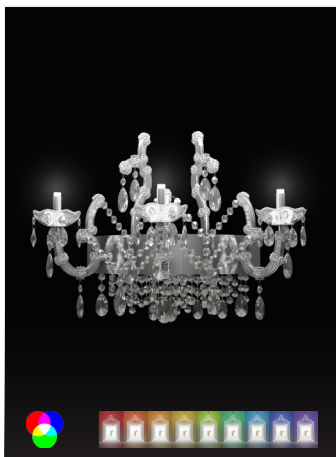


VE 921 A3+1 MT TRADITIONAL VERSION

H 40 cm 15,75"
L 60 cm 23,62"
SP 30 cm 11,81"

4 x E14 x 40 W max
Triac Dimmable

Lighting system: Traditional E14 lightbulbs (not included)
Frame: Chrome or gold plated metal covered by transparent glass
Lampshades: Cottonette (COT/12/WH)
Pendants: Transparent

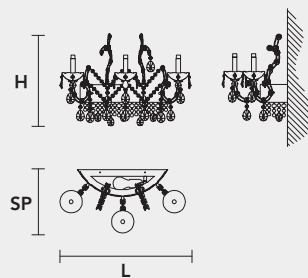


VE 921 A3+1 RW RGB-W LED VERSION

H 40 cm 15,75"
L 58 cm 22,83"
SP 28 cm 11,02"

4 x RGB-W LED SOURCES (driver included)
1320 lm at 3000 K - CRI>85 - 16 W

Controlled by: DMX or Masiero Smart Light App
Frame: Chrome or gold plated metal covered with transparent glass
Lampshades: No lampshades included
Pendants: Transparent

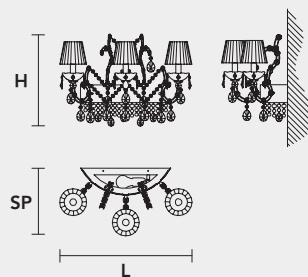


VE 921 A3+1 DW DYNAMIC WHITE LED VERSION

H 40 cm 15,75"
L 58 cm 22,83"
SP 28 cm 11,02"

4 x DW LED SOURCES (driver included)
DYNAMIC White from 2700 K to 6500 K
1960 lm max at 4700 K - CRI>85 - 16 W

Controlled by: DMX or Masiero Smart Light App
Frame: Chrome or gold plated metal covered with transparent glass
Lampshades: No lampshades included
Pendants: Transparent



VE 921 A3+1 CG COLOURED GLASS VERSION

H 40 cm 15,75"
L 60 cm 23,62"
SP 30 cm 11,81"

4 x E14 x 40 W max
Triac Dimmable

Lighting system: Traditional E14 lightbulbs (not included)
Frame: Painted metal covered with painted glass
Lampshades: Only organza (ORG/14/...)
Pendants: Color painted glass
Available in: Green/ Orange/ Yellow/ Purple/ Lilac/ Blue/ Red/ White/ Black

