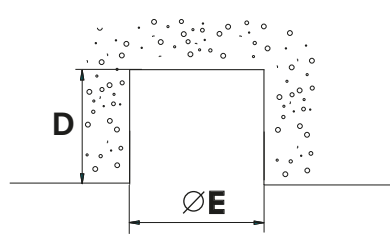
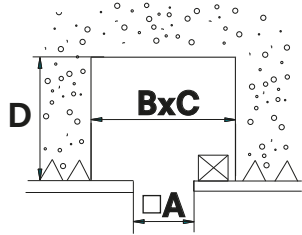


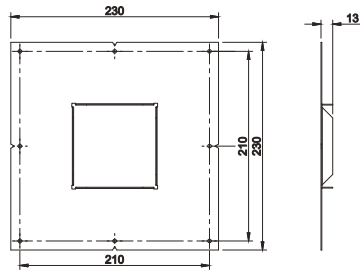
technics	In case of precast concrete panels, gear inclusive.	In case of finished concrete ceiling, gear exclusive.	Name	Reference	Lamp type	A	B	C	D	∅E
			Concrete plasterkit down 80	KR747702	QR-CBC51	□ 91	320	320	200	200
			LED dir (Kr94773x)	□ 91	300	300	157	170		
			LED dir (Kr94793x)	□ 91	344	344	120	390		
			Fixed, WW (Kr94703x, Kr94743x)	□ 91	260	260	100	250		
			Audio	□ 91	200	200	130	150		
			Concrete plasterkit down 165	KR747712	QT12-ax	□ 287	300	300	200	
					QR-LP111/LED-LP111	□ 287	300	300	230	
					HIT-TC	□ 287	300	300	230	
					HIR-CE111	□ 287	300	300	230	
					QT12-ax WW	□ 287	300	300	175	
					HIT-TC WW	□ 287	300	300	205	
					LED wallwasher	□ 287	300	300	200	
					LED	□ 287	300	300	200	

## 1 cut out

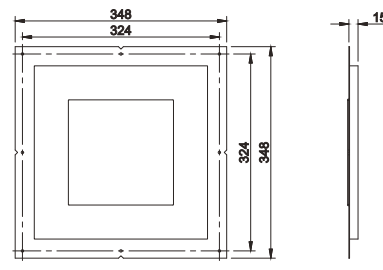


## 2 dimensions

Down 80

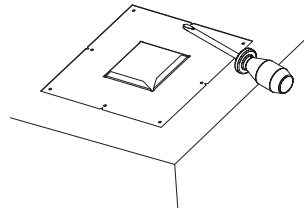


Down 165

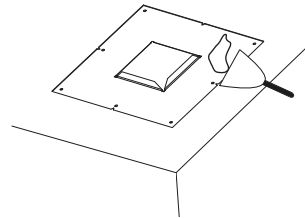


## 3 installation

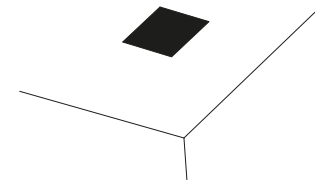
Fix the plasterkit with screws.



Fill around perimeter of plasterkit using suitable filler and plaster to hide screws and plasterkit.



For installing Down 80 and 165, see the corresponding installation manual.



## 4 installation

kreon nv

Industrieweg Noord 1152  
3660 Oplabbeek  
Belgium

Tel + 32 89 81 97 80  
Fax + 32 89 81 97 90

www.kreon.com  
mailbox@kreon.be

revision date: 17/02/17  
KR8477021866

sheet 1/1