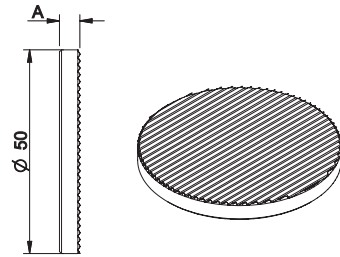


technics



Name

Reference

A

KR704100

sculpture lens

5

KR704200

diffusing lens

4

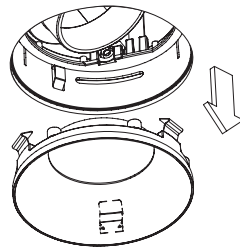
KR772342

antiglare louvre

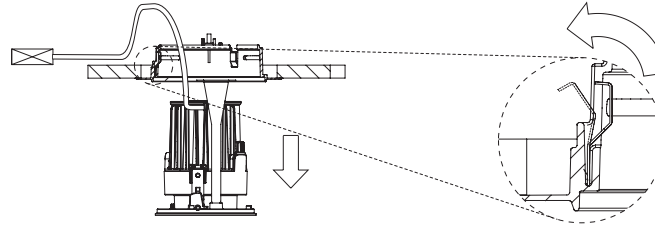
8

1 dimensions

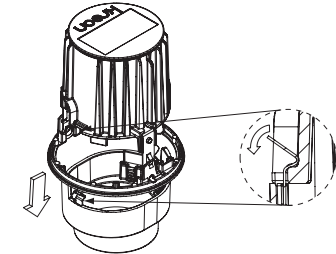
2 installation



Remove the louvre.

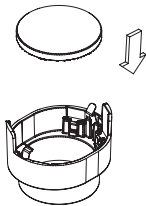


Remove the assembly from the plasterkit by pushing manually against the springs.

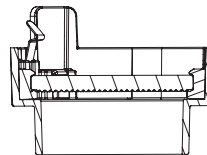


Bend the springs to remove the filterholder.

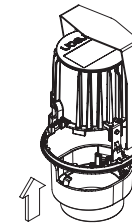
3 installation



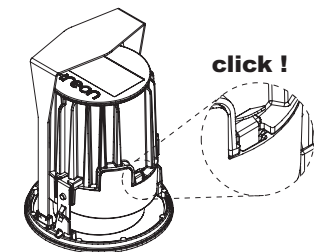
Add extra filter to the filterholder.



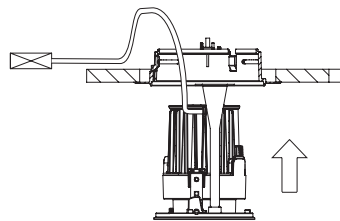
Maximum capacity= 1 filter.



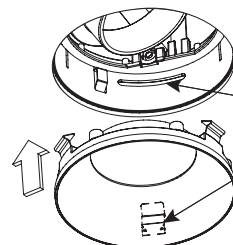
Add filterholder.



4 installation



Put the assembly in the plasterkit.



Insert the louvre in the plasterkitbox.

Align the springs with the slots.