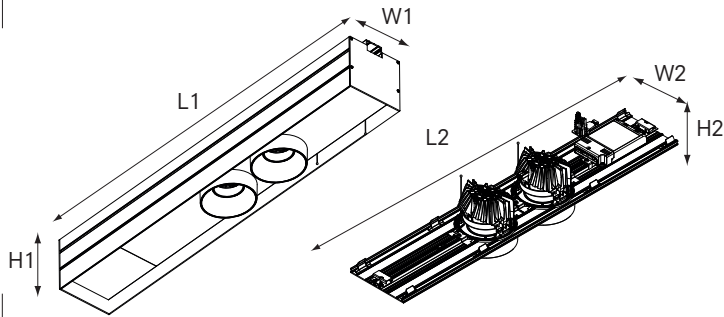
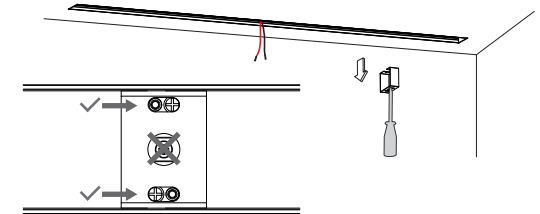
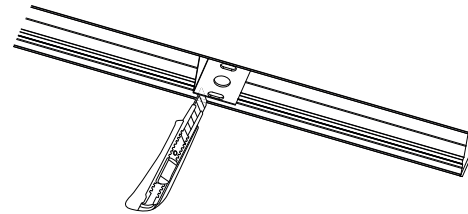
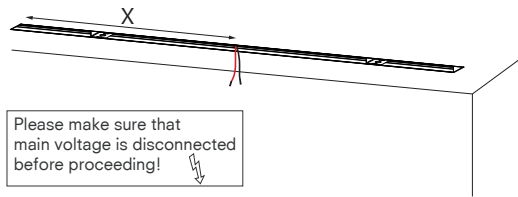


technics



Name	Reference	L1 x W1x H1	L2 x W2x H2
Cana 80 recessed main profile	KR77520x	Lx102x140	
Cana 120 recessed main profile	KR79520x	Lx152x140	
Module 80 single	KR9340(1)1(6)x-xxxx-xx-xx		450(350)x95x110
Module 80 twin	KR9345(6)1(6)x-xxxx-xx-xx		550(450)x95x110
Holon 80 dir. single	KR9343(4)1x-xxxx-xx-xx		450(350)x95x270
Prol 120 mod single	KR9340(1)7(2)x-xxxx-xx-xx		500x145x100
Prol 120 mod twin	KR9345(6)7(2)x-xxxx-xx-xx		750x145x100

1 dimensions

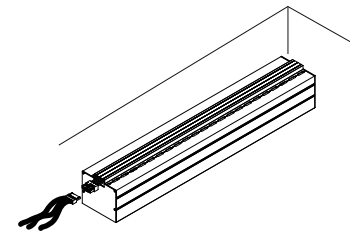
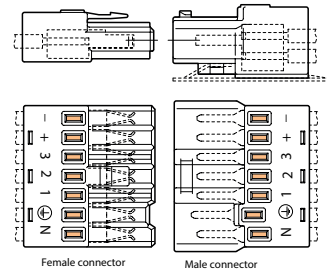
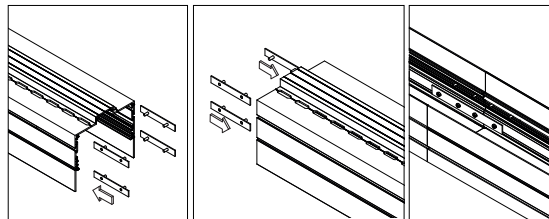


2 installation

To install the plasterkit, see installation manual KR8050002138. supply power at the correct position, see orderform!

before removing the brackets, make sure there is no plaster residue left between the bracket and the plasterkit profile, use stanley knife to remove the residue if necessary. Do not damage the paint in the process!

Unscrew the sheet metal brackets. Keep the M4 screws for fixing the main profile to the plasterkit. Do not unscrew the middle screw!



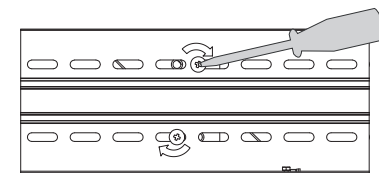
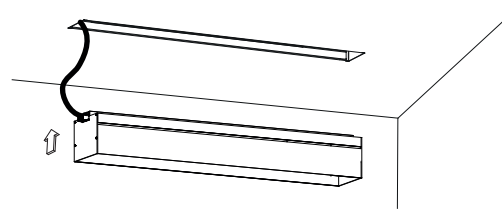
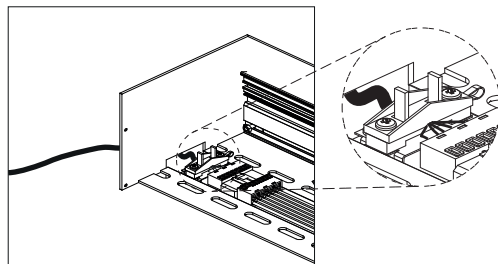
3 installation

In case of several pieces, connect the profiles with the connection brackets. Slide the small brackets into the profile, and afterwards slide the big brackets on top. Ficate everything with the M4 nuts

Make power connection to female connector, see order form for used circuits.

Make correct connection with male connector in the luminaire, only use single core wiring.

4 installation

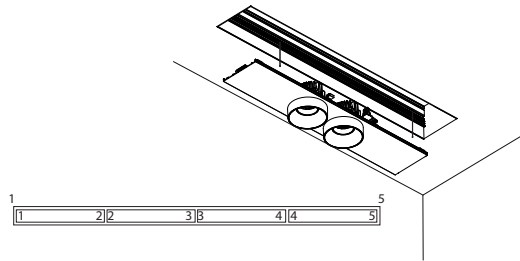


Use strain relief for power supply.

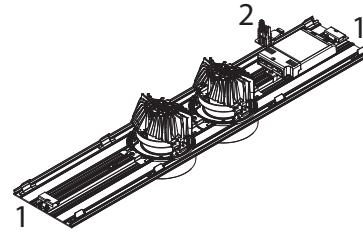
Add the main profile to the plasterkit.

Fix the main profile to the plasterkit brackets with the added screws.

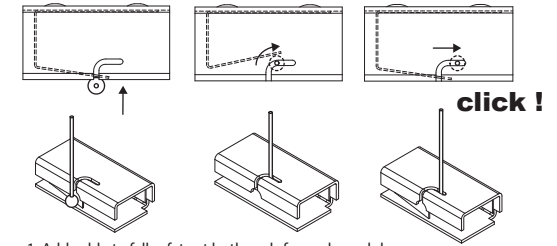
5 installation



Arrange the modules on a flat, clean table. Modules are labeled 1 2, 2 3, 3 4....5 6. Nr.1 inside the main profile indicates where to start.

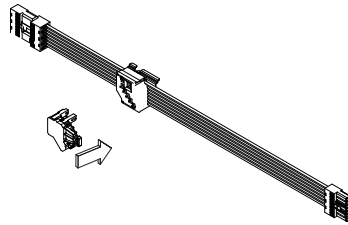


1: add safety cables 2: connect module connector to flat cable

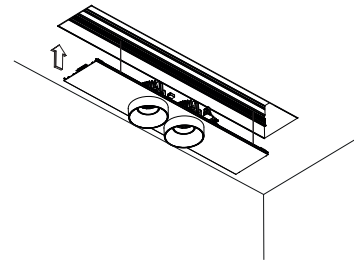


1: Add cable to fall safety at both ends for each module.

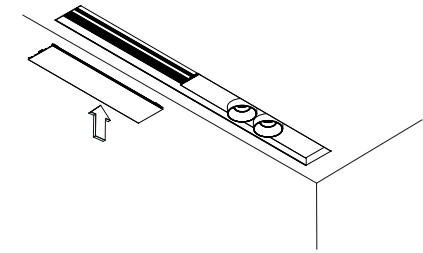
6 installation



2: Connect connector to flat cable

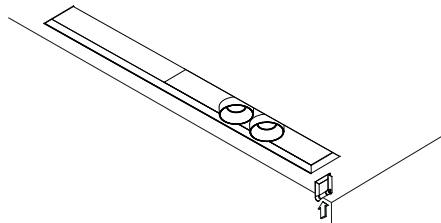


Click the modules in the main profile.

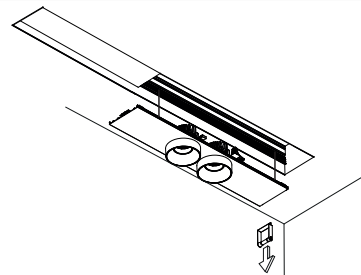


Click the covers to the main profile.

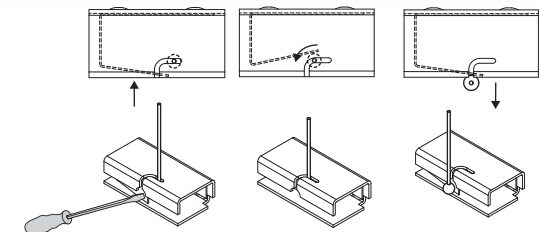
7 installation



To remove the module or cover use the remover tool. Slide the tool between cover and endcap main profile until it snaps.



Pull at the remover tool and remove the module or cover.



Remove cable from fall safety at both ends.

When the fall safety is unlocked, support the profile to avoid falling.



8 installation

kreon nv

Industrieweg Noord 1152
3660 Opglabbeek
Belgium

Tel + 32 89 81 97 80
Fax + 32 89 81 97 90

www.kreon.com
mailbox@kreon.be

revision date: 20/12/2016 | Sheet 2/2
KR8050202150