

technics		Name	Reference	Lamptype	∅A	BxC	D _{min}	ExF	G _{min}	T _{min} -T _{max}
	Plasterkit aplis in-line 80 (shadow gap)	QR-CBC51	KR917703	QR-CBC51	102	170x170	130	320x320	200	
		LED dir	KR917733	LED dir	102	170x170	140	300x300	157	
		LED dir	KR91793x	LED dir	102	∅ 95	115	344x344	120	
		Fixed, WW	KR9173xx	Fixed, WW	102	200x200	100	260x260	100	
		Audio	KR91779x	Audio	102	150x150	130	200x200	130	
		Dir/LED MR16	KR917803/KR917233	Dir/LED MR16	102	191x191	110	350x350	110	
		Dir/LED PAR16	KR917843/KR917253	Dir/LED PAR16	102	176x176	130	330x330	130	
		Diapason 40/80/120 base	KR9x661x	Diapason 40/80/120 base	102	110x110	70*	110x110	70*	
		Holon 80 directional rec.	KR96222x-xxxx-xx	Holon 80 directional rec.	102	110x110	60**	110x110	x***	
		ATO 80 in-line	KR9179xx-xxxx-xx-xx	ATO 80 in-line	102	∅ 150	110	300x300	157	
	Plasterkit aplis in-line 40	KR707104	LED dir, fixed, WW	KR9x7x33	63	110x110	80	110x110	80	
	Plasterboard thickness 80									9-26
	Plasterboard thickness 40 range									9-14

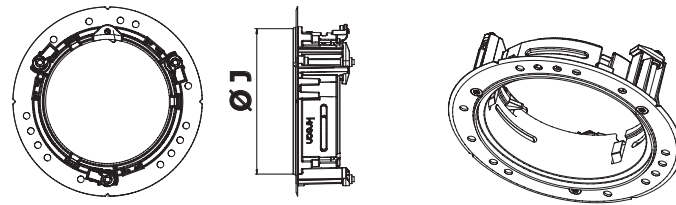
Remarks for diapason

*In case of standard driver (KR72024/ KR72022/KR72122) which needs to be pushed through the plasterkit
 In case of driver placed at distance (doesn't need to be pushed through the plasterkit) D/G_{min} = 60
 In case of a different driver, the installation dept D/G_{min} = length of driver + 30 mm

Remarks for holon

** installation depth D is in case the driver is placed at a distance, so doesn't need to be pushed through the plasterkit
 *** installation depth G is in case the driver has to be pushed through the plasterkit in order to be close to the fixture.
 Mind that the driver dimensions WxH cannot exceed 67x29,5mm! the length of the driver determines G as it has to be pushed perpendicular through the plasterkit. Depth = length of the driver + 30mm

1 cut out



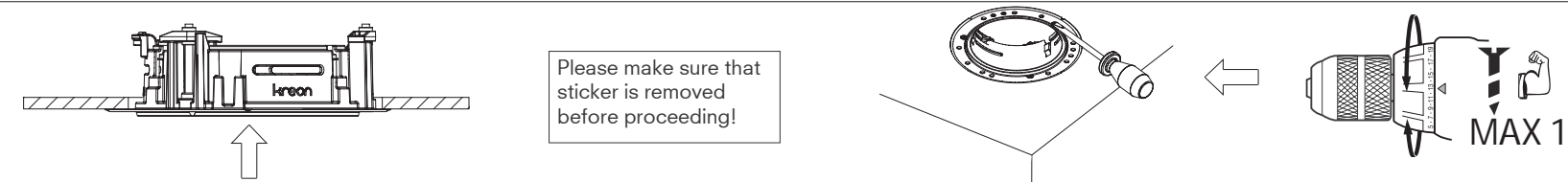
Name	Reference	Visible ØJ
Aplis in-line 80 plasterkit no shadow gap	KR717104	80
Aplis in-line 80 plasterkit shadow gap	KR717108	86
Aplis in-line 40 plasterkit shadow gap	KR717104	40

2 dimensions

Round plasterkit

3 installation

Put the plasterkit through the hole.

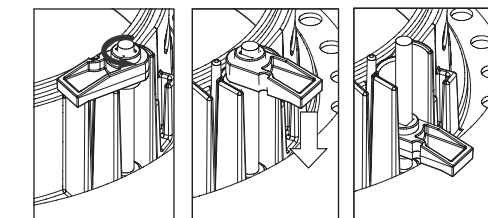


Fix the plasterkit with the screws.

Assembling torque max 20 cN.m.

4 installation

Assembling principle



Fill around perimeter of plasterkit using suitable filler and plaster to hide screws and plasterkit.

Minimum filler distance, spread out until zero.

