

ROSEMERY TL1G

Design by: Studio Stile Masiero



Struttura in metallo con decori in vetro colorato.

Pendagli in vetro colorato e paralumi in raso.

Metal frame with colored glass inserts.

Colorful glass pendants, satin shades.

Metallstruktur mit Einsätzen aus farbigen Kristallen.

farbiger Glas Behang, Lampenschirme aus Satin.

Structure en métal avec inserts en verre coloré.


Les pendentifs sont en verre coloré et les abat-jours sont en satin ivoire.

Металлический каркас с декором из цветного стекла. Подвесы из цветного стекла и кружевные абажуры.

CE 

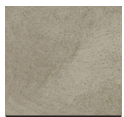
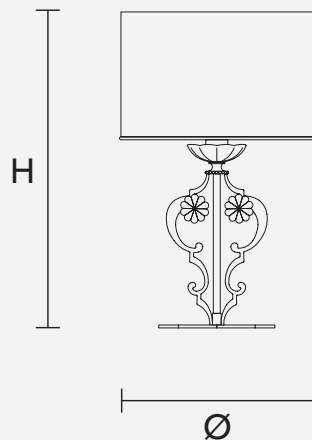
H 54 cm / 21.25"

Ø 33 cm / 12.99"

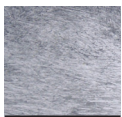
 1×E27×60 W max

USA 1×E26×60 W max
(not included)

Paralumi/shade SAT/33/ECRU
Paralumi/shade SAT/33/WH



P01



P15