

Products / High Tables / Frame Aluminium Table 200x60x105

Frame aluminium table 200x60x105

by Ramón Esteve

Frame, outdoor collection by Ramon Esteve, comes from generating serene and timeless shapes using the framework as elementary geometry. The endless possibilities offered by the material using advanced technology, was the motivation to explore the limits.

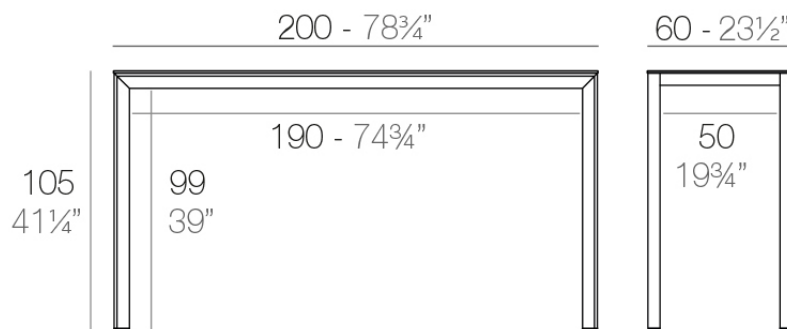


Info

Description

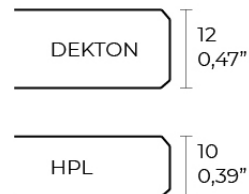
Extruded aluminum with cast lacquered aluminum base. HPL Table top ó Dekton Table top. Item suitable for indoor and outdoor use. HPL Table top.

Weight: 30.15 Kg



FRAME Mesa Alta Aluminio 200 x 60

FRAME Bar Table Aluminio 78³/₄" x 23¹/₂"



Finishes

finishes

LACQUERED

Ref. 54244F



white



black



ecru

Lacquered aluminium profile.

LACQUERED + SOLID CORE

Ref. 54244FB



white

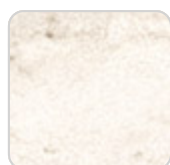
Lacquered aluminium profile.

LACQUERED + DEKTON

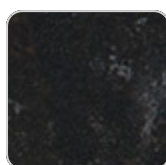
Ref. 54244FM



entzo



danae



kelya

Lacquered aluminium profile.

Ambients

