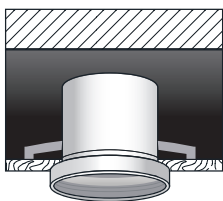
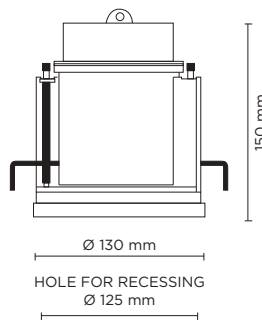



701005

CEILING MINI

Recessed luminaire for outdoor ceiling installation, phospho-chromatised and polyester powder coated die-cast copper-free aluminum body, tempered safety glass, moulded silicone gasket and stainless steel screws. Built-in LED driver 220-240V 50-60Hz, with 1 x COB LED. IP65 rating.



light source	light beam options	lumen output (lm)	lumin. efficacy (lm/w)
3000°K warm-white			
cob led	 25°	900	75.00

Finish color options:

 Matt Black

Technical features



Technical data

Wattage	12 WATT
IP Rating	IP65
IK Rating	IK08
Material	High corrosion resistance die-cast copper-free aluminum body
Coating	Polyester powder coating with phosphochromating pre-finish
Light source	NR. 1 x 12W COB Bridgelux LED
Screws	Stainless steel
Transformer	Electronic power supply 220/240V 50/60Hz built-in
Gasket	Silicone rubber
Power cable	1 mt. neoprene power cable included
Glass	Tempered
Gross weight	1,25 Kg



