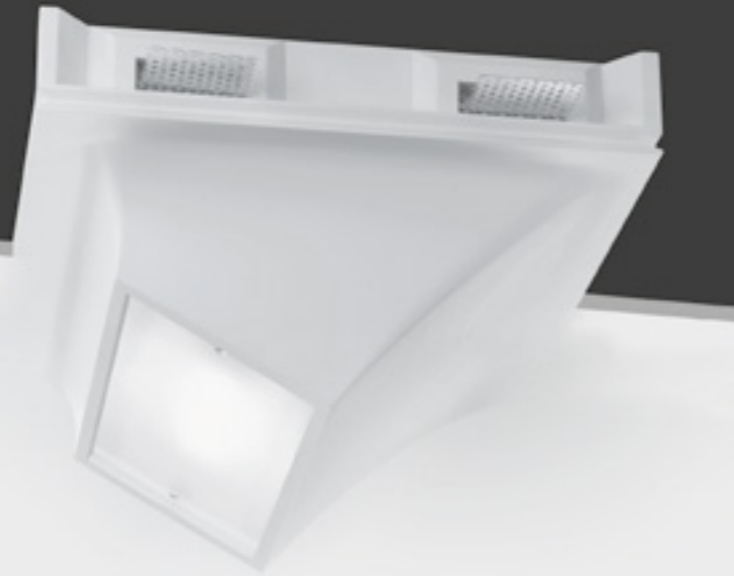


Design
Mammini+Candido



FLEXI

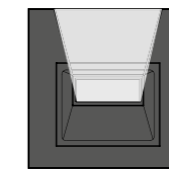
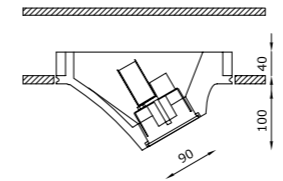
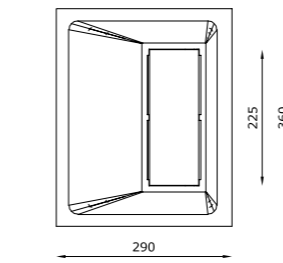


SEMI INCASSO.

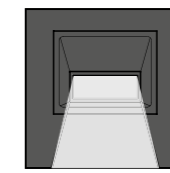
Una luce che si adatta a qualsiasi ambiente, un apparecchio dal design esclusivo che crea movimento e dinamismo: Flexi, semincasso a scomparsa totale da interni in AirCoral® per installazione in parete e soffitto di cartongesso o laterizio, una volta installato diventa parte integrante della superficie. La presenza del vetro satinato e fissato con viti bianche in policarbonato permette alla luce di diffondersi nello spazio delicatamente.

SEMI RECESSED.

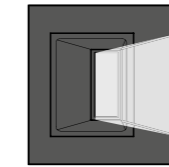
A light that adapts itself to any architecture, a fixture with an exclusive design, creating movement and dynamism: Flexi, an indoor totally disappearing semi recessed luminaire made of AirCoral®, installable on plasterboard or brick walls and ceilings, has the capacity to become an integral part of the surface it is placed on. The satin glass, fixed with white polycarbonate screws, allows the light to spread delicately within the spaces.



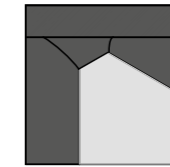
max 26W Gx24q-3
max 32W Gx24q-3
2 x 6.5W - 350 mA LED



max 26W Gx24q-3
2 x 6.5W - 350 mA LED

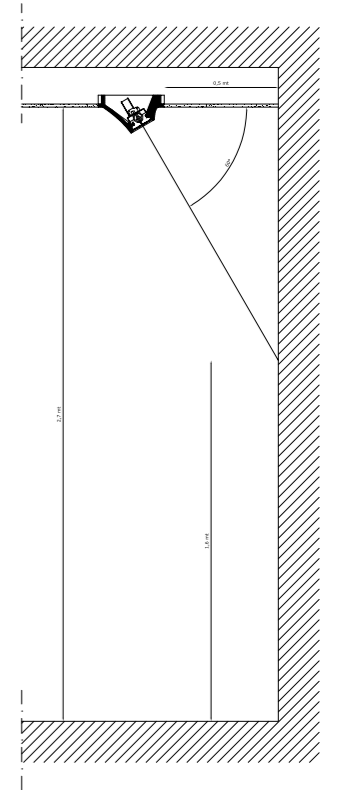


max 26W Gx24q-3
max 32W Gx24q-3
2 x 6.5W - 350 mA LED



max 26W Gx24q-3
max 32W Gx24q-3
max 150W R7s
2 x 6.5W - 350 mA LED

Recessed



TECHNICAL FEATURES

Code	6478.AC	6479.P.AC	6471.AC
Type	Downlight 60° 	Downlight 60° 	Downlight 60°
Material	AC: AirCoral®	AC: AirCoral®	AC: AirCoral®
Absorption capacity*	11.67 m²	11.67 m²	11.67 m²
Weight	7.7 Kg	7.5 Kg	7.5 Kg
Mounting	Ceiling and wall half recessed	Ceiling and wall half recessed	Ceiling and wall half recessed
IP rating	IP40	IP40	IP40
Insulation class	I	I	I
Control gear	Electronic ballast	Dimmable electronic ballast	Dimmable constant current driver
Cut out for plasterboard	300 x 370 mm	300 x 370 mm	300 x 370 mm
Lamp type	TC-TEL 	TC-TEL 	LED 350 mA
Lamp wattage	1 x 32W	1 x 32W	2 x 6.5W
Luminous efficacy	-	-	2 x 810 lm - 3000K
Light distribution	-	-	Wide beam 120°
Fitting	Gx24q-3	Gx24q-3	-
Light colour	-	-	White 3000K White 2700K 4000K (on request)
Light hole	90 x 225 mm	90 x 225 mm	90 x 225 mm
Voltage connection	220-240V · 50/60Hz	220-240V · 50/60Hz	220-240V · 50/60Hz
CRI	-	-	>90
Emergency	1 hour	-	-
Energy efficiency class	A	A	A+
Note	Extra white satin glass fixed by screws. Recessed glass 5 mm.	Extra white satin glass fixed by screws. Recessed glass 5 mm.	Extra white satin glass fixed by screws. Recessed glass 5 mm.
		Standard: dimmable switch dim. / push (on request: dimmable 1-10V or DALI).	Trailing-edge and leading-edge dimming (20 - 100%).

* The absorption capacity per m² calculated by the American organization TCNA (Tile Council of North America) is measured for an average room of 2.7 m in height and therefore expressed in m²