

Products / Planters / Bloom Planter

Bloom planter

by Eugeni Quitllet

Bloom lamp-planter collection, designed by Eugeni Quitllet for Vondom.
Metaphorically, this collection **captures the flowering stage found in nature.**

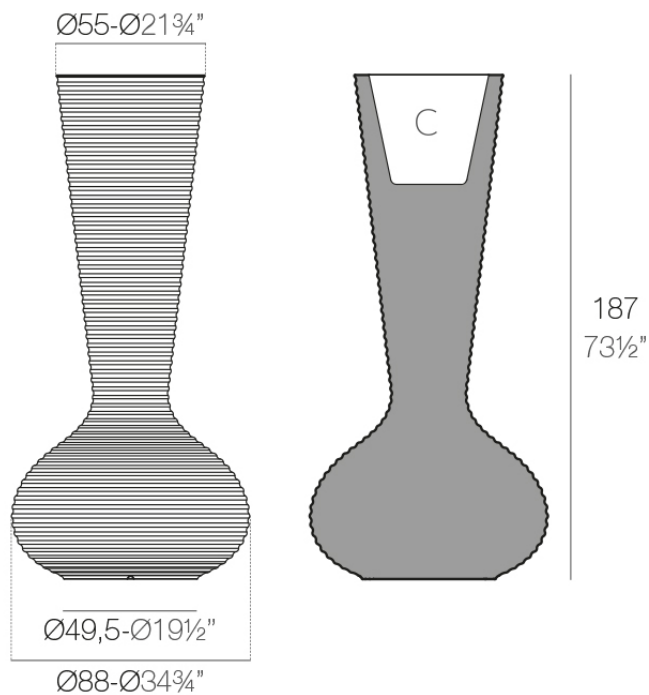


Info

Description

Made of polyethylene resin by rotational moulding. 100% Recyclable. Item suitable for indoor and outdoor use. Available in different finishes.

Weight: 35.06 Kg



BLOOM Maceta C = 10 L
 BLOOM Planter C = 2³/₄ gal

Finishes

finishes

BASIC

Ref. 65019A



purjai red



white



black



bronze



steel



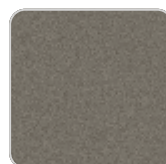
anthracite



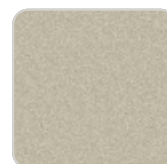
red



khaki



taupe



ecru



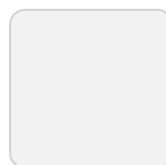
beige



orange



notte blue



ice



crema

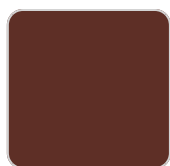


green

Matt Polyethylene

SELF-WATERING

Ref. 65019R



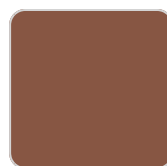
purjai red



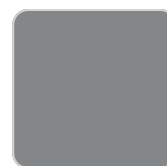
white



black



bronze



steel



anthracite



red



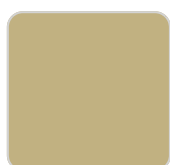
khaki



taupe



ecru



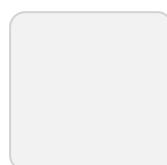
beige



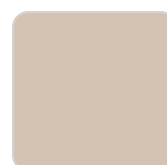
orange



notte blue



ice



crema



green

Self-watering system included in all planters except those with basic finish

LACQUERED

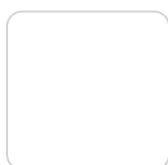
Ref. 65019F



modo green



purjai red



white



black



bronze



steel



anthracite



champany



red



khaki



taupe

ecru

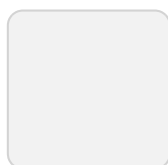
beige

Lacquered Polyethylene

lighting

LIGHT

Ref. 65019W

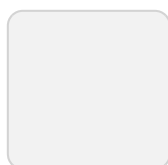


ice

White internally lit unit with LED technology. Available only in matte ice white finish.

RGBW LED

Ref. 65019L

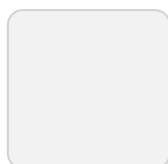


ice

Unit with internal lighting with RGBW LED technology and remote control unit for switching colors. Available only in matte ice white finish. Remote control included.

RGBW LED DMX

Ref. 65019D

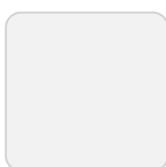


ice

Unit with internal lighting with RGBW LED technology and remote control unit for switching colors. Also controlled by DMX-1024 (wireless), enabling communication between one or more products simultaneously via the DMX transmitter (not included). There are two options to choose from: Professional XLR DMX and Home WIFI DMX. (Remote control included). Optional battery

RGBW LED BATTERY

Ref. 65019Y

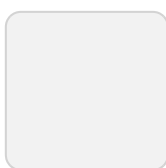


ice

Unit with internal lighting with battery-powered RGBW LED technology. Includes charger and remote control for switching colors and charger. Available only in matte ice white finish.

RGBW LED DMX BATTERY

Ref. 65019DY



ice

Unit with internal lighting with RGBW LED technology and remote control unit for switching colors. Also controlled by DMX-1024 (wireless), enabling communication between one or more products simultaneously via the DMX transmitter (not included). There are two options to choose from: Professional XLR DMX and Home WIFI DMX. (Remote control included).

Ambients

