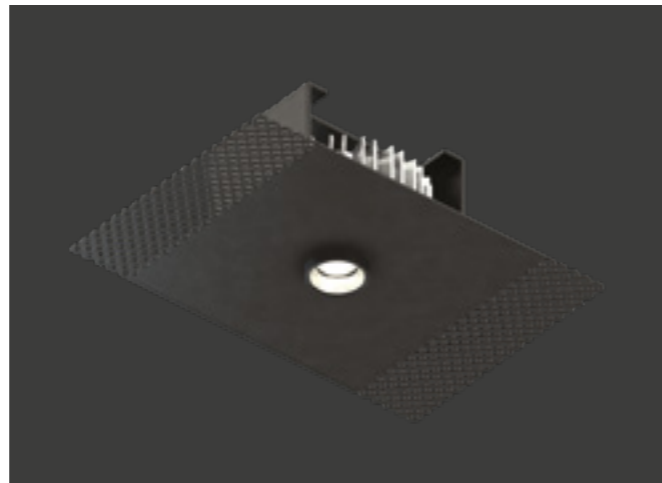
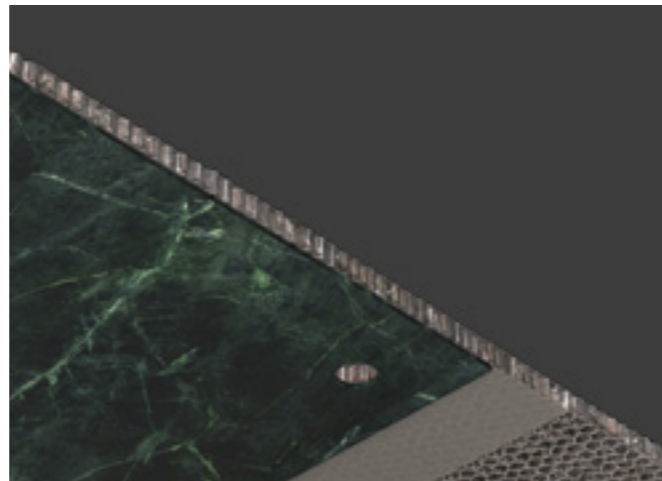


GENIUS BASIC NAKED



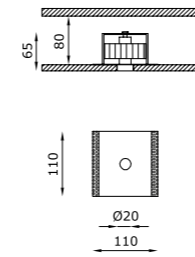
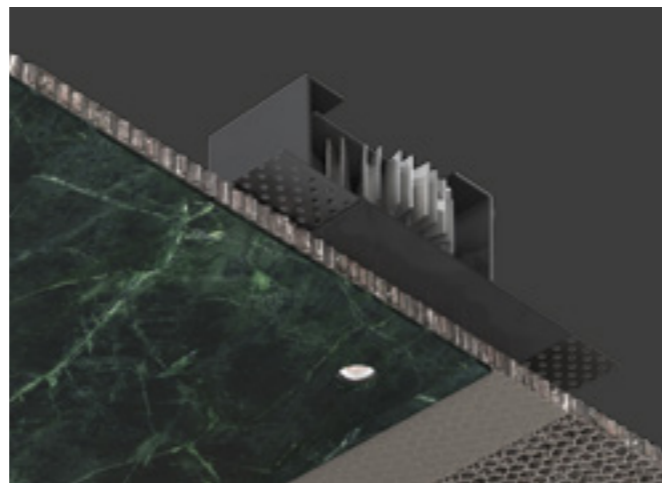
IL PIÙ COMPATTO DA INSTALLARE SU QUALSIASI MATERIALE.

Apparecchio da incasso a scomparsa totale per interni, Genius Basic Naked è una variante di Genius Basic, che unisce alle sue note caratteristiche la possibilità di integrazione superficiale in qualunque contesto e materiale. Questo nuovo Genius non solo estende la consueta affidabilità tecnica di Buzzi & Buzzi al concetto di Contract Business, ma è anche installabile su legno, cemento, specchio, marmo, moduli industriali con uno spessore da 4 mm a massimo 30 mm. Inoltre, questa versione è ancora più compatta ed offre la possibilità di installazione in soli 80 mm di intercapedine. Genius Basic Naked è la sintesi della tecnologia Buzzi & Buzzi in termini di versatilità ed efficienza: unica parte visibile è il foro di soli 20 mm, da cui eroga un flusso di 540 lm; la parte elettrica è estraibile direttamente dal foro luce, senza necessità di alcuna botola di ispezione e tantomeno di interventi invasivi in caso di manutenzione.



THE MOST COMPACT TO INSTALL ON ANY MATERIAL.

A totally recessed indoor luminaire, Genius Basic Naked is a variation of the Genius Basic, blending its characteristic notes with the possibility of surface integration in any context and material. Not only does this new Genius extend the usual technical reliability of Buzzi & Buzzi to the Contract Business concept, but it can also be installed on wood, cement, mirror, marble, industrial modules with a thickness of from 4 mm (0.16") to a maximum of 30 mm (1.18"). This version is also more compact and can be installed in a cavity of only 80 mm (3.15"). Genius Basic Naked is the synthesis of Buzzi & Buzzi technology in terms of versatility and efficiency: the only visible part is the light emission hole measuring only 20 mm (0.79"), which provides a light flow of 540 lm; the electrical part can be removed through the light hole, so there is no need for any inspection hatch, nor for invasive maintenance operations.



CODE COMPOSITION

1071 BL 4 R 24 E _ND

light colour

27	2700K
30	3000K
40	4000K

1072 BL 4 R 24 E _ND

light colour

27	2700K
30	3000K
40	4000K

example of code composition 1071 BL 4 R 24 E 30 WD

TECHNICAL FEATURES

Code	1071 XX	1072 XX
Type	Downlight 90° 	Downlight 90°
Material	Aluminum I Steel	Aluminum I Steel
Finishing	Black	Black
Weight	0.65 Kg	0.65 Kg
Mounting	Ceiling recessed	Ceiling recessed
IP rating	IP20	IP20
Insulation class	III	III
Control gear	Remote constant current electronic driver (not included)	Remote constant current electronic driver and inverter (included)
Lamp type	LED 700 mA Vf: 6.5 VDC	LED 700 mA
Lamp wattage	1 x 4.5W	1 x 4.5W
Luminous efficacy	540 lm - 3000K	540 lm - 3000K
Light distribution	Wide beam 24°	Wide beam 24°
Fitting	-	-
Light colour	White 3000K White 2700K 4000K (on request)	White 3000K White 2700K 4000K (on request)
Light hole	Ø 20 mm	Ø 20 mm
Voltage connection	By driver (optional)	220-240V · 50/60Hz
CRI	>90	>90
Emergency	-	1 hour
Note	On request available dimmable PUSH or DALI, remote installation.	On request available dimmable PUSH or DALI, remote installation.
	Suitable for installation on surfaces max 30 mm deep.	Suitable for installation on surfaces max 30 mm deep.
	This product could be ordered with IP65 protection grade (see OUTDOOR section - code 2071).	This product could be ordered with IP65 protection grade (see OUTDOOR section - code 2072).

OPTIONAL ACCESSORIES

product code	optional code	description	info
1071 XX	H8700.E	Constant current electronic driver. Remote installation	Suitable for n°3 code 1071 XX - 700 mA