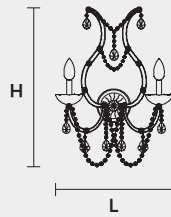


VE 938 A2

MASIERO



TRADITIONAL LIGHTING



VE 938 A2 MT TRADITIONAL VERSION

H 50 cm 19,69"
L 30 cm 11,81"
SP 22 cm 8,66"

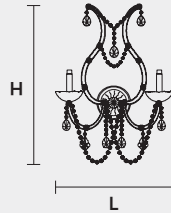
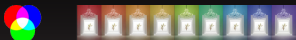
2 x E14 x 40 W max
Triac Dimmable

Lighting system: Traditional E14 lightbulbs (not included)

Frame: Chrome or gold plated metal covered by transparent glass

Lampshades: No lampshades included

Pendants: Transparent



VE 938 A2 RW RGB-W LED VERSION

H 50 cm 19,69"
L 30 cm 11,81"
SP 25 cm 9,84"

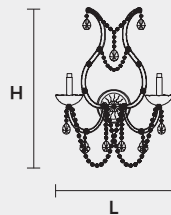
2 x RGB-W LED SOURCES (driver included)
660 lm at 3000 K - CRI>85 - 8 W

Controlled by: DMX or Masiero Smart Light App

Frame: Chrome or gold plated metal covered with transparent glass

Lampshades: No lampshades included

Pendants: Transparent



VE 938 A2 DW DYNAMIC WHITE LED VERSION

H 50 cm 19,69"
L 30 cm 11,81"
SP 25 cm 9,84"

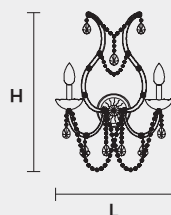
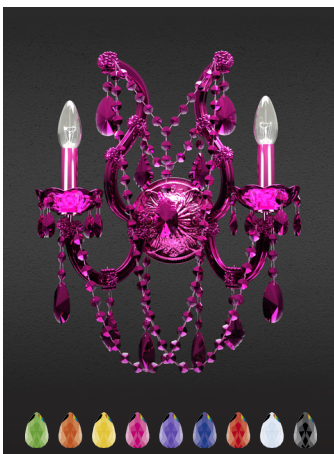
2 x DW LED SOURCES (driver included)
DYNAMIC White from 2700 K to 6500 K
980 lm max at 4700 K - CRI>85 - 8 W

Controlled by: DMX or Masiero Smart Light App

Frame: Chrome or gold plated metal covered with transparent glass

Lampshades: No lampshades included

Pendants: Transparent



VE 938 A2 CG COLOURED GLASS VERSION

H 50 cm 19,69"
L 30 cm 11,81"
SP 22 cm 8,66"

2 x E14 x 40 W max
Triac Dimmable

Lighting system: Traditional E14 lightbulbs (not included)

Frame: Painted metal covered with painted glass

Lampshades: No lampshades included

Pendants: Color painted glass

Available in: Green/ Orange/ Yellow/ Purple/ Lilac/ Blue/ Red/ White/ Black

