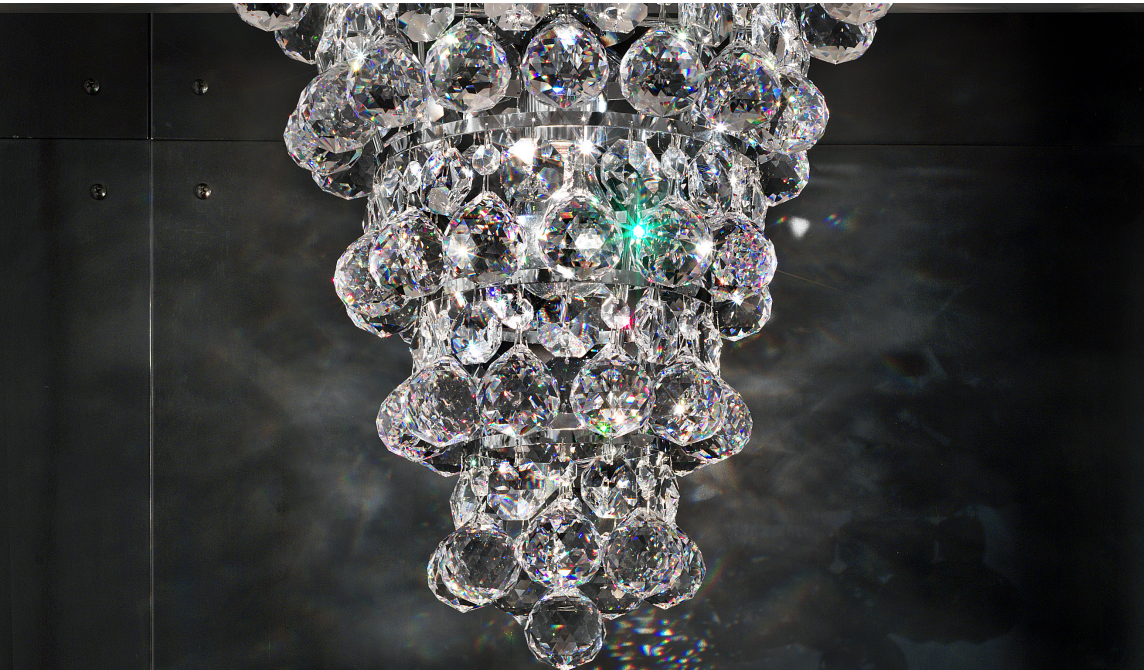


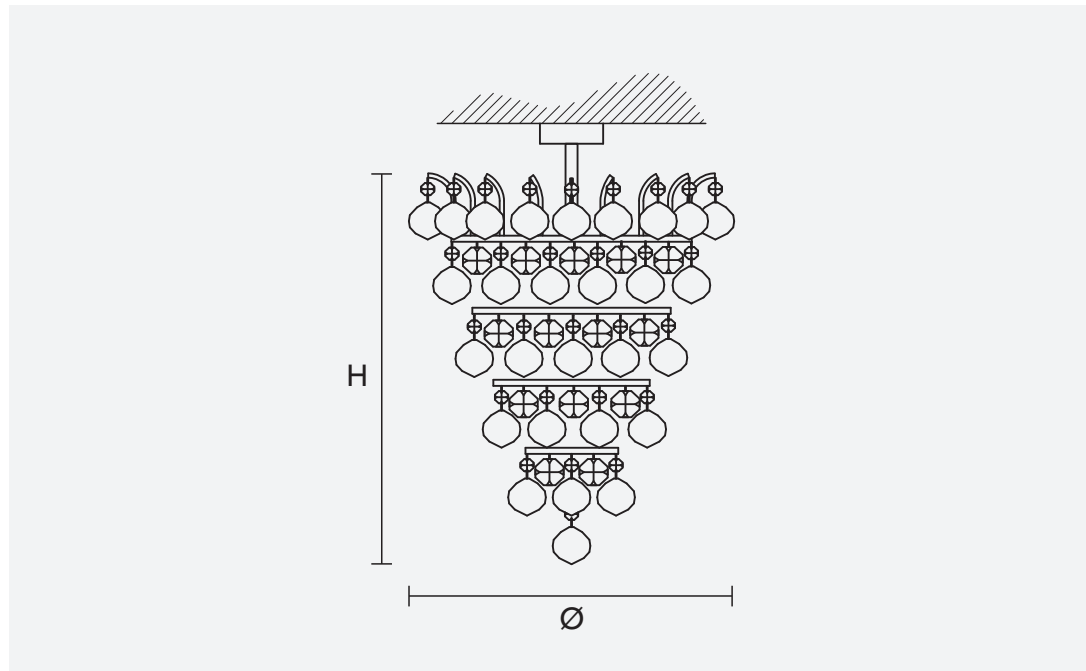
# IMPERO-DECO VE 810 PL1

Design by: Studio Stile Masiero



Telaio in metallo cromato, pendagli in cristallo.


Chrome plated metal frame, crystal pendants.



H 40 cm  
15.74"

Ø 35 cm  
13.77"

Peso: 7 kg

 1 x E27 x 60W max  
Incandescenza/Incandescent



## MATERIALI MATERIALS

### CUT CRYSTAL

Pendagli in cristallo trasparente molato.

Pendants in transparent cut crystal.

### SWAROVSKI® ELEMENTS

Pendagli in cristallo trasparente SWAROVSKI® ELEMENTS.

Pendants in transparent SWAROVSKI® ELEMENTS crystal.

### HALF CUT GLASS

Pendagli in vetro semi-molato.

Half cut glass pendants.