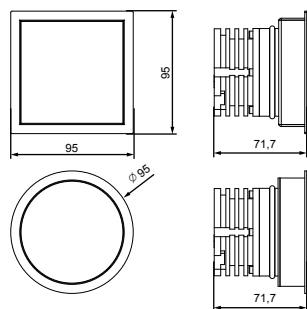


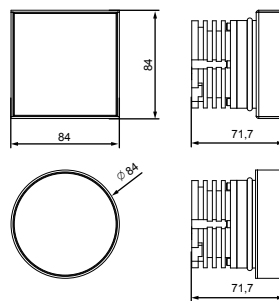
- the fixture is IP67 rated
- the fixture is water- and dust tight
- water should be able to flow of the product once installed
- when installed in solid ground (with or without matchbox) additional drainage must be provided (for example: a bed of gravel)
- make sure the coating (of the housing or other parts) is not damaged during installation or maintenance work: the damage can result in corrosion after contact with water
- the fixture should not be placed in road lanes, it should not be exposed to strain due to braking, acceleration and change of direction
- in order for the product to take pressure load, a proper foundation for the fixture should be provided by the client
- it is recommended to use the fixture in ground with a pH value between 5 and 8
- client should under no circumstances open the fixture themselves, in case of a problem, the fixture needs to be sent back to Kreon

1 precaution

mini up outdoor

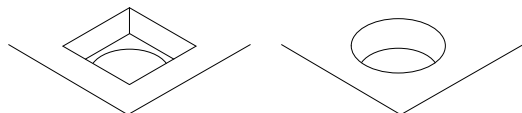


mini up in line outdoor



name	reference	voltage/current
mini up outdoor square diffuser	KR952101/KR952102	12V/700mA
mini up outdoor square anti-glare	KR952121/KR952122	12V/700mA
mini up outdoor square wallwasher	KR952171/KR952172	12V/700mA
mini up outdoor circular diffuser	KR952601/KR952602	12V/700mA
mini up outdoor circular anti-glare	KR952621/KR952622	12V/700mA
mini up outdoor circular wallwasher	KR952671/KR952672	12V/700mA
mini up-il outdoor square diffuser	KR952301/KR952302	12V/700mA
mini up-il outdoor square anti-glare	KR952321/KR952322	12V/700mA
mini up-il outdoor square wallwasher	KR952371/KR952372	12V/700mA
mini up-il outdoor circular diffuser	KR952801/KR952802	12V/700mA
mini up-il outdoor circular anti-glare	KR952821/KR952822	12V/700mA
mini up-il outdoor circular wallwasher	KR952871/KR952872	12V/700mA

2 dimensions



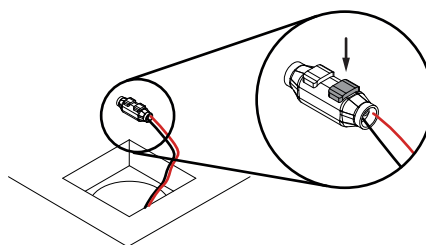
Please make sure that main voltage is disconnected before proceeding!

name	reference
matchbox square	KR752103
matchbox square for gear incl	KR752603

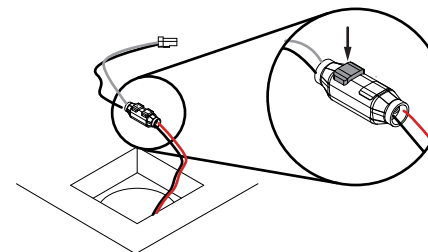
3 installation with matchbox

in case of installation with matchbox

NOTE:  
mind that the gear cannot be placed inside the matchbox and that it has to be positioned at a distance (where it still can be reached in case of a problem)



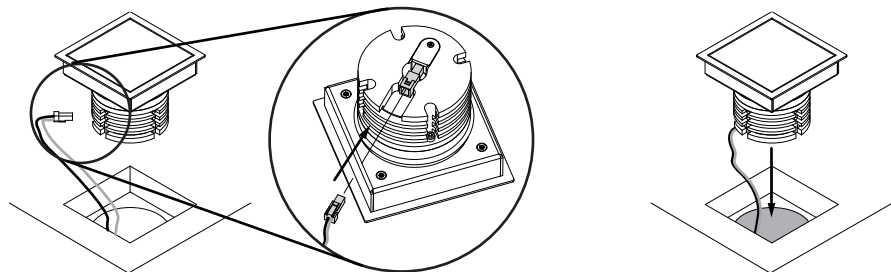
place the cable coming from the gear in the connector that's delivered with the fixture.  
Close the connector on the side of the cables by applying pressure with a pliers. Don't close the other side yet!



place the cable coming from the KR774005 (female connector + cable) on the other side of the blue connector.  
Close the connector on that side by applying pressure with a pliers.

NOTE  
Mind the polarity:  
KR774005 - female connector with cable  
white = +  
black = -  
+ of the connector must match + of the gear  
- of the connector must match - of the gear

installation with matchbox

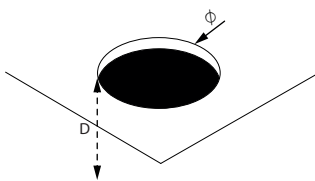
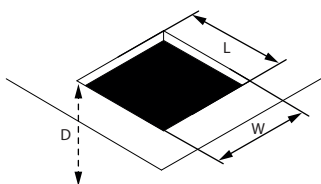


installation with matchbox

click the female connector in the male connector at the bottom of the fixture.

push the fixture in the matchbox

in case of installation in hollow floor

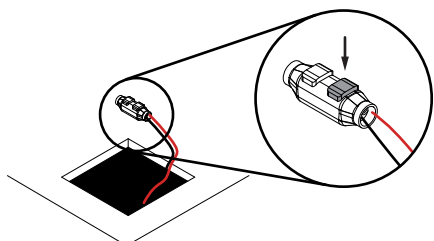


name	reference	LxWxD / ØxD
mini up outdoor square diffuser	KR952101/KR952102	85 (+2mm, -0mm) X 85 (+2mm, -0mm) X 75
mini up outdoor square anti-glare	KR952121/KR952122	85 (+2mm, -0mm) X 85 (+2mm, -0mm) X 75
mini up outdoor square wallwasher	KR952171/KR952172	85 (+2mm, -0mm) X 85 (+2mm, -0mm) X 75
mini up outdoor circular diffuser	KR952601/KR952602	Ø 85 (+2mm, -0mm) X 75
mini up outdoor circular anti-glare	KR952621/KR952622	Ø 85 (+2mm, -0mm) X 75
mini up outdoor circular wallwasher	KR952671/KR952672	Ø 85 (+2mm, -0mm) X 75
mini up-il outdoor square diffuser	KR952301/KR952302	85 (+2mm, -0mm) X 85 (+2mm, -0mm) X 72
mini up-il outdoor square anti-glare	KR952321/KR952322	85 (+2mm, -0mm) X 85 (+2mm, -0mm) X 72
mini up-il outdoor square wallwasher	KR952371/KR952372	85 (+2mm, -0mm) X 85 (+2mm, -0mm) X 72
mini up-il outdoor circular diffuser	KR952801/KR952802	Ø 85 (+2mm, -0mm) X 72
mini up-il outdoor circular anti-glare	KR952821/KR952822	Ø 85 (+2mm, -0mm) X 72
mini up-il outdoor circular wallwasher	KR952871/KR952872	Ø 85 (+2mm, -0mm) X 72

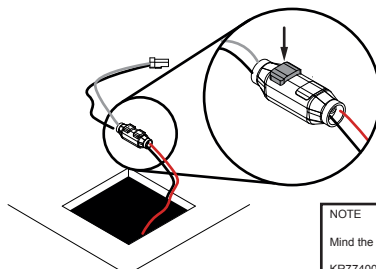
installation in hollow floor

electric connection

NOTE:  
use a compatible driver with the correct required protection class  
mind the dimensions of the cut-out + depth in the floor! ► if the dimensions of the driver are too big to fit through the cut-out in the floor, place the driver at a distance



place the cable coming from the gear in the connector that's delivered with the fixture.  
Close the connector on the side of the cables by applying pressure with a pliers. Don't close the other side yet!



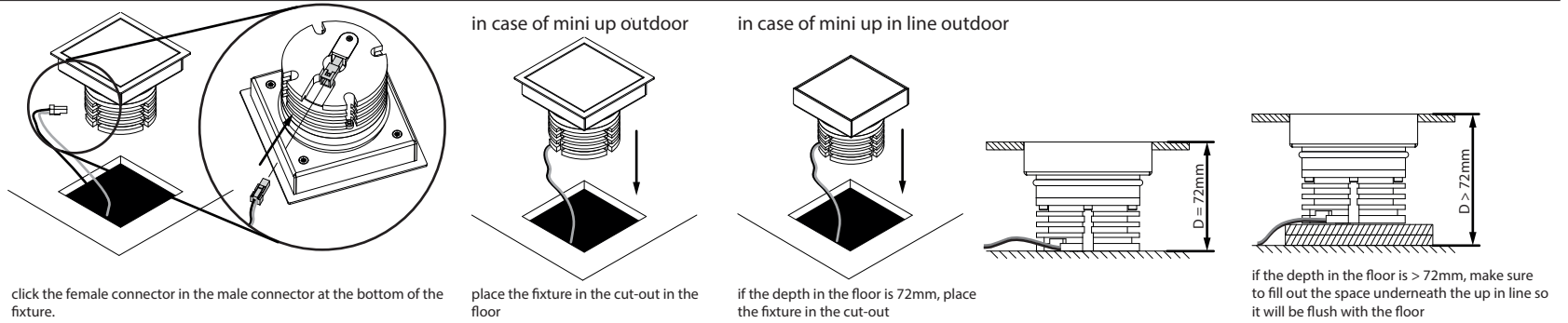
place the cable coming from the KR774005 (female connector + cable) on the other side of the blue connector.  
Close the connector on that side by applying pressure with a pliers.

NOTE  
Mind the polarity:  
KR774005 - female connector with cable  
white = +  
black = -  
+ of the connector must match + of the gear  
- of the connector must match - of the gear

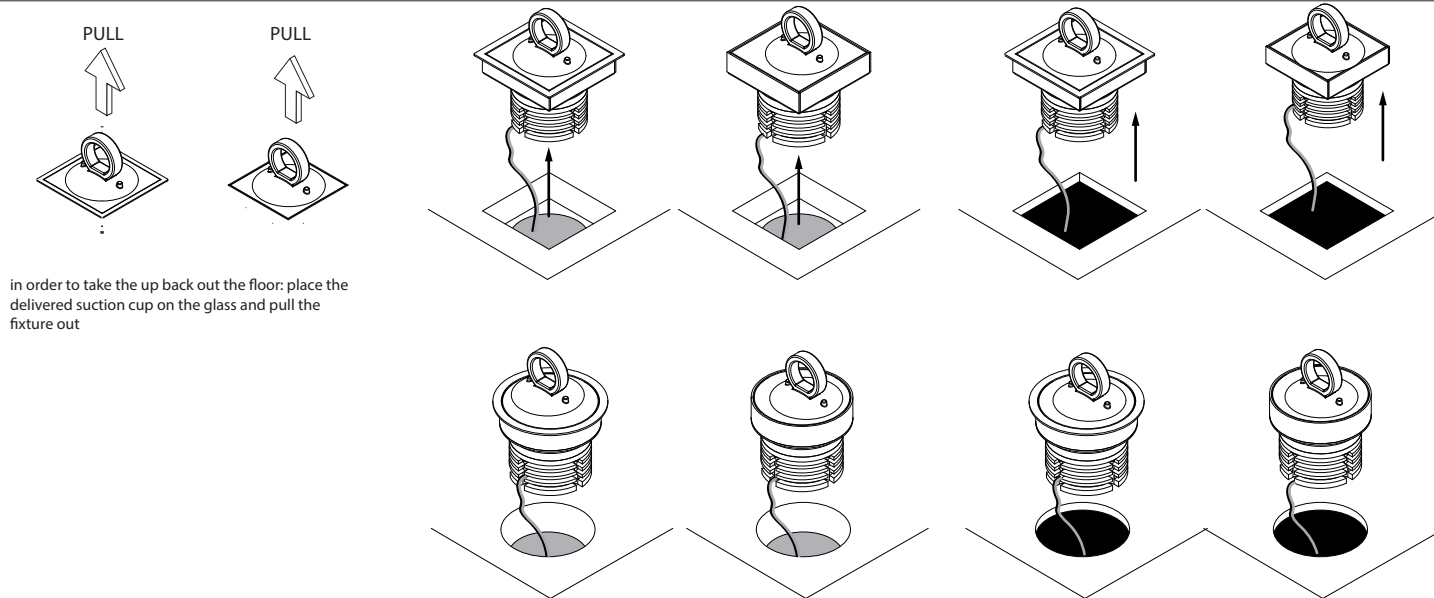
name	reference	voltage/current
mini up outdoor square diffuser	KR952101/KR952102	12V/700mA
mini up outdoor square anti-glare	KR952121/KR952122	12V/700mA
mini up outdoor square wallwasher	KR952171/KR952172	12V/700mA
mini up outdoor circular diffuser	KR952601/KR952602	12V/700mA
mini up outdoor circular anti-glare	KR952621/KR952622	12V/700mA
mini up outdoor circular wallwasher	KR952671/KR952672	12V/700mA
mini up-il outdoor square diffuser	KR952301/KR952302	12V/700mA
mini up-il outdoor square anti-glare	KR952321/KR952322	12V/700mA
mini up-il outdoor square wallwasher	KR952371/KR952372	12V/700mA
mini up-il outdoor circular diffuser	KR952801/KR952802	12V/700mA
mini up-il outdoor circular anti-glare	KR952821/KR952822	12V/700mA
mini up-il outdoor circular wallwasher	KR952871/KR952872	12V/700mA

installation in hollow floor

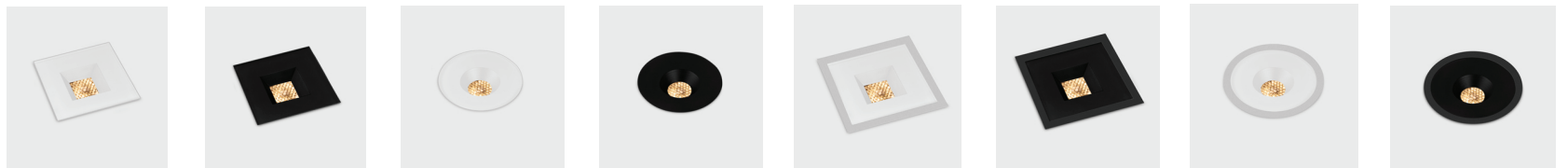
## installation in hollow floor



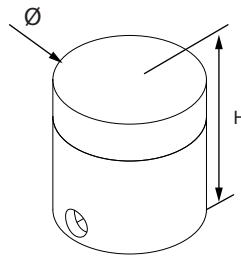
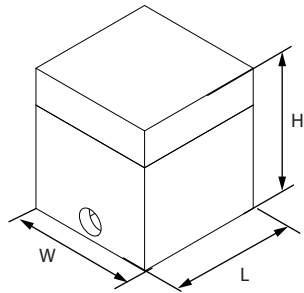
## removal of up outdoor



## pictures



<p>technics</p>	<ul style="list-style-type: none"> <li>- the fixture is IP67 rated</li> <li>- the fixture is water- and dust tight</li> <li>- water should be able to flow of the product once installed</li> <li>- when installed in solid ground (with or without matchbox) additional drainage must be provided (for example: a bed of gravel)</li> <li>- make sure the coating of the fixture (of the housing or other parts of the fixture) is not damaged during installation or maintenance work: the damage can result in corrosion after contact with water</li> <li>- the fixture should not be placed in road lanes, it should not be exposed to strain due to braking, acceleration and change of direction</li> <li>- in order for the product to take pressure load, a proper foundation for the fixture should be provided by the client</li> <li>- it is recommended to use the fixture in ground with a pH value between 5 and 8</li> <li>- client should under no circumstances open the fixture themselves, in case of a problem, the fixture needs to be send back to Kreon</li> </ul>
<p>1 precaution</p>	



name	reference	WxLxH - ØxH
matchbox square	KR752103	85x85x95
matchbox circular	KR752603	Ø85x95

Please make sure that main voltage is disconnected before proceeding! ⚡

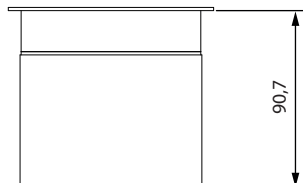
**THE POLYSTYRENE MOLD IS NECESSARY TO COMPLETE THE INSTALLATION, DON'T THROW IT AWAY!**

<p>2 dimensions</p>	
---------------------	--

### IMPORTANT NOTE - HEIGHT OF MATCHBOX/POSITION OF THE PRODUCT

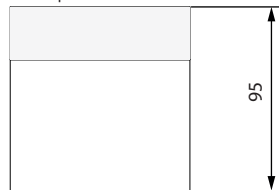
The complete height (and therefore the depth in the ground) of the product is determined by the matchbox + fixture itself (which can only be installed after the matchbox is poured in and has dried)

#### IN CASE OF MINI UP OUTDOOR SQUARE

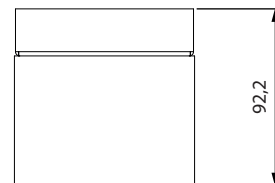


height of the matchbox + mini up outdoor fixture = 90,7mm

Mind the height of the matchbox including the polystyrene mold is 95mm. So the top of that mold cannot be used as a reference for the depth of the floor.

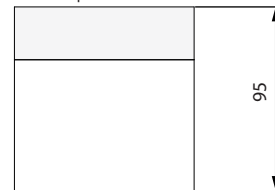


#### IN CASE OF MINI UP OUTDOOR CIRCULAR

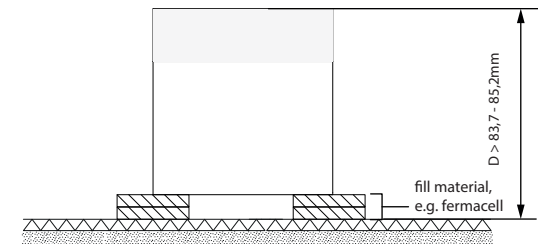


height of the matchbox + mini up outdoor fixture = 92,2mm

Mind the height of the matchbox including the polystyrene mold is 95mm. So the top of that mold cannot be used as a reference for the depth of the floor.



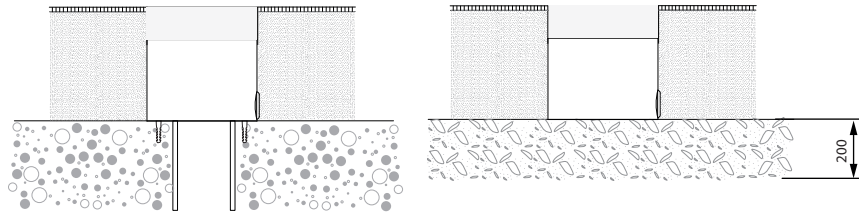
Take into account that if the floor depth exceeds the height of 90,7-92,2mm it will be necessary to fill out from underneath the matchbox until the exact height is reached. Make sure not to close the large hole at the bottom of the matchbox



<p>remark</p>	
---------------	--

## IMPORTANT NOTE - DRAINAGE FOR OUTDOOR USE

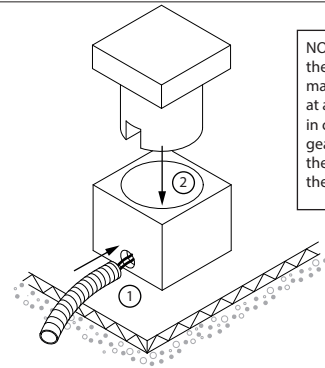
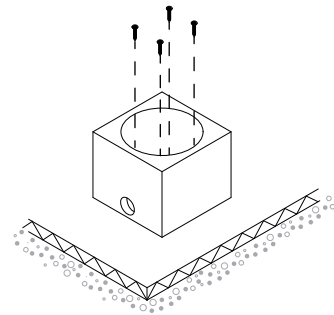
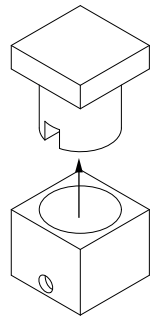
Proper drainage must be provided in the foundation so that water can drain of



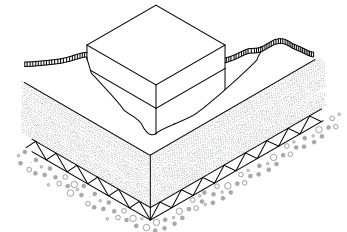
3 installation

in case of concrete foundation  
provide a tube which can drain the water of

in case of soil  
provide a 200mm layer of gravel underneath the matchbox  
to drain the water of



NOTE:  
there's no room for the gear inside the matchbox, so the gear needs to be placed at a distance, where it still can be reached in case of a problem. Max. distance between gear and fixture = 10m  
the cable entering the matchbox must be for the connection between gear and fixture



installation

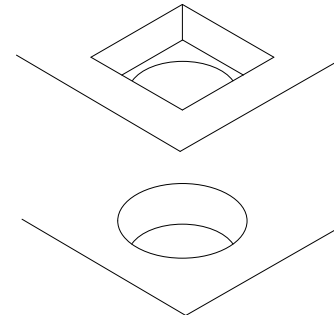
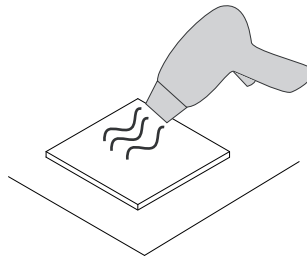
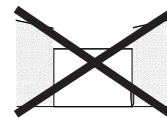
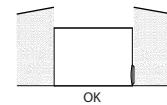
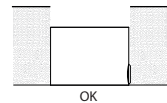
pull the foam out of the matchbox  
don't throw it away!!

fix the matchbox through the holes (3,5mm) on the floor fill up if necessary (see previous page)

use a 5/8" (16mm) tube for the cabling,  
put it in the hole of the matchbox (push it through the hole for ± 10mm). place the foam back afterwards

pour the floor and finish the top

NOTE



remove the polystyrene mold by pulling it out or melting it  
(use for instance a blow torch)

for installation of the fixture, see manual included  
with the fixture (KR8520002011)

installation

kreon nv

Industrieweg Noord 1152  
B 3660 Opglabbeek  
Belgium

Tel +32 89 81 97 80  
Fax + 32 89 81 97 90

www.kreon.com  
mailbox@kreon.be

KR8520002012  
revision date: 04/07/2014

Sheet 2/2