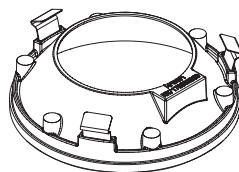
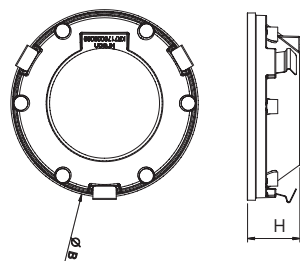


technics



Name

Louvre aplis in line 40
 Louvre IP44 aplis in line 40
 Louvre aplis in line 80
 Louvre IP44 aplis in line 80
 Louvre aplis in line 120
 Louvre IP44 aplis in line 120

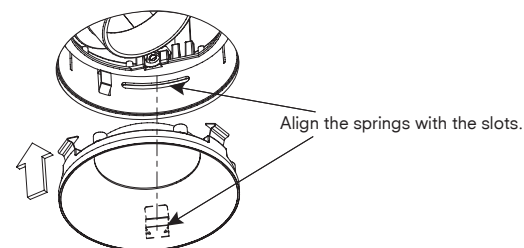
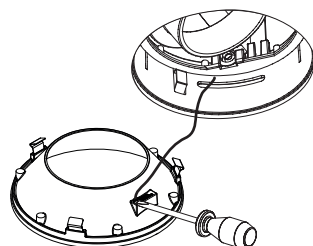
Reference

KR707106 /KR707122
 KR70730x
 KR717106 /KR717122
 KR717306 /KR717302
 KR707206 /KR707222
 KR707406 /KR707402

øB x H

40 x 11,3
 40 x 13,3
 80 x 22,5
 80 x 22,5
 120 x 34
 120 x 34

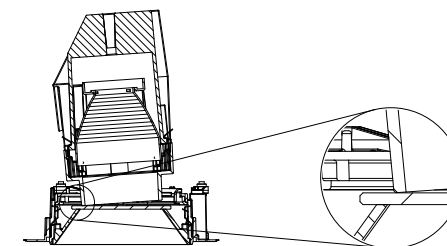
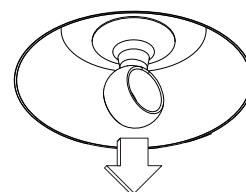
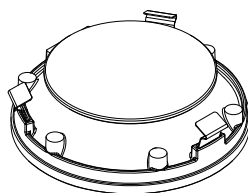
1 dimensions



2 installation

In case of 120, fix the fall safety cable with added screw to the louvre.

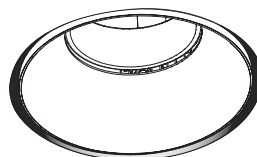
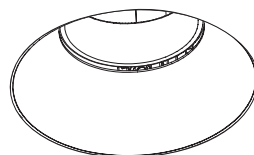
Insert the louvre in the plasterkit.



In case of IP44 louvre.

remove IP44 louvre with suction cup

mod 80/120: led module can not rotate when the IP44
 louvre is installed
 mod 40: IP louvre only compatible with downlight.



In case of 40, 80 and 120 version:
 Result without shadow gap, when plasterkit
 KR707104, KR717104 or KR707204 is used.

In case of 80 and 120 version:
 Result with shadow gap, when plasterkit
 KR717108 or KR707208 is used.

