

Products / Dining Tables / Frame Aluminium Table 200x100x74

Frame aluminium table 200x100x74

by Ramón Esteve

Frame, outdoor collection by Ramon Esteve, comes from generating serene and timeless shapes using the framework as elementary geometry. The endless possibilities offered by the material using advanced technology, was the motivation to explore the limits.

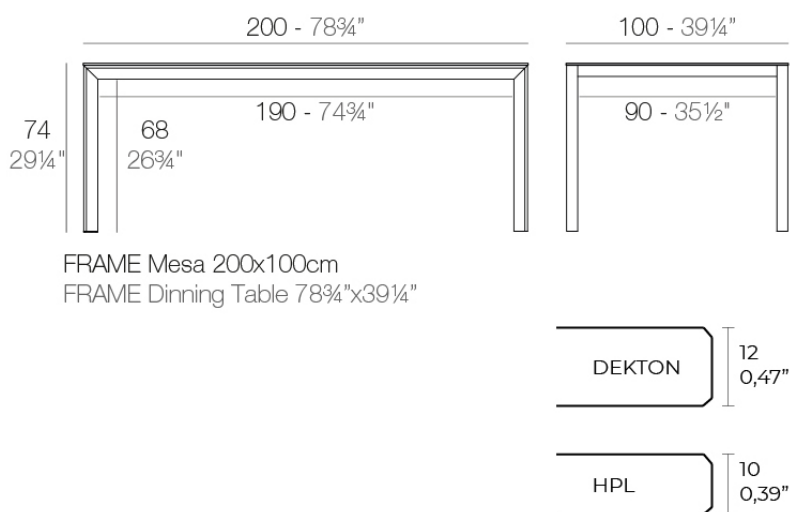


Info

Description

Extruded aluminum with cast lacquered aluminum base. HPL Table top ó Dekton Table top. Item suitable for indoor and outdoor use. HPL Table top.

Weight: 39.15 Kg



Finishes

finishes

LACQUERED

Ref. 54241F



bronze



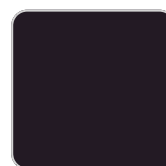
modo green



purjai red



british gray



notte blue



traffic gray



pickle



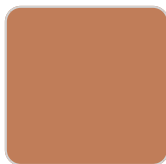
crema



almond



castoro fiber



melon



white



black



ecru

Lacquered aluminium profile.

LACQUERED + SOLID CORE

Ref. 54241FB



bronze



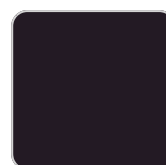
modo green



purjai red



british gray



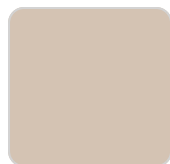
notte blue



traffic gray



pickle



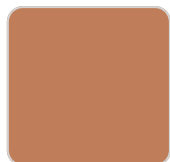
crema



almond



castoro fiber



melon



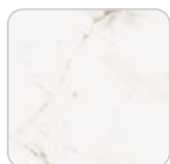
white



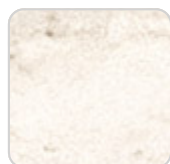
navy

Lacquered aluminium profile.

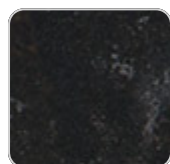
LACQUERED + DEKTON
Ref. 54241FM



entzo



danae



kelya

Lacquered aluminium profile.

Ambients

