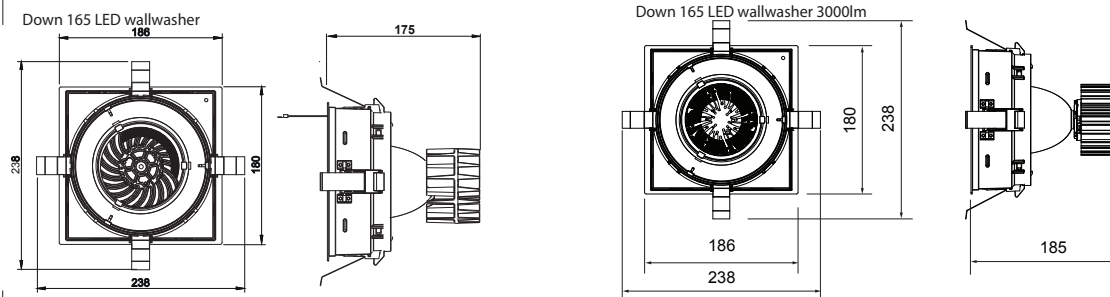


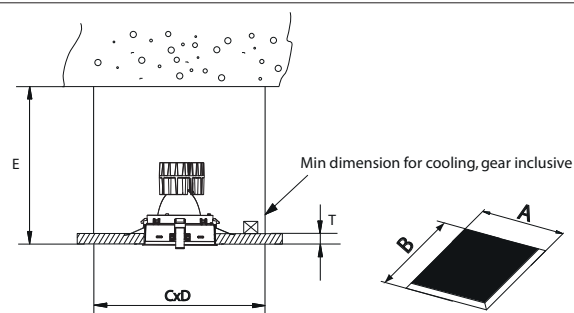
technics



Name	Reference	current
Down 165 LED wallwasher	KR94733x-X-XXXX	700mA
Down 165 LED wallwasher 3000lm	KR94744x-XXXX	1050mA

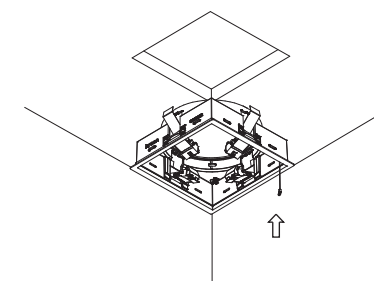
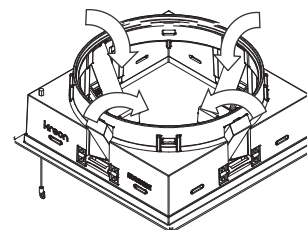
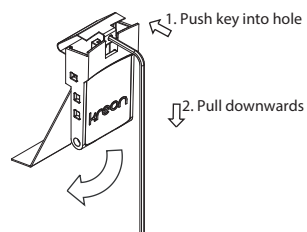
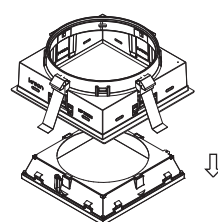
The luminaire must not under any circumstances be covered with heat insulating covers or similar materials. Cables must not touch the luminaire housing. The connection cable must be routed so that it does not touch the lamp when the luminaire is tilted.

1 dimensions



Name	Reference	A x B	CxD	E _{min}	T _{min} -T _{max}
Down 165 LED	KR94733x-X-XXXX	173x173	300x300	200	
Down 165 LED 3000lm	KR94744x-XXXX	173x173	300x300	210	
Plasterboard thickness					9-26

2 cut out

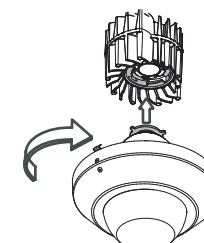
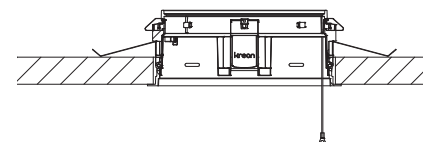
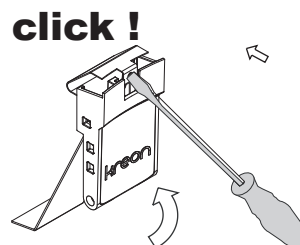


3 installation

Remove louver

Open spring mechanism (4x) with an allen key.

Insert installation box in the hole.



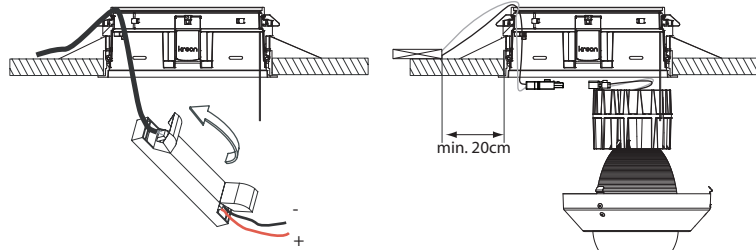
installation

Close spring mechanism (4x).

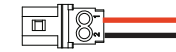
Fix the spring with a tool.

install the reflector on the LED module. the reflector is fixed by turning it on the LED, underneath the bajonet ring

Please make sure that main voltage is disconnected before proceeding!



male connector is already wired as follows



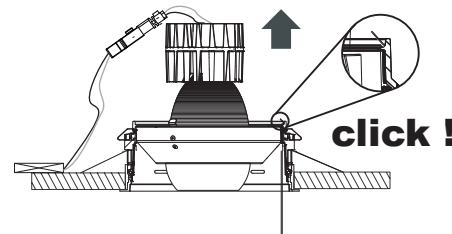
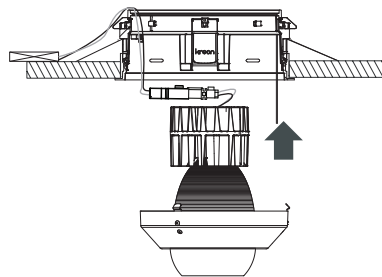
make sure the female connector is wired in the same way

2 = black
1 = red

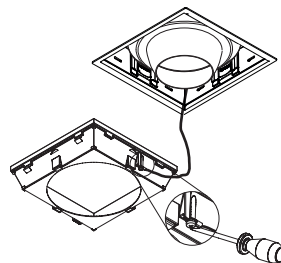
installation

install the correct gear with strain relief on the hollow ceiling

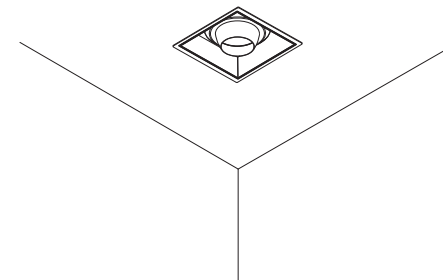
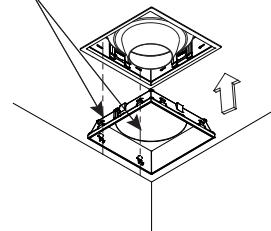
important: always check the polarity!!
+ = red wire
- = black wire



installation



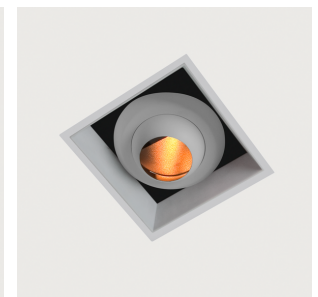
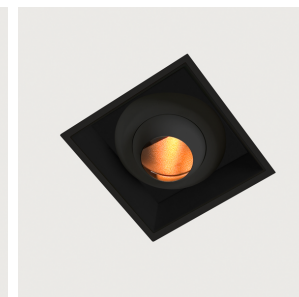
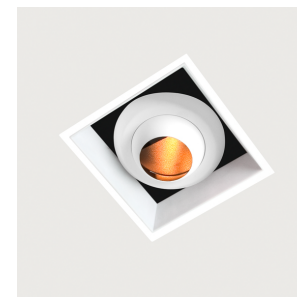
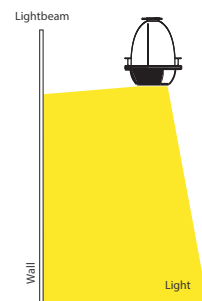
Align the springs with the slots.



installation

Fix the fall safety cable with added screw to the louvre.

Insert the louvre in the plasterkit.



4 picture