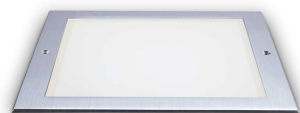


General info

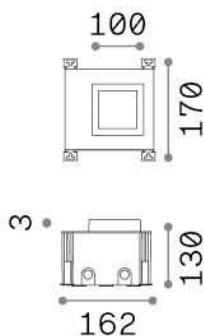
Outdoor - Recessed lights



Ean	8021696325644
Item	TAURUS PT D10 WIDE SQUARE
Installation	Recessed lights
Guarantee	5 years
Gross weight	1.1 kg
Volume	-

Technical info

Net weight	1.1 kg
Insulation class	I
Protection index	IP67
Compliance	CE
Operating temperature	-15° ~ +45 °C
Dimmer	NO, On-Off
Power output	220-240 V AC 50/60 Hz
Power supply	In-built, included Replaceable (by qualified operators only), electronic
Recessed specifications	Ø 92 - h. ≥ 110 , 5-30
Adjustability	vert. +/-30°



Source info

Integrated source	Integrated LED module
Replaceable source	Replaceable (by qualified operators only)
Power	6 W
Emission	Direct
Max consumption	max 6,00 W
Features LED	LED SMD BRIDGELUX
CCT LED	3000 K
Duration LED (t. 25°C)	50000 h
CRI	> 80
Light beam	114°
Light beam flux	620 lm
Useful light flux	180 lm