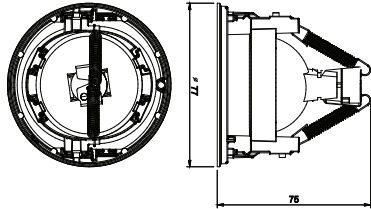


# kreon

technics

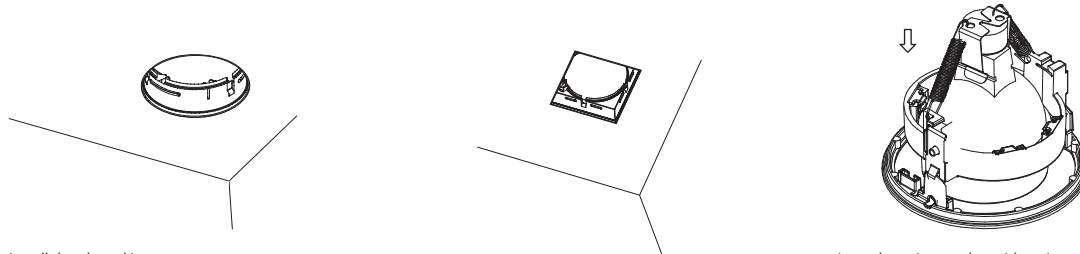
Only LED lamp allowed, no halogen!  
Lamp not included.



Name	Reference	Voltage ⚡	B (Soora lamp added)	Max wattage
Module 80 dir LED MR16 QRCB51 LED	KR917803	12V	73	15 W
Module 80 dir LED par16 Qpar16 LED	KR917843	240V	94	15 W
Module 80 fixed LED MR16 QRCB51 LED	KR917233	12V	73	15 W
Module 80 fixed LED par16 Qpar16 LED	KR917253	240V	94	15 W

The luminaire must not under any circumstances be covered with heat insulating covers or similar materials.  
Cables must not touch the luminaire housing.  
The connection cable must be routed so that it does not touch the lamp when the luminaire is tilted.

1 dimensions

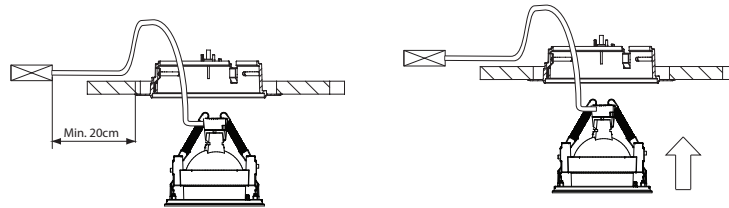


Please make sure that main voltage is disconnected before proceeding! ⚡

2 installation

To install the plasterkit.  
See installation manual KR8170001755 or KR8170001758.

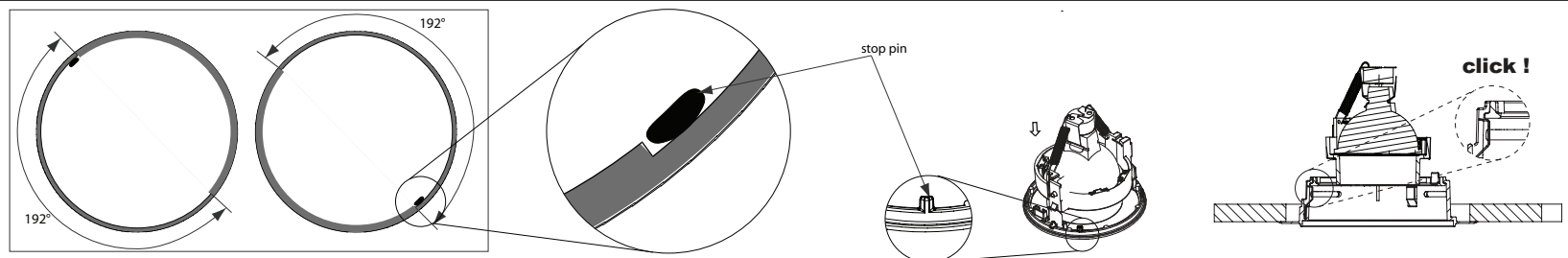
Insert lamp into socket with springs.



3 installation

In case of transformer or ballast.

Put the assembly in the plasterkit.

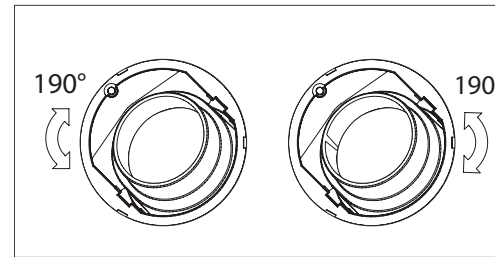
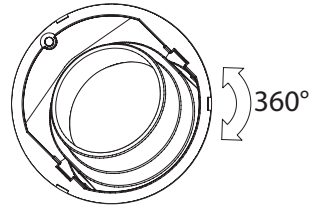
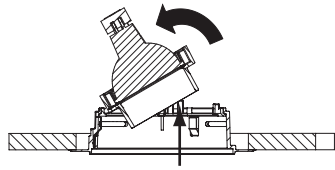


4 installation

In case of directional and the double version, place the module so the stop pin is located in the indicated area. (192°)

technics

In case of a directional part



5 installation

Push at the filterholder to rotate inner part manually.

Turn inner part manually.

In case of the double version 2x190°

6 installation

To install the louvre see manual KR8170001761 or KR8170001762.

