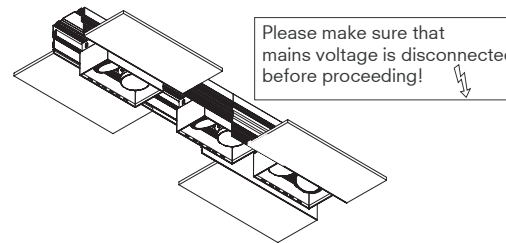
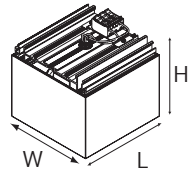


technics

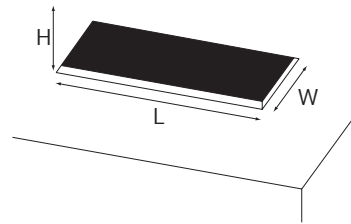


prologe in-Dolma

prologe in-Line

Name	Reference	L x W x H
Prologe 145 Single directional QT12-ax	kr98512x / kr98571x	140 x 140 x 175
Prologe 145 Single directional AR111/QR-LP111	kr98511x / kr98572x	140 x 140 x 175
Prologe 145 Single directional AR111	kr98510x / kr98570x	140 x 140 x 175
Prologe 145 Double directional QT12-ax	kr98522x / kr98581x	280 x 140 x 175
Prologe 145 Double directional AR111/QR-LP111	kr98521x / kr98582x	280 x 140 x 175
Prologe 145 Double directiona AR111	kr98520x / kr98580x	280 x 140 x 175

1 dimensions

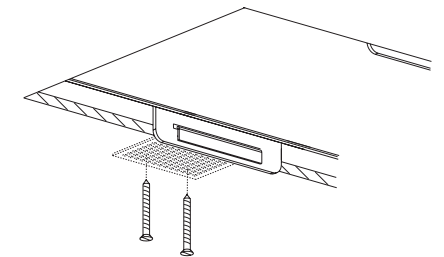
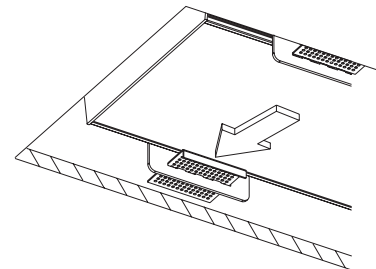
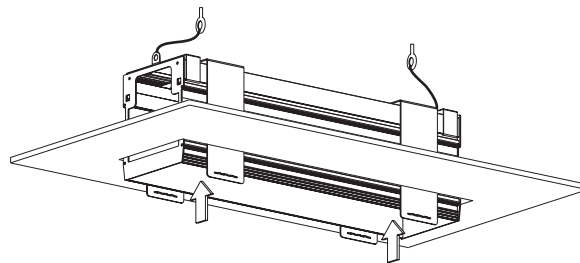


Name	Reference	L x W x H
Custom length in-Line Profile		(L+10mm) x 170 x 245
Custom length in-Dolma Profile		(L+10mm) x 170 x 190

2 cut out

provide correct cut out in plasterboard

Plasterboard thickness from 9mm to 25mm

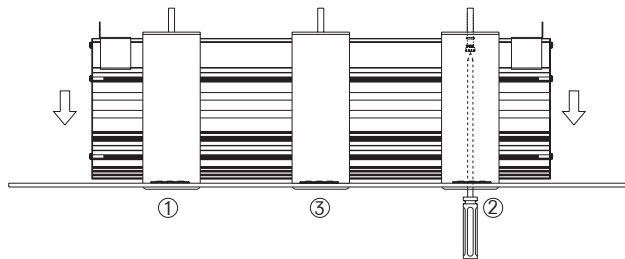


3 installation

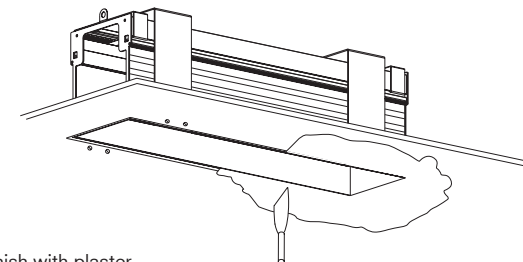
place profile into cutout (connect safety brackets)

slide perforated brackets into gap

and fix with plasterboard screws

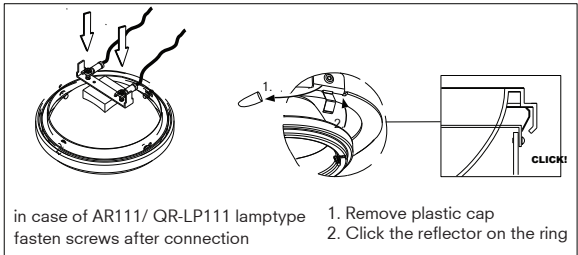


lower profile by turning adjusting screws in the correct order



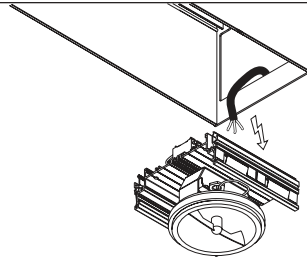
finish with plaster
kreon recommends polyester filler 2K

4 installation



in case of AR111/ QR-LP111 lamptype
fasten screws after connection

1. Remove plastic cap
2. Click the reflector on the ring

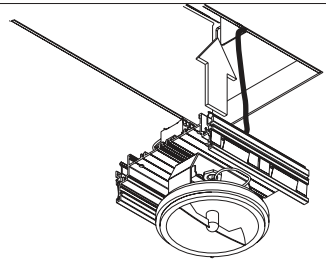
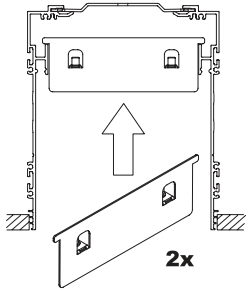
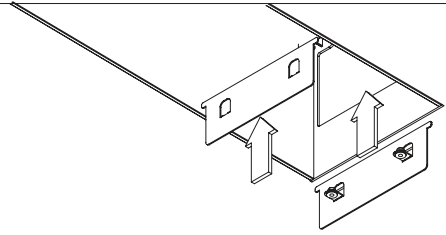


apply correct voltage
* only use single core cables

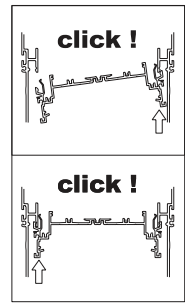
Name	Reference	Voltage ⚡
Prologe 145 Single directional QT12-ax	kr98512x / kr98571x	230 VDC / 12 VDC
Prologe 145 Single directional AR111/QR-LP111	kr98511x / kr98572x	230 VDC / 12 VDC
Prologe 145 Single directional AR111	kr98510x / kr98570x	230 VDC / 20 VDC
Prologe 145 Double directional QT12-ax	kr98522x / kr98581x	230 VDC / 12 VDC
Prologe 145 Double directional AR111/QR-LP111	kr98521x / kr98582x	230 VDC / 12 VDC
Prologe 145 Double directiona AR111	kr98520x / kr98580x	230 VDC / 20 VDC

5 connection

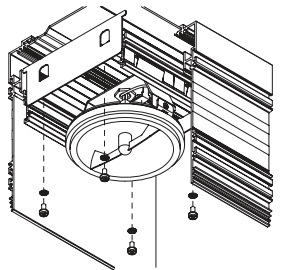
Install lamps in case of lamp exclusive



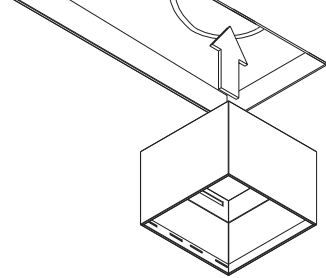
click chassis in profile, between
the fastening brackets



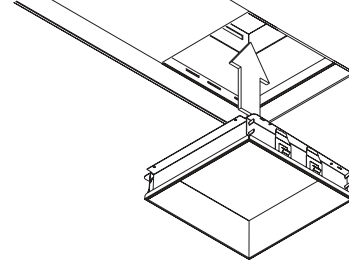
6 installation



fix chassis to brackets with screws

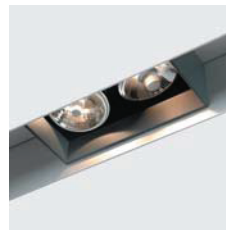


click the housing over the chassis



insert louvre in housing

7 installation



8 picture

kreon nv

Industrieweg Noord 1152
B 3660 Oplabbek
Belgium

Tel + 32 89 81 97 80
Fax + 32 89 81 97 90

www.kreon.com
mailbox@kreon.be

Rev. date : 09/01/2017
KR8850031399

pg 2/2