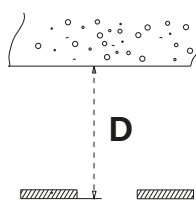
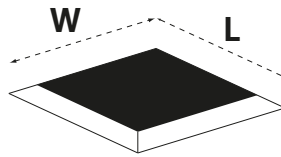


kreon

Technics

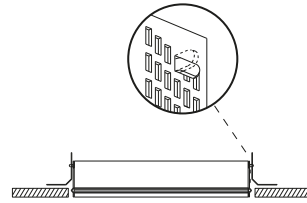
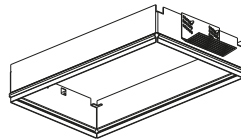


in case of installation with plasterkit

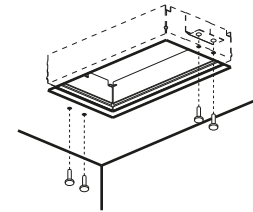


Name	Reference	plasterkit: L x W x D
Down-il 153 sgl qpar 30	kr918333	163x163x190
Down-il 153 sgl dir qt12/qr-lp111	kr918313, kr918323	163x163x165
Down-il153 sgl dir hit-tc/hipar	kr918383	163x163x200
Down-il 153 dble dir qt12/qr-lp111	kr928313, kr928323	273x163x165
Down-il 153 dbl dir hit-tc/hipar	kr928383	273x163x200
Down-il 153 double dir led ar111	KR928523	273x163x165
Down-il 153 triple dir qt12/qr-lp111	kr938313, kr938323, kr918363	406x163x165
Down-il 153 triple TC-L	kr918373	579x163x165

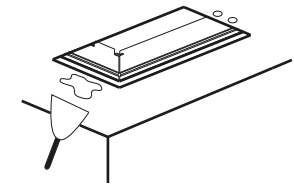
1 plasterkit



adjust brackets to correct ceiling thickness (min. 6mm - max. 28mm) and fold strips



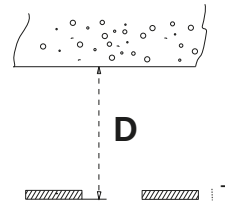
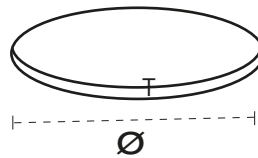
install plasterkit on the ceiling and fix it with plasterboard screws



plaster ceiling to hide screws and plaster kit

plasterkit

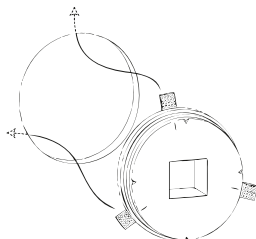
in case of installation with BA13



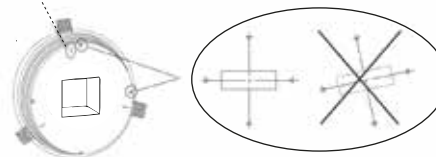
Name	Reference	Ø x D
Down-il 153 sgl qpar 30	kr918333	300x165
Down-il 153 sgl dir qt12/qr-lp111	kr918313, kr918323	300x165
Down-il153 sgl dir hit-tc/hipar	kr918383	300x200

2 plasterkit BA13

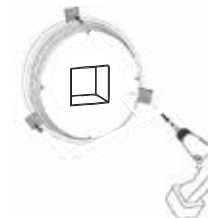
T= ceiling thickness = 12,5-13mm!



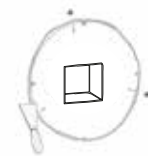
3 marks for screwing



adjust V-marks for the alignment



install plasterkit on the ceiling and fix it with screws



plaster ceiling to hide screws

Kreon nv

Industrieweg Noord 1152
3660 Opglabbeek
Belgium

Tel +32 89 81 97 80

www.kreon.com
mailbox@kreon.be

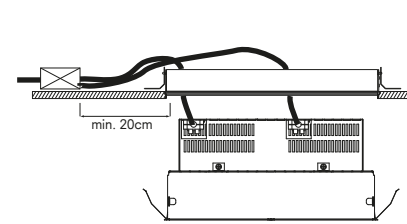
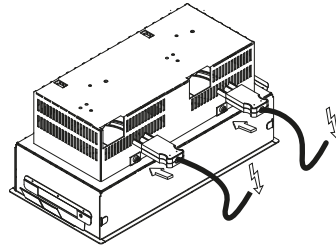
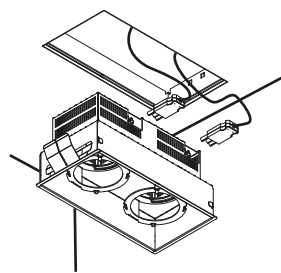
revision date 21/02/2018
KR8000001471

Sheet 1/4

Please make sure the main voltage is disconnected before proceeding! ⚡

Name	Reference	Voltage ⚡	Wattage
Down-il 153 sgl qpar 30	kr918333	230V	
Down-il 153 sgl dir qt12/qr-lp111	kr918313, kr918323	12V	
Down-il153 sgl dir hit-tc/hipar	kr918383	230V/5kV	
Down-il 153 dble dir qt12/qr-lp111	kr928313, kr928323	12V	
Down-il 153 dbl dir hit-tc/hipar	kr928383	230V/5kV	
Down-il 153 double dir led ar111*	kr928523		max. 2x20W
Down-il 153 tpl dir qt12/qr-lp111	kr938313, kr938323	12V	
Down-il 153 triple TC-L	kr918373, kr918363	230V	

3 electric connection



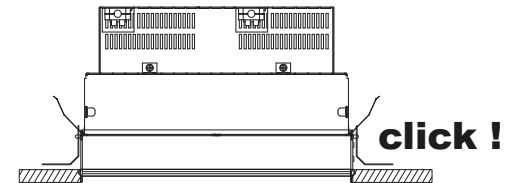
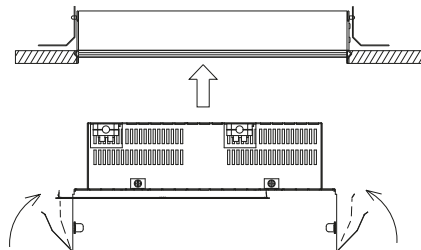
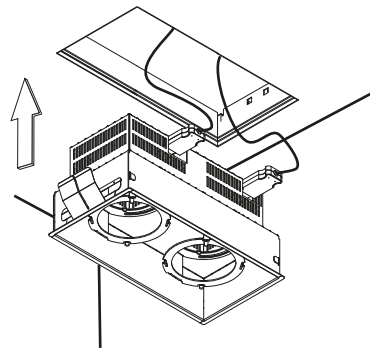
* in case of led AR111 each lamp is provided with a separate connector
 ** number and type of connectors may vary from drawing

electric connection

connect the appliance

make connection with provided connector**, use correct voltage

install correct gear (in case of fixtures gear exclusive) with strain relief on hollow ceiling



4 installation

mount the fixture in the plasterkit

fold the springs inward

Kreon nv

Industrieweg Noord 1152
 3660 Opglabbeek
 Belgium

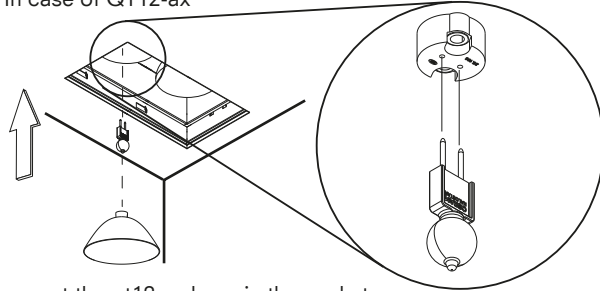
Tel +32 89 81 97 80

www.kreon.com
 mailbox@kreon.be

revision date 21/02/2018
 KR8000001471

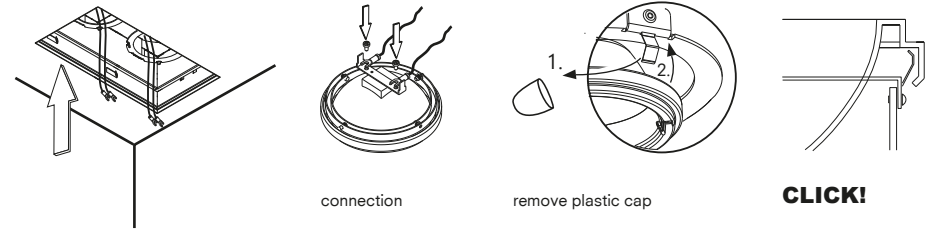
Sheet 2/4

In case of QT12-ax



mount the qt12-ax lamp in the socket and click the reflector into the reflector holder

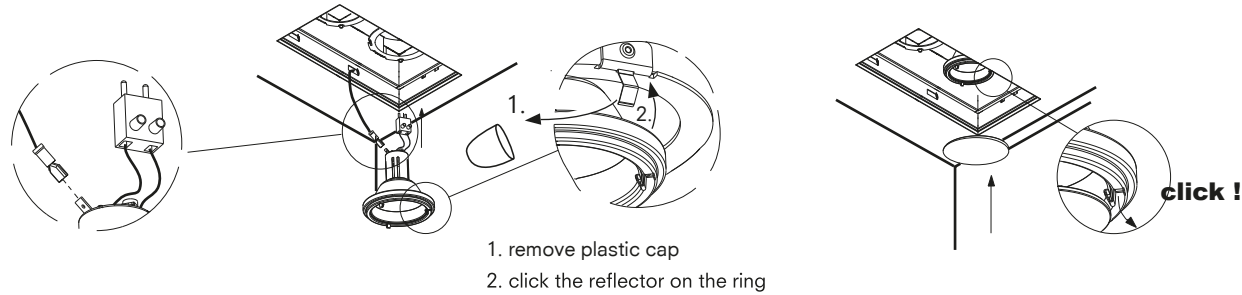
In case of QR-LP111 or LED AR111



connect the lamps with the wires coming from the fixture
click the lamp into the holder remove the plastic caps on the holder first

installation

In case of HIT-Tc with reflector



1. remove plastic cap
2. click the reflector on the ring

Name	Reference
HIT-Tc reflector 15°	kr700583
HIT-Tc reflector 30°	kr700585
HIT-Tc reflector 55°	kr700587

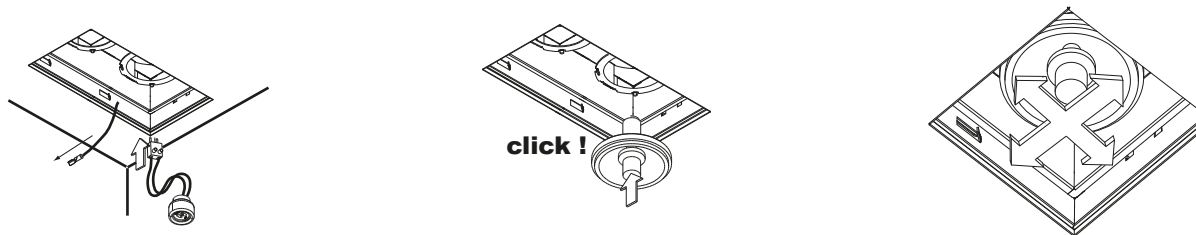
make earth-connection and connect the connector

insert lamp and install glass on reflector

note: to avoid scratches, do not turn bracket while replacing lamp

installation

In case of HIR-CE111 with reflector



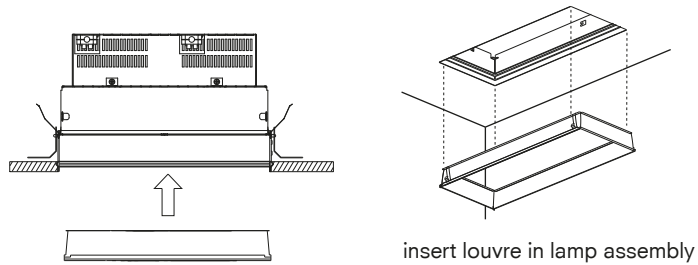
Name	Reference
HIR-CE111	kr700580

remove earthingwire from connector connect the connector of the socket

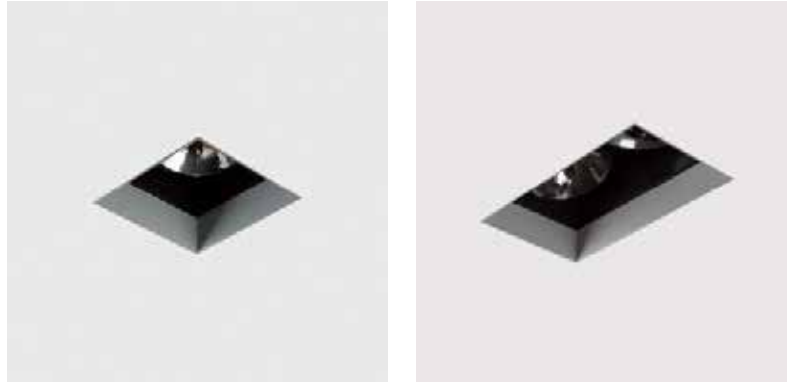
insert the lamp in the socket and push the lamp on the directional set

aim the lamp

installation



5 louvre



6 pictures